



# FAIRCROFT SLOUGH, SL2 1HJ

\*\*\* 3 BEDROOM MAISONETTE WITH 3 CAR  
DRIVEWAY \*\*\*

**£365,000**



1

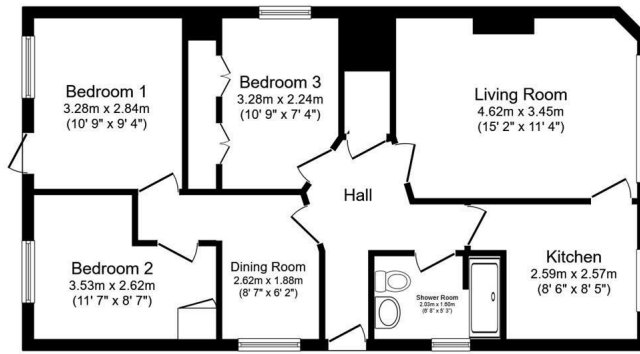


1

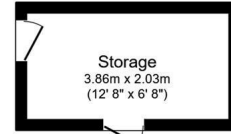


3

**EPC D**



**Floor Plan**  
Floor area 70.8 sq.m. (762 sq.ft.)



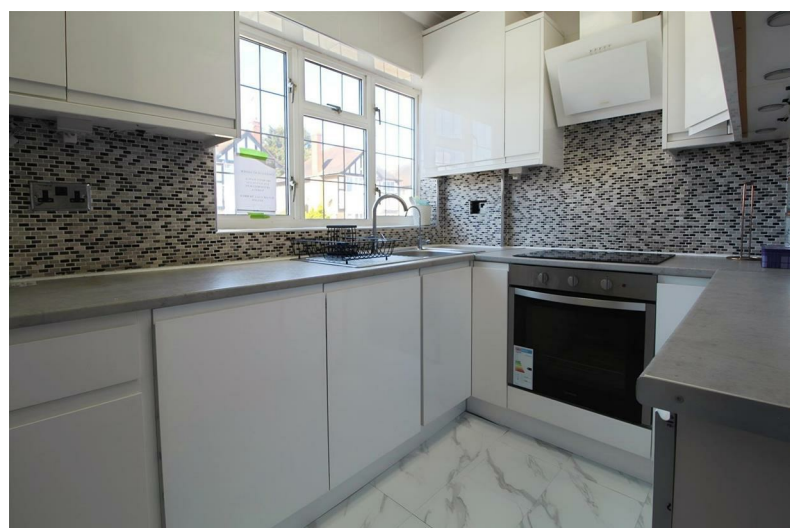
**Outbuilding**  
Floor area 7.8 sq.m. (84 sq.ft.)

Total floor area: 78.6 sq.m. (846 sq.ft.)

This floor plan is for illustrative purposes only. It is not drawn to scale. Any measurements, floor areas (including any total floor area), openings and orientations are approximate. No details are guaranteed, they cannot be relied upon for any purpose and do not form any part of any agreement. No liability is taken for any error, omission or misstatement. A party must rely upon its own inspection(s). Powered by www.Propertybox.io

Situated in this popular residential area within good proximity of Slough and local amenities, is this spacious ground floor maisonette. The entrance hall gives access to all living accommodation which comprises of two double bedrooms, a light and airy spacious sitting/dining room, modern bathroom and fitted kitchen. There is a generous sized private rear garden which has access to the side annex. Comes with 3 car driveway and would be an ideal investment or first time purchase.

- Individual 3 bedroom
- Garden and ample Parking
- Freehold
- Close to local shops
- Enclosed Garden
- Deceptively spacious
- Cul-de-sac location



**cameron  
king**  
ESTATE AGENTS

411 Bath Road, Slough, SL1 5QL  
t: 01628 667442  
e: sales@cameronking.co.uk



**rightmove**

**Zoopla**

**PrimeLocation.com**