



THE NORMANS SLOUGH, SL2 5TU

We are delighted to present to you this semi-detached property available for let. The property is in good condition, ready to welcome its new occupants. It's an ideal choice for families or couples, providing ample space and comfort.

£1,750 PCM



1



1



2

EPC D

cameron

ESTATE AGENTS

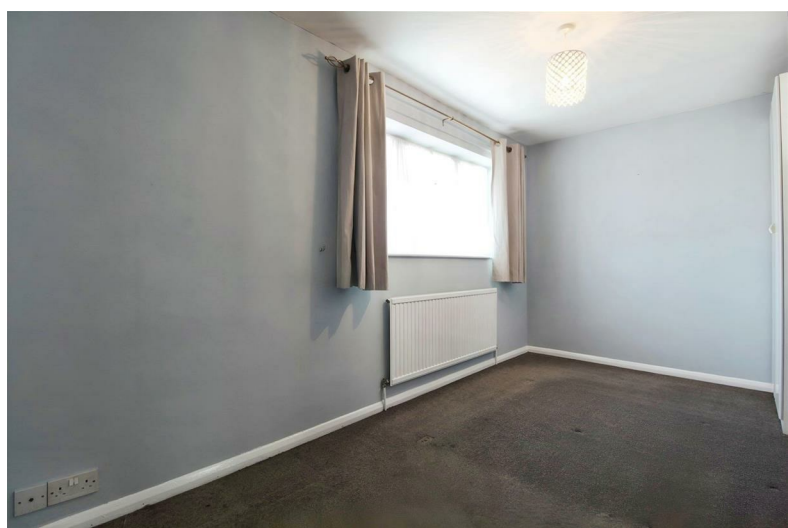
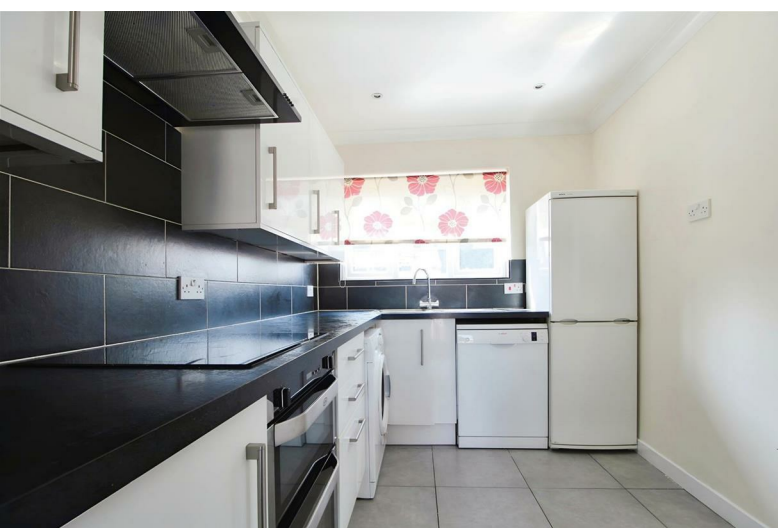
This residence boasts two generously proportioned double bedrooms, offering a tranquil space for relaxation and rest. The bedrooms are well-maintained and provide the perfect haven after a long day.

The heart of this home is the kitchen, which benefits from an abundance of natural light. It is a well-equipped space. The kitchen has been maintained to a high standard and will surely be a delight for those with a passion for cooking.

Additionally, the property has a reception room, a vibrant space ideal for entertaining guests or enjoying a quiet evening in. It's a versatile space that can be tailored to fit your needs. Repainted throughout.

It comes with driveway parking and a garage to the side. As well as a spacious garden with a brick outbuilding.

- Within a 2 minute walk to local amenities
- Easy access to Wexham Park Hospital
- Schools around the vicinity
- Links to public transport
- Unfurnished property
- Sought after area for families



411 Bath Road, Slough, SL1 5QL
t: 01628 667442
e: sales@cameronking.co.uk

