



# WYETH CLOSE

## MAIDENHEAD, SL6 0XW

**£650,000**

This beautifully presented end of terrace property, with potential for further development (STPP), is an excellent choice for families seeking a tranquil location within a vibrant community, offering extensive access to public transportation and nearby schools.

The property has been extended to the side, featuring three spacious open-plan reception rooms with composite floors. These rooms provide access to a patio area and a rear garden, with one offering a lovely garden view and the other enhancing the




---


 **4**
 **2**

 **4**
**EPC C**

---

connection to the outdoors.

The modern kitchen is equipped with high-quality appliances and elegant granite countertops, making it an ideal space for cooking and entertaining.

With four bedrooms, there is ample space for the entire family. The master bedroom is a large double bedroom with an en-suite bathroom and built in wardrobes. The second bedroom is also a double bedroom with fitted wardrobes, perfect for guests or children. The third bedroom is a double bedroom with an en-suite whilst the fourth bedroom is a single bedroom, suitable for a child's room or a home office.

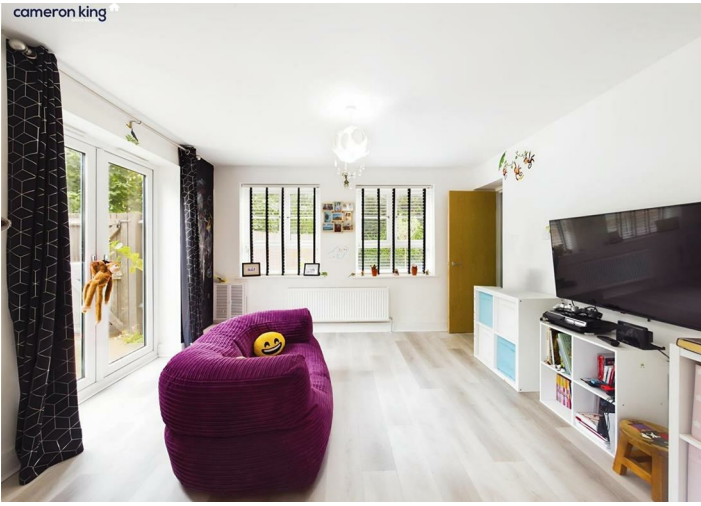
The family bathroom includes a bath, toilet, and washbasin. Additionally, there is an upstairs pool room that can serve various purposes and could be repurposed as an additional double bedroom if required. From the pool room there are bi-fold doors leading to a relaxing roof terrace with a spiral staircase down to the patio. The rear garden is mainly laid to lawn and provides gated access to the front of the property, where two parking spaces are allocated.

- OPEN DAY - SATURDAY 30th SEPTEMBER 2023
- EXTENDED BUT OPTION TO FURTHER DEVELOPMENT (STPP)
- EASY ACCESS TO M4 MOTORWAY (JUNCTION 7)
- SOLAR PANELS
- LOCATED 1.1 MILES FROM BURNHAM RAIL STATION (PART OF ELIZABETH LINE NETWORK)
- ALLOCATED RESIDENTS PARKING
- CLOSE TO THE JUBILEE RIVER AND DORNEY LAKE
- WITHIN SHORT WALK OF BURNHAM GRAMMAR AND OTHER EXCELLENT SCHOOLS

## Directions



cameron king



cameron king



cameron king



cameron king



cameron king



cameron king

