

**Abbey Road Abbey Hulton Stoke-On-Trent ST2 8AZ**



**Offers In Excess Of £65,000**



## Abbey Road, Abbey Hulton, Stoke-On-Trent, ST2 8AZ

A first-floor flat, so close to the ground,  
Where city noises are softly found.  
The world outside, just a step away,  
But inside, calm in the light of day.  
A little haven, a quiet retreat  
With cozy corners and a peaceful beat.  
Above the street, but not too high,  
A first-floor flat beneath the sky.  
So if you think this sounds ideal for you  
Waste not a moment longer, you know what you need to do!

Located on Abbey Road in Abbey Hulton this first-floor flat presents an excellent opportunity for those seeking a convenient and comfortable living space. The property features a welcoming entrance lobby that leads to a staircase, guiding you to the first floor where you will find a well-proportioned landing. The flat comprises a spacious lounge, perfect for relaxation or entertaining guests, alongside a functional kitchen that awaits your personal touch. With two inviting bedrooms, this home is ideal for small families, couples, or individuals looking for extra space. The bathroom is conveniently located, ensuring ease of access for all residents.

One of the standout features of this property is the rear garden, providing a delightful outdoor space for gardening enthusiasts or those who simply wish to enjoy some fresh air. Additionally, the flat is offered with no upward chain, allowing for a smooth and straightforward purchasing process. While the property does require some modernisation, this presents a wonderful opportunity for buyers to customise the space to their own tastes and preferences. With its prime location and potential for enhancement, this flat is a promising prospect for anyone looking to invest in a home in Stoke-On-Trent.

### Entrance Lobby

Upvc door to the front aspect.

### Landing

Double glazed window to the side aspect.

### Lounge

13'7" x 12'3" (4.16 x 3.75)

Double glazed window to the front aspect. Wall mounted fire. Radiator.



### Kitchen

9'10" x 7'6" (3.02 x 2.30)

Double glazed window. Wall mounted unit and fitted shelves. Stainless steel sink with single drainer. Part tiled splash backs. Space for cooker. Plumbing for automatic washing machine. Airing cupboard.

### Bedroom One

11'1" x 9'11" (3.40 x 3.03)

Double glazed window. Radiator.



### Bedroom Two

10'0" x 8'6" (3.06 x 2.61)

Double glazed window. Radiator. Built-in storage cupboard.





### Bathroom

9'10" x 5'0" (3.01 x 1.54)

Suite comprising, panelled bath with shower attachment, pedestal wash hand basin and low level WC. Radiator. Double glazed window.



### Externally

Rear garden.

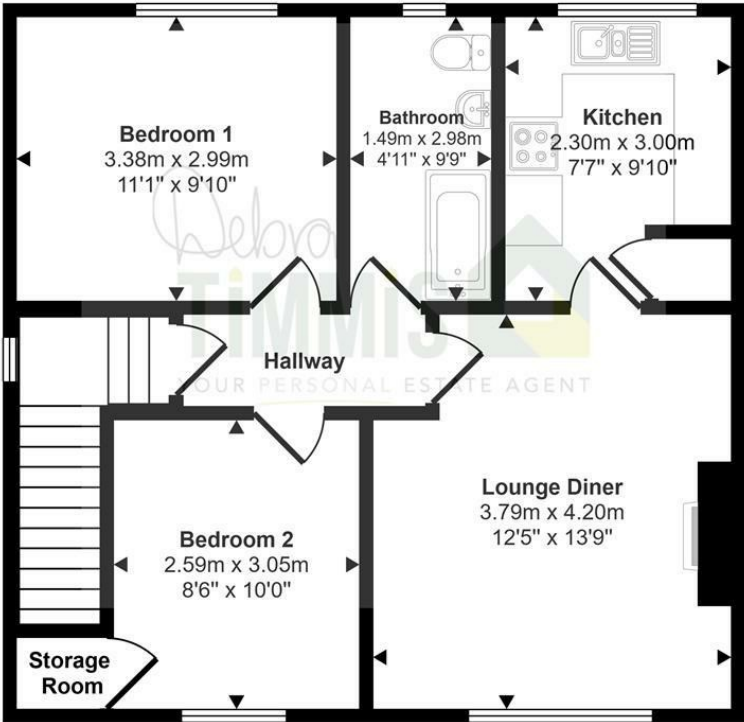
### Agents Notes

We understand that this property is Leasehold, 125 years from 1995. Ground Rent £10.00 PA and service charge £115.00 PA. Please note any interested parties are advised to make their own enquires as this information could be subject to change.





Approx Gross Internal Area  
55 sq m / 587 sq ft



First Floor

This floorplan is only for illustrative purposes and is not to scale. Measurements of rooms, doors, windows, and any items are approximate and no responsibility is taken for any error, omission or mis-statement. Icons of items such as bathroom suites are representations only and may not look like the real items. Made with Made Snappy 360.



Tenure: Leasehold  
Council Tax Band: A

Energy Efficiency Rating		
	Current	Potential
Very energy efficient - lower running costs		
(92 plus) A		
(81-91) B		
(69-80) C		
(55-68) D		
(39-54) E		
(21-38) F		
(1-20) G		
Not energy efficient - higher running costs		
	62	75
England & Wales		EU Directive 2002/91/EC

Debra Timmis Estate Agents for themselves and for the vendors or lessors of this property whose agents they are give notice that (i) the particulars are set out as a general outline only for the guidance of intending purchasers or lessees, and do not constitute, nor constitute part of an offer or contract; (ii) all descriptions, dimensions, references to condition and necessary permissions for use and occupation, and other details are given without responsibility and intending purchasers or tenants should not rely on them as statements or representations of fact but must satisfy themselves by inspection or otherwise as to the correctness of each of them; (iii) no person in the employment of Debra Timmis Estate Agents has any authority to make or give any representation or warranty whatsoever in relation to this property.