

Queens Terrace Northwood Stoke-On-Trent ST1 2AH



Offers In The Region Of £160,000

Queens Terrace, Northwood, Stoke-On-Trent, ST1 2AH

If PERFECTION is what you are searching for then look no more -

This gorgeous property is a gem that you'll definitely adore!

Beautiful and immaculate all the way through - There's certainly nothing here for you to do!

With a stunning lounge and stylish kitchen/diner -

As well as THREE BEDROOMS and STYLISH bathroom -

Outside offers space for numerous cars and beautiful garden to enjoy by night or day

So if this sound like the perfect house for you - Call DEBRA TIMMIS and arrange to view!

This IMMACULATE end town house in Queens Terrace is perfect for a first time buyer or couples as it offers a spacious lounge and STUNNING kitchen/diner. On the first floor there are THREE BEDROOMS and a family sized bathroom. Outside boasts a low maintenance frontage providing ample off road parking. Landscaped rear garden with patio/seating areas and flower beds. Useful workshop. Set in a popular location with views over Northwood stadium at the rear. Close to local amenities and commuter links. Early internal inspection highly recommended.

Entrance Hall

Upvc door and double glazed windows to the front aspect. Wood flooring. Stairs off to the first floor. Inset ceiling spot lights. Useful storage cupboard with double glazed window.

Lounge

13'6" max 10'4" (4.14 max 3.15)

Double glazed box window to the first floor. Inset spot light and ceiling light. Feature surround inset and hearth housing electric fire. Double door with access into the open-plan kitchen/diner. Wood flooring.



Open-Plan Kitchen/Diner

16'7" max x 12'3" (5.06 max x 3.75)

Dining Area

With double glazed patio door with access into the rear garden. Inset ceiling spot lights. Wood flooring.

Kitchen Area

Beautifully presented fitted kitchen with a range of wall mounted units, worktops incorporating drawers and cupboards below. Neff appliances include, four ring gas hob and built-in oven, Extractor hood. One and a half bowl stainless steel single drainer sink unit, mixer tap. Part tiled splash backs. Inset ceiling spot lights. Double glazed window to the side aspect. Wood flooring. Access to the utility recess.

Utility Recess

6'5" x 4'6" (1.98 x 1.38)

With wall mounted Worcester gas central heating boiler. Plumbing for automatic washing machine and dishwasher. Rear door access.

First Floor

Landing

Double glazed window to the side aspect.

Bedroom One

12'4" x 10'4" (3.76 x 3.17)

Double glazed window to the rear aspect with views over looking Northwood stadium. Radiator.



Bedroom Two

11'0" x 10'2" (3.37 x 3.12)

Double glazed window to the front aspect. Radiator.



Externally

Low maintenance frontage providing ample off road parking. Side entry with access into the enclosed rear garden. Low maintenance rear garden with patio/seating areas.

Bedroom Three

7'5" x 6'0" (2.27 x 1.83)

Double glazed window to the front aspect. Radiator. Loft access.

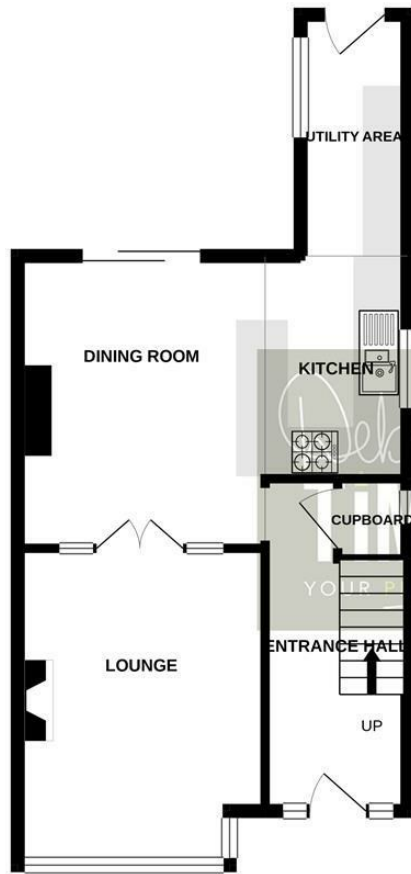
Bathroom

7'8" x 6'0" (2.35 x 1.83)

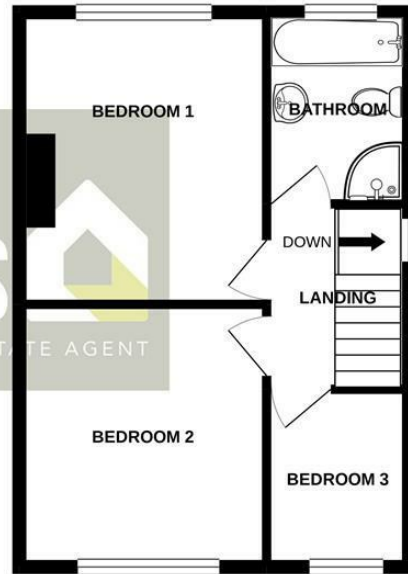
White suite comprises, panelled bath with shower mixer, corner shower cubicle housing Triton shower unit, pedestal wash hand basin and low level WC. Part tiled walls. Radiator. Double glazed window to the rear aspect.



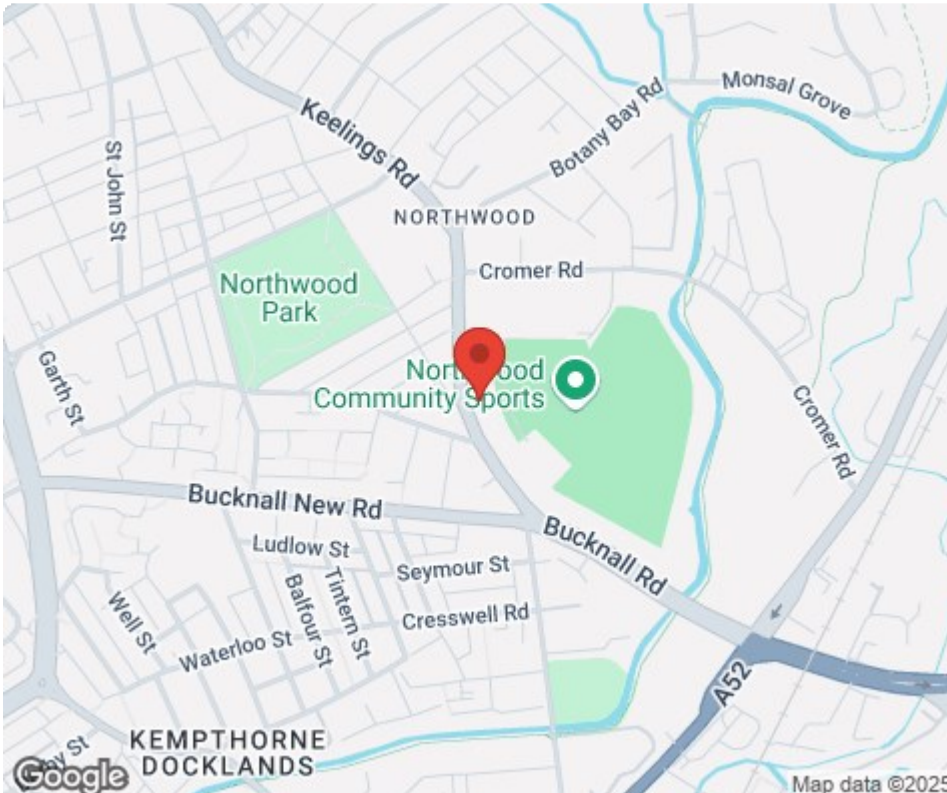
GROUND FLOOR



1ST FLOOR



Whilst every attempt has been made to ensure the accuracy of the floorplan contained here, measurements of doors, windows, rooms and any other items are approximate and no responsibility is taken for any error, omission or mis-statement. This plan is for illustrative purposes only and should be used as such by any prospective purchaser. The services, systems and appliances shown have not been tested and no guarantee as to their operability or efficiency can be given.
Made with Metropix ©2021



Tenure: Freehold
Council Tax Band: A

Energy Efficiency Rating		
	Current	Potential
Very energy efficient - lower running costs		
(92 plus) A		
(81-91) B		82
(69-80) C	65	
(55-68) D		
(39-54) E		
(21-38) F		
(1-20) G		
Not energy efficient - higher running costs		
England & Wales		EU Directive 2002/91/EC

Debra Timmis Estate Agents for themselves and for the vendors or lessors of this property whose agents they are give notice that (i) the particulars are set out as a general outline only for the guidance of intending purchasers or lessees, and do not constitute, nor constitute part of an offer or contract; (ii) all descriptions, dimensions, references to condition and necessary permissions for use and occupation, and other details are given without responsibility and intending purchasers or tenants should not rely on them as statements or representations of fact but must satisfy themselves by inspection or otherwise as to the correctness of each of them; (iii) no person in the employment of Debra Timmis Estate Agents has any authority to make or give any representation or warranty whatsoever in relation to this property.