

**Norton Street Milton Stoke-On-Trent ST2 7BT**



**Offers In Excess Of £225,000**

## Norton Street, Milton, Stoke-On-Trent, ST2 7BT

Looking for your next home and a BUNGALOW it must be  
Then this EXTENDED SEMI DETACHED BUNGALOW you must see  
DRIVEWAY, GARAGE and an enclosed garden to the back  
SPACIOUS ACCOMMODATION this bungalow does not lack  
Beautifully presented and modernised all through  
There's no need to lift a finger, it's ready to move straight in to  
If a property in MILTON is what you're searching for  
Then look no further, give Debra Timmis a call.

A great opportunity has arisen for you to become the proud new owner of this wonderful extended semi detached bungalow in the popular location in Milton. This beautifully presented property is sure to attract a lot of interest. Internally it offers a spacious hallway, spacious lounge, dining area as well as a fitted kitchen with integrated appliances. It also boasts three good sized bedrooms and a stylish bathroom. Outside, the property benefits from gardens at the front and rear, plus a driveway and a good sized garage. Perfectly located within walking distance to Milton Village. Do not miss out on the chance to make this property your new home.

### Entrance Hall

Double glazed Upvc to the side with double glazed windows. Tiled floor. Radiator. Useful storage cupboard. Coving to ceiling.

### Kitchen

9'4" x 8'8" (2.85 x 2.66)

Beautifully presented fitted kitchen with a range of wall mounted units, worktops incorporating drawers and cupboards below. Integral fridge/freezer. Four ring gas hob and built-in oven. Plumbing for automatic washing machine. Stainless steel sink with single drainer, mixer tap. Part tiled splash backs. Tiled floor. Double glazed window to the front aspect. Inset ceiling spot lights.

### Lounge

16'3" x 11'2" (4.96 x 3.42)

Double glazed window to the front aspect. Feature surround. Radiator.



### Dining Area

11'2" x 6'7" (3.41 x 2.03)

Sky light. Radiator. Tiled floor.

### Bathroom

6'4" x 5'4" (1.95 x 1.65)

Modern suite comprises, panel bath with shower over and shower attachment, pedestal wash hand basin and low level WC. Heated towel rail. Tiled walls and tiled floor. Double glazed window.

### Inner Hallway

### Bedroom One

10'6" x 9'5" (3.22 x 2.88)

Double glazed French doors with access into the rear garden. Radiator. Walk-in wardrobe with light.





### Garage

Good sized garage with up and over door. Power and light.

### Bedroom Two

10'11" into robe x 8'7" (3.35 into robe x 2.64)

Double glazed French doors with access into the rear garden. Radiator. Built-in wardrobes.

### Bedroom Three

10'11" x 8'10" (3.33 x 2.71)

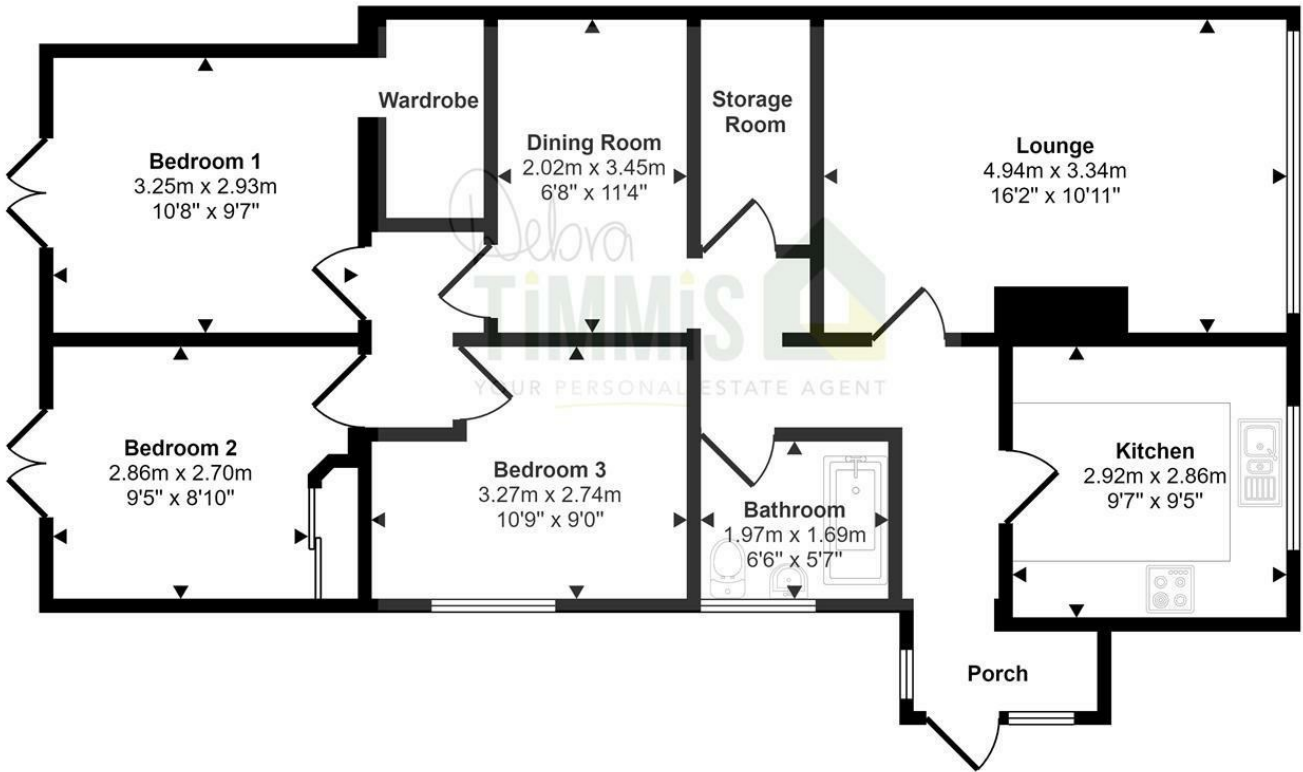
Double glazed window. Radiator.

### Externally

To the front aspect there is a low maintenance gravel garden. Block paved driveway providing ample off road parking. Access to the garage. To the rear aspect there is a lawn garden with decked patio seating area.



Approx Gross Internal Area  
83 sq m / 891 sq ft



Floorplan

This floorplan is only for illustrative purposes and is not to scale. Measurements of rooms, doors, windows, and any items are approximate and no responsibility is taken for any error, omission or mis-statement. Icons of items such as bathroom suites are representations only and may not look like the real items. Made with Made Snappy 360.



Tenure: Freehold  
Council Tax Band: C

Energy Efficiency Rating		Current	Potential
Very energy efficient - lower running costs			
(92 plus) <b>A</b>			
(81-91) <b>B</b>			<b>84</b>
(69-80) <b>C</b>		<b>63</b>	
(55-68) <b>D</b>			
(39-54) <b>E</b>			
(21-38) <b>F</b>			
(1-20) <b>G</b>			
Not energy efficient - higher running costs			
<b>England &amp; Wales</b>		EU Directive 2002/91/EC	

Debra Timmis Estate Agents for themselves and for the vendors or lessors of this property whose agents they are give notice that (i) the particulars are set out as a general outline only for the guidance of intending purchasers or lessees, and do not constitute, nor constitute part of an offer or contract; (ii) all descriptions, dimensions, references to condition and necessary permissions for use and occupation, and other details are given without responsibility and intending purchasers or tenants should not rely on them as statements or representations of fact but must satisfy themselves by inspection or otherwise as to the correctness of each of them; (iii) no person in the employment of Debra Timmis Estate Agents has any authority to make or give any representation or warranty whatsoever in relation to this property.