



0/1

North Woodside Road | | Glasgow | G20 6LW

Offers over £125,000

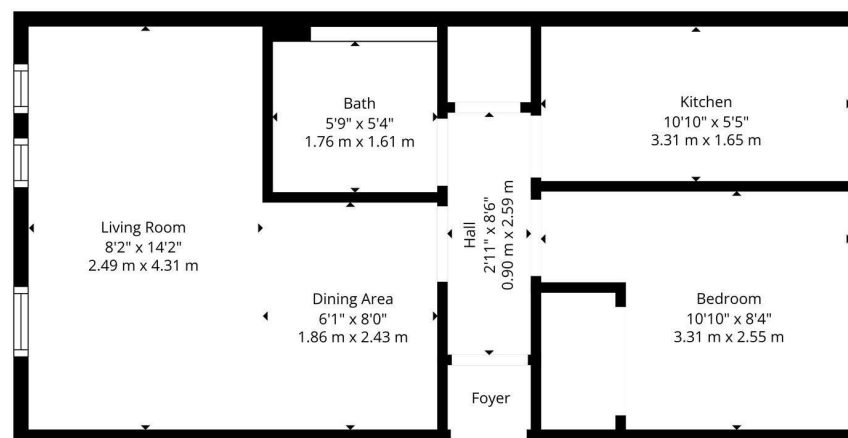
pattison & co



# 0/1

North Woodside Road |  
Glasgow | G20 6LW  
Offers over £125,000

Nestled in the sought-after area of Woodside in Glasgow's West End, this charming one-bedroom ground floor flat offers a delightful living experience. The property boasts a spacious living room that seamlessly combines both relaxation and dining areas, making it perfect for entertaining guests or enjoying quiet evenings at home.



pattison&co

TOTAL: 407 sq. ft, 38 m2  
1st floor: 407 sq. ft, 38 m2  
EXCLUDED AREAS: WALLS: 44 sq. ft, 4 m2  
Floorplan Created By Proscopius Media. Measurements Deemed Highly Reliable But Not Guaranteed.



Energy Efficiency Rating		
	Current	Potential
Very energy efficient - lower running costs		
(92 plus) A		
(81-91) B		
(69-80) C		
(55-68) D	64	75
(39-54) E		
(21-38) F		
(1-20) G		
Not energy efficient - higher running costs		
Scotland	EU Directive 2002/91/EC	

103 Byres Road  
Glasgow  
G11 5HW  
0141 334 7706

melanie.paterson@pattisonandcompany.com  
<http://www.pattisonandcompany.com>