



Kilmarnock Road | | Glasgow | G43 1TX

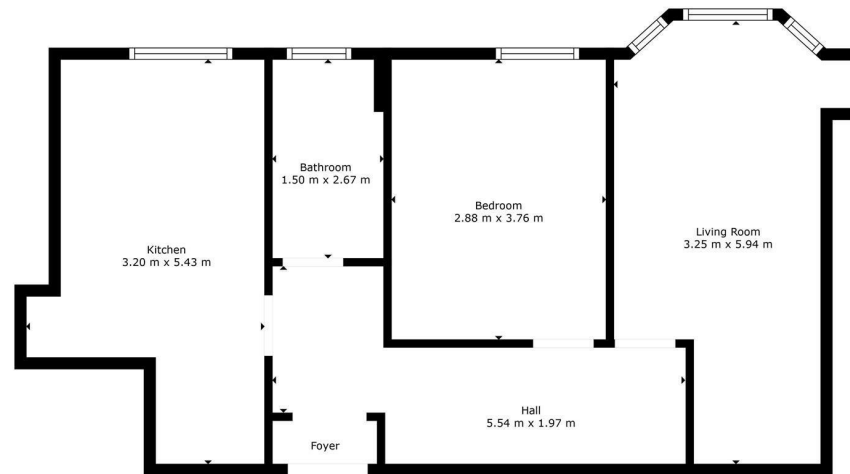
Offers over £160,000

pattison&co

Kilmarnock Road |
Glasgow | G43 1TX
Offers over £160,000

Nestled in the vibrant heart of Shawlands, this charming one-bedroom flat on Kilmarnock Road offers a delightful blend of traditional character and modern convenience.

- Spacious 1 bed flat
- Bright bay window living room
- Shared well-kept garden
- Near restaurants and attractions
- Secure communal entry
- Modern kitchen with breakfast bar
- Close to transport links



pattison&co

Total: 63 m²

Floorplan Created By Procapture Media. Measurements Deemed Highly Reliable But Not Guaranteed.



| Energy Efficiency Rating | | |
|---|-------------------------|-----------|
| | Current | Potential |
| Very energy efficient - lower running costs | | |
| (92 plus) A | | |
| (81-91) B | | |
| (69-80) C | 74 | 80 |
| (55-68) D | | |
| (39-54) E | | |
| (21-38) F | | |
| (1-20) G | | |
| Not energy efficient - higher running costs | | |
| Scotland | EU Directive 2002/91/EC | |

103 Byres Road
Glasgow
G11 5HW
0141 334 7706

melanie.paterson@pattisonandcompany.com
<http://www.pattisonandcompany.com>