



## 16 MARTLET CLOSE

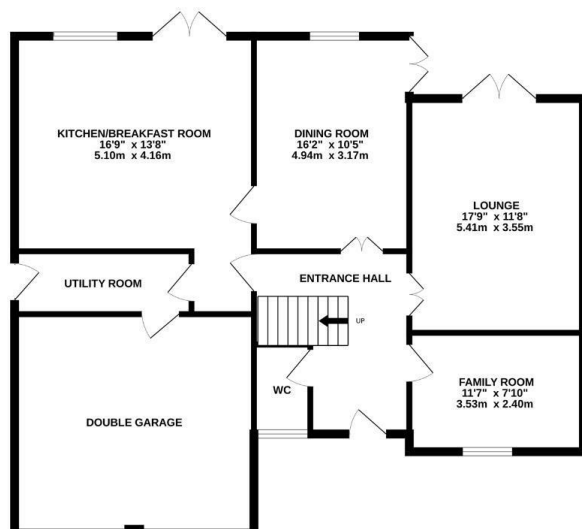
NORTHAMPTON, NN4 6EX

**£685,000**  
**FREEHOLD**

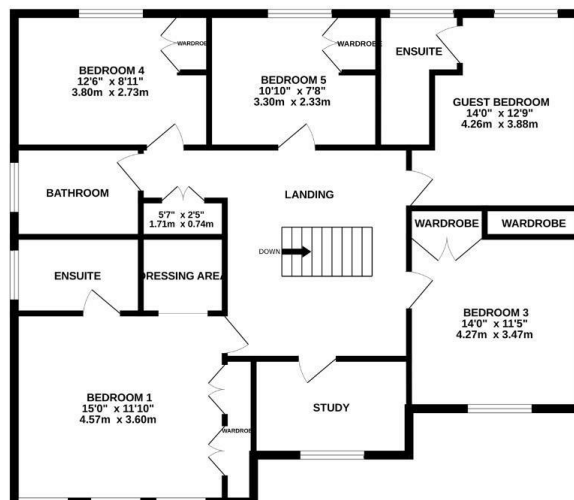
Stonhills are pleased to offer this well presented five double bedroom detached house which is located in this quiet cul de sac with good access to local schools and the M1. The accommodation comprises: Entrance hall, lounge, dining room, kitchen/breakfast room, family room, wc, bedroom one with dressing area and ensuite, bedroom two with ensuite, three further bedrooms, bathroom, rear garden, off road parking leading to double garage.



GROUND FLOOR

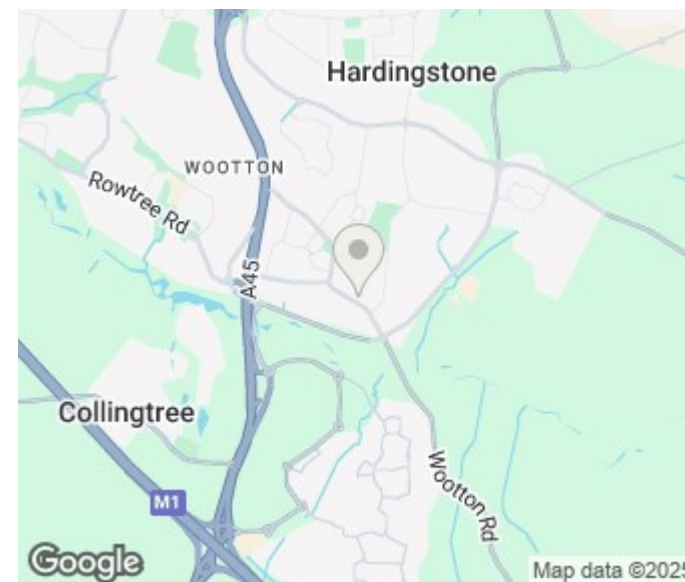


1ST FLOOR



Whilst every attempt has been made to ensure the accuracy of the floorplan contained here, measurements of doors, windows, rooms and any other items are approximate and no responsibility is taken for any error, omission or mis-statement. This plan is for illustrative purposes only and should be used as such by any prospective purchaser. The services, systems and appliances shown have not been tested and no guarantee as to their operability or efficiency can be given.

Made with Metropix ©2024



Energy Efficiency Rating		
	Current	Potential
Very energy efficient - lower running costs		
(92 plus) <b>A</b>		
(81-91) <b>B</b>		
(69-80) <b>C</b>		
(55-68) <b>D</b>		
(39-54) <b>E</b>		
(21-38) <b>F</b>		
(1-20) <b>G</b>		
Not energy efficient - higher running costs		
<b>England &amp; Wales</b>	EU Directive 2002/91/EC	

Agents Note: Whilst every care has been taken to prepare these particulars, they are for guidance purposes only. All measurements are approximate and are for general guidance purposes only and whilst every care has been taken to ensure their accuracy, they should not be relied upon and potential buyers/tenants are advised to recheck the measurements

Northampton Office Sales  
39 St Giles Street  
Northampton  
Northamptonshire  
NN1 1JF

01604 624424  
lewis@stonhills.co.uk  
<https://www.stonhills.co.uk/>

