



PLOT 12 PINES CLOSE

NORTHAMPTON, NN2 8LS

£350,000
FREEHOLD

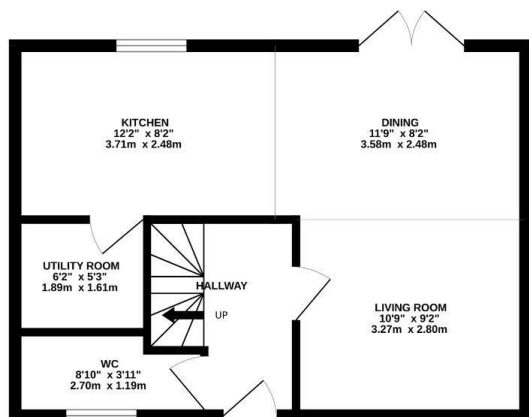
Stonhills are pleased to offer this modern three-bedroom detached home, set in a private development of just 14 houses behind electric gates. The property features open-plan living, en suite to the main bedroom, downstairs WC, rear garden, and off-road parking.

Located in the sought-after area of Kingsthorpe, close to local amenities, schools, and transport links

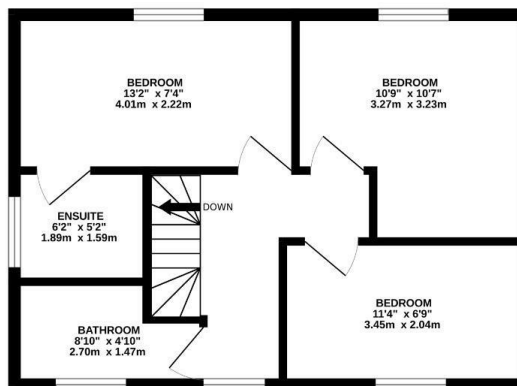


LAND & ESTATE AGENTS

GROUND FLOOR



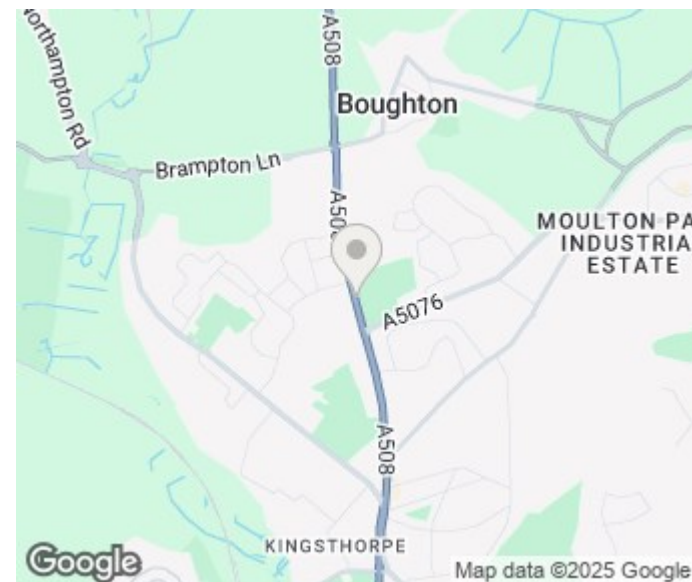
1ST FLOOR



PLOT 9

Whilst every attempt has been made to ensure the accuracy of the floorplan contained here, measurements of doors, windows, rooms and any other items are approximate and no responsibility is taken for any error, omission or mis-statement. This plan is for illustrative purposes only and should be used as such by any prospective purchaser. The services, systems and appliances shown have not been tested and no guarantee as to their operability or efficiency can be given.

Made with Metropix ©2023



Energy Efficiency Rating		
	Current	Potential
Very energy efficient - lower running costs		
(92 plus) A		
(81-91) B		
(69-80) C		
(55-68) D		
(39-54) E		
(21-38) F		
(1-20) G		
Not energy efficient - higher running costs		
England & Wales	EU Directive 2002/91/EC	

Agents Note: Whilst every care has been taken to prepare these particulars, they are for guidance purposes only. All measurements are approximate and are for general guidance purposes only and whilst every care has been taken to ensure their accuracy, they should not be relied upon and potential buyers/tenants are advised to recheck the measurements

Northampton Office Sales
39 St Giles Street
Northampton
Northamptonshire
NN1 1JF

01604 624424
lewis@stonhills.co.uk
<https://www.stonhills.co.uk/>

stonhills
LAND & ESTATE AGENTS