

1 SARGEANTS LANE

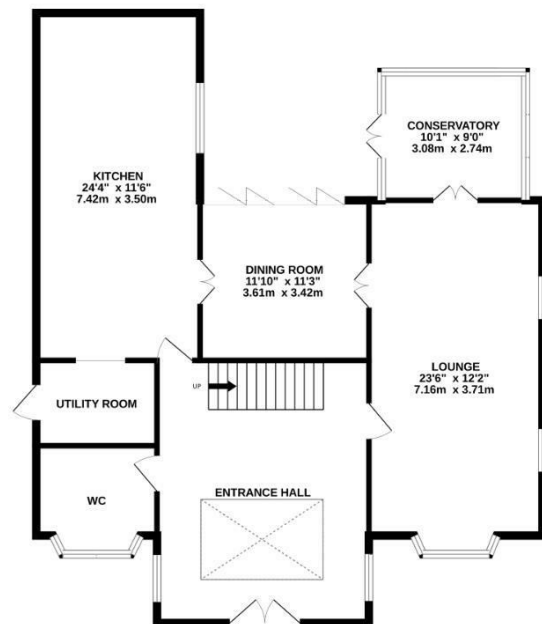
COLLINGTREE, NN4 0NT

£625,000
FREEHOLD

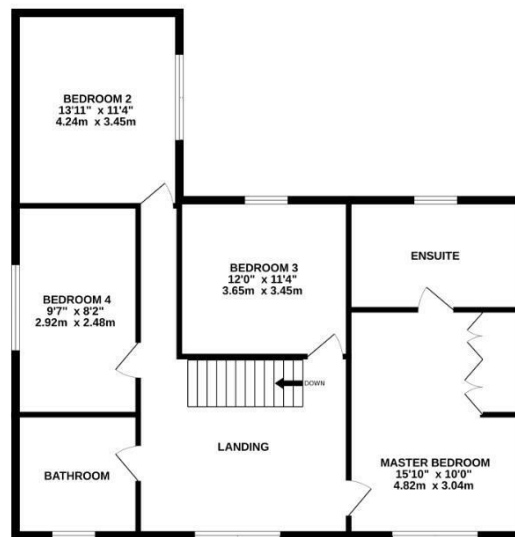
Stonhills are pleased to offer this well presented and extended four bedroom detached home, set in the sought-after village of Collingtree. The property features a large kitchen, dining room, lounge, conservatory, ensuite to bedroom one, private garden, off road parking and double garage. Located close to a well-regarded primary school, with excellent transport links to Northampton, the M1 and A45.



GROUND FLOOR
1180 sq.ft. (109.7 sq.m.) approx.



1ST FLOOR
985 sq.ft. (91.5 sq.m.) approx.



SARGEANTS LANE, COLLINGTREE

TOTAL FLOOR AREA: 2165 sq.ft. (201.1 sq.m.) approx.

Whilst every attempt has been made to ensure the accuracy of the floorplan contained here, measurements of doors, windows, rooms and any other items are approximate and no responsibility is taken for any error, omission or mis-statement. This plan is for illustrative purposes only and should be used as such by any prospective purchaser. The services, systems and appliances shown have not been tested and no guarantee as to their operability or efficiency can be given.
Made with Metropix ©2025



Energy Efficiency Rating		
	Current	Potential
Very energy efficient - lower running costs		
(92 plus) A		
(81-91) B		
(69-80) C		
(55-68) D		
(39-54) E		
(21-38) F		
(1-20) G		
Not energy efficient - higher running costs		
England & Wales	EU Directive 2002/91/EC	

Agents Note: Whilst every care has been taken to prepare these particulars, they are for guidance purposes only. All measurements are approximate and are for general guidance purposes only and whilst every care has been taken to ensure their accuracy, they should not be relied upon and potential buyers/tenants are advised to recheck the measurements

Northampton Office Sales
39 St Giles Street
Northampton
Northamptonshire
NN1 1JF

01604 624424
lewis@stonhills.co.uk
<https://www.stonhills.co.uk/>

 **stonhills**
LAND & ESTATE AGENTS