



PLOT 23 THORPEVILLE

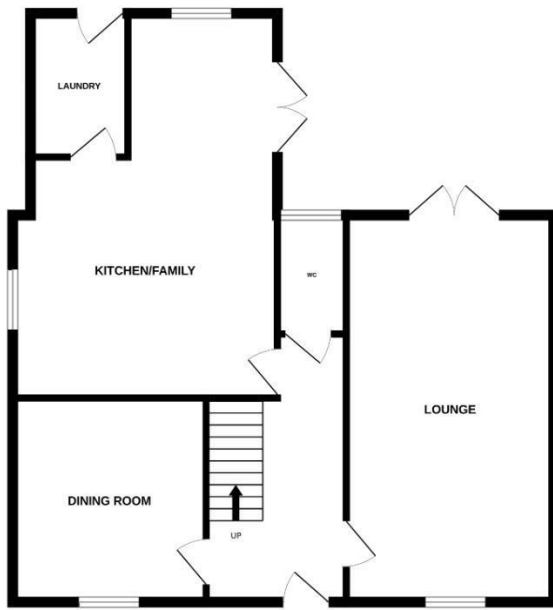
NORTHAMPTON, NN3 7TR

£585,000
FREEHOLD

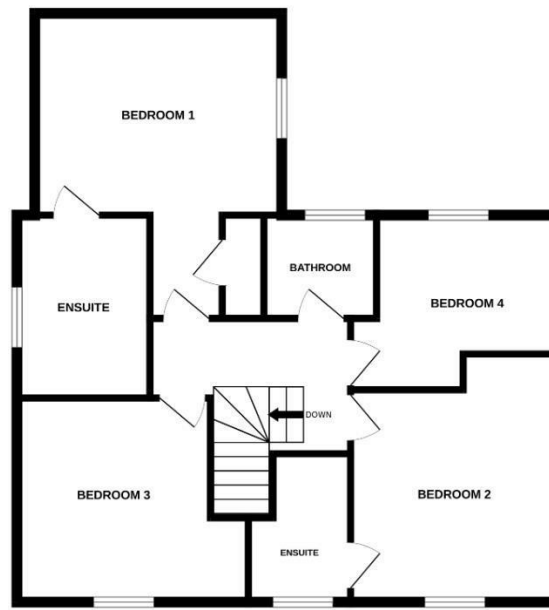
Stonhills are pleased to offer this stunning four bedroom detached house which is situated on a corner plot in this exclusive development of 14 houses which are set behind electric gates and is located in this popular village of Moulton. The accommodation comprises: hall, lounge, kitchen/breakfast room, utility room, dining room, wc, bedroom one with ensuite and dressing area, bedroom two with ensuite, two further bedrooms, bathroom, rear garden, off road parking leading to double garage. INCENTIVES AVAILABLE

 **stonhills**
LAND & ESTATE AGENTS

GROUND FLOOR



1ST FLOOR



Whilst every attempt has been made to ensure the accuracy of the floorplan contained here, measurements of doors, windows, rooms and any other items are approximate and no responsibility is taken for any error, omission or mis-statement. This plan is for illustrative purposes only and should be used as such by any prospective purchaser. The services, systems and appliances shown have not been tested and no guarantee as to their operability or efficiency can be given.
Made with Metropix ©2024



Energy Efficiency Rating		
	Current	Potential
Very energy efficient - lower running costs		
(92 plus) A		
(81-91) B		
(69-80) C		
(55-68) D		
(39-54) E		
(21-38) F		
(1-20) G		
Not energy efficient - higher running costs		
England & Wales	EU Directive 2002/91/EC	

Agents Note: Whilst every care has been taken to prepare these particulars, they are for guidance purposes only. All measurements are approximate and are for general guidance purposes only and whilst every care has been taken to ensure their accuracy, they should not be relied upon and potential buyers/tenants are advised to recheck the measurements

Northampton Office Sales
39 St Giles Street
Northampton
Northamptonshire
NN1 1JF

01604 624424
lewis@stonhills.co.uk
<https://www.stonhills.co.uk/>

 **stonhills**
LAND & ESTATE AGENTS