



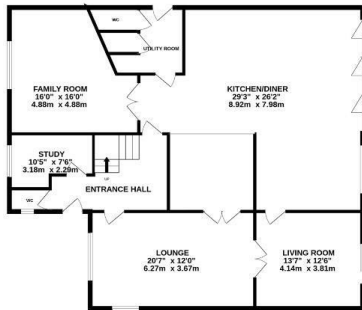
7 LAUREL VALLEY NORTHAMPTON, NN4 0YU

£1,425,000
FREEHOLD

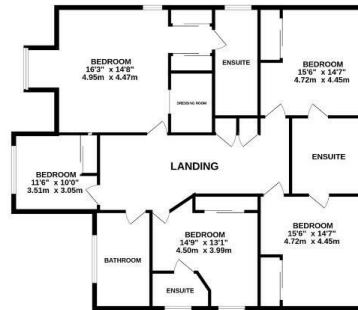
Stonhills are pleased to offer this stunning six double bedroom family home which has been extended and refurbished to a high standard and offers living accommodation of circa 4000 sq ft with a self contained annexe above the double garage. The property sits on a large plot of just under 0.5Acre and is located in this quiet cul de sac in Collingtree Park with good access to local amenities and the M1. The accommodation comprises: Entrance hall, lounge, kitchen/dining room, family room, living room, utility room, study, 2xwc's, bedroom one with dressing room and ensuite, four further bedrooms, two ensuites, bathroom, self contained Annexe, large front and south facing rear garden, and driveway leading to double garage

 **stonhills**
LAND & ESTATE AGENTS

GROUND FLOOR



1ST FLOOR



Whilst every attempt has been made to ensure the accuracy of the floorplan contained here, measurements of doors, windows, rooms and any other items are approximate and no responsibility is taken for any error, omission or mis-statement. This plan is for illustrative purposes only and should be used as such by any prospective purchaser. The services, systems and appliances shown have not been tested and no guarantee as to their operability or efficiency can be given.
Made with Metropix ©2023



Energy Efficiency Rating		
	Current	Potential
Very energy efficient - lower running costs		
(92 plus) A		
(81-91) B		
(69-80) C		
(55-68) D		
(39-54) E		
(21-38) F		
(1-20) G		
Not energy efficient - higher running costs		
England & Wales	EU Directive 2002/91/EC	

Agents Note: Whilst every care has been taken to prepare these particulars, they are for guidance purposes only. All measurements are approximate and are for general guidance purposes only and whilst every care has been taken to ensure their accuracy, they should not be relied upon and potential buyers/tenants are advised to recheck the measurements

Northampton Office Sales
39 St Giles Street
Northampton
Northamptonshire
NN1 1JF

01604 624424
lewis@stonhills.co.uk
<https://www.stonhills.co.uk/>

