



RE/MAX
CLYDESDALE & TWEEDDALE

62 Jerviston Road, Motherwell

Offers Over **£399,995**

62 Jerviston Road, Motherwell

Step into something truly special. This **elegant sandstone villa** is the kind of home that rarely becomes available – rich in character, generous in space, and made for lasting memories.

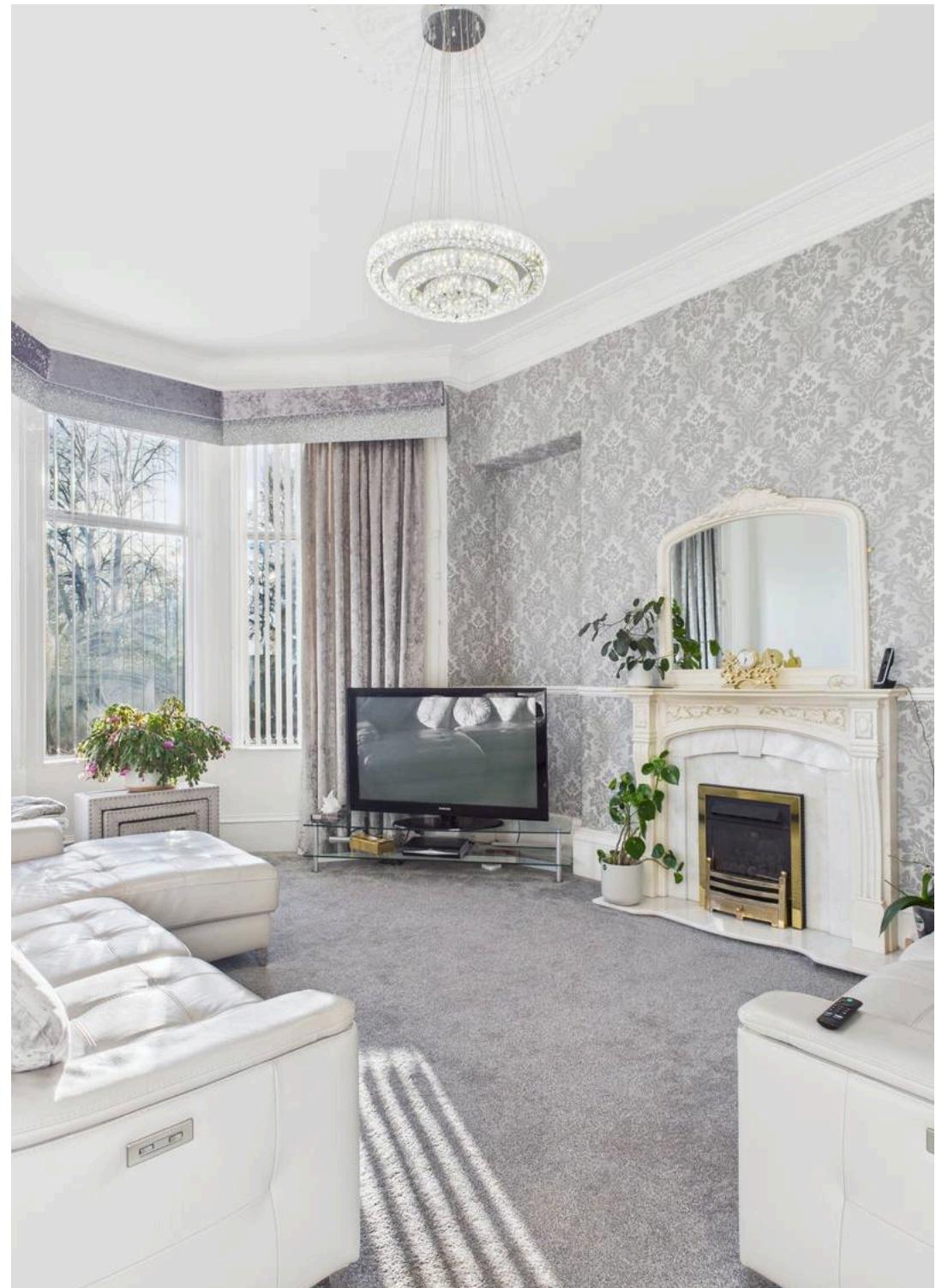
Lovingly maintained and set on a commanding plot, this grand property offers **five spacious bedrooms plus a flexible sixth**, two stunning bay-windowed lounges, and a **dedicated dining room** that flows beautifully into the rear of the home. The **kitchen is separate**, bright and well-equipped, with a **large utility room** leading to a **convenient downstairs bathroom** – ideal for guests or busy family life.

Upstairs you'll find a further **family bathroom** and an **additional WC**, along with generous double bedrooms and ample storage throughout.

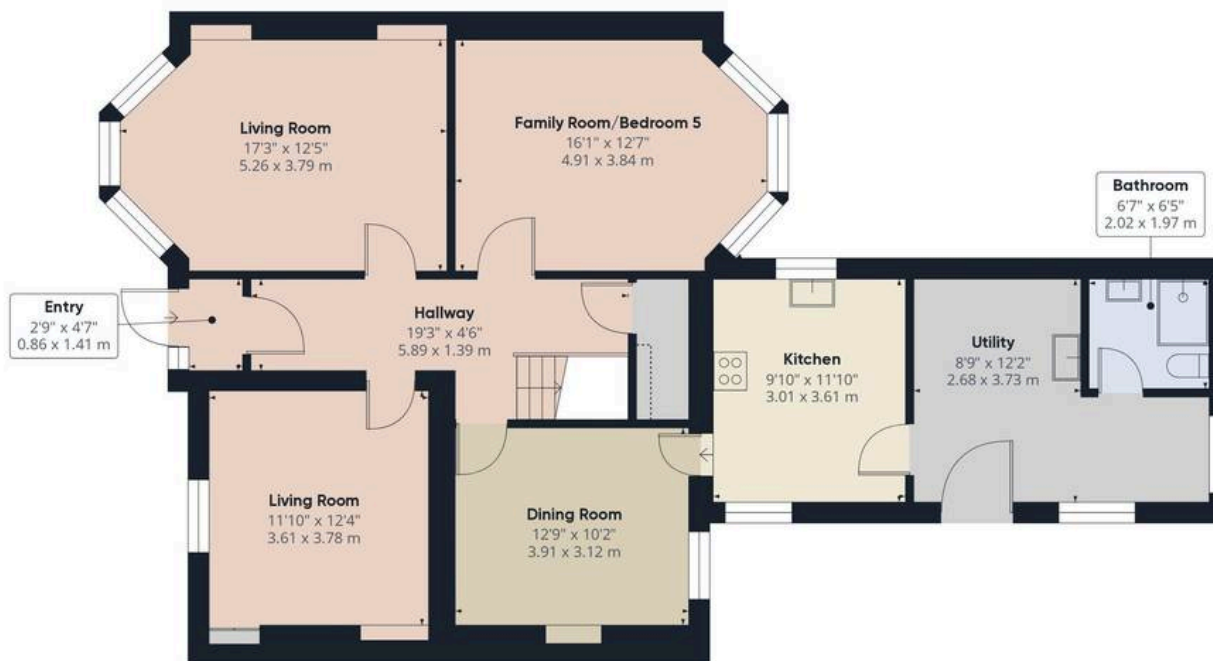
Outside, this home truly stands out – with a **wraparound monoblock driveway**, **detached double garage**, and **well-kept, low-maintenance gardens**. It's the kind of setting that gives you space to breathe, grow, and enjoy life to the fullest.

This home isn't just big on square footage – it's big on soul, offering the perfect blend of tradition, flexibility, and everyday comfort.

- A forever home full of heart
- Five beautiful bedrooms plus a sixth option
- Two bay-windowed lounges with fireplaces
- Bright, flowing kitchen/diner with utility and WC
- Wraparound monoblock driveway & detached double garage
- Expansive gardens on a standout plot
- Across from Colville Park Golf Club & in Dalziel High catchment







Ground Floor



Floor 1

Approximate total area⁽¹⁾

1987.04 ft²

184.6 m²

(1) Excluding balconies and terraces

Reduced headroom

..... Below 5 ft/1.5 m

While every attempt has been made to ensure accuracy, all measurements are approximate, not to scale. This floor plan is for illustrative purposes only.

Calculations are based on RICS IPMS 3C standard.

GIRAFFE360



RE/MAX Clydesdale & Tweeddale – Carluke

Remax Clydesdale, 31A High Street – ML8 4AL

01555 752444

carluke@remax-clydesdale.net

www.remax-scotland.net/estate-agents/clydesdale

These particulars are prepared by us on the basis of information provided by our clients. We have not tested the electrical system, appliances or heating system. All sizes are recorded by laser to give an indicative, approximate size only. Prospective purchasers should make their own enquiries, no warranty is given or implied. This schedule is not intended to, and does not form any contract. Anti-Money Laundering Regulations – Purchasers will be asked to produce identification documentation at a later stage and we would ask for your co-operation in order that there will be no delay in agreeing the sale. NOTING INTEREST If you are interested in this property please ask your solicitor to notify us. This is referred to as "noting interest" and will ensure that you are informed of any