





48 Sanderling

Lesmahagow, Lanark

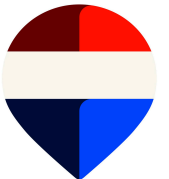
Well-presented and deceptively spacious, two bedroom top floor flat situated in the semi-rural town of Lesmahagow.

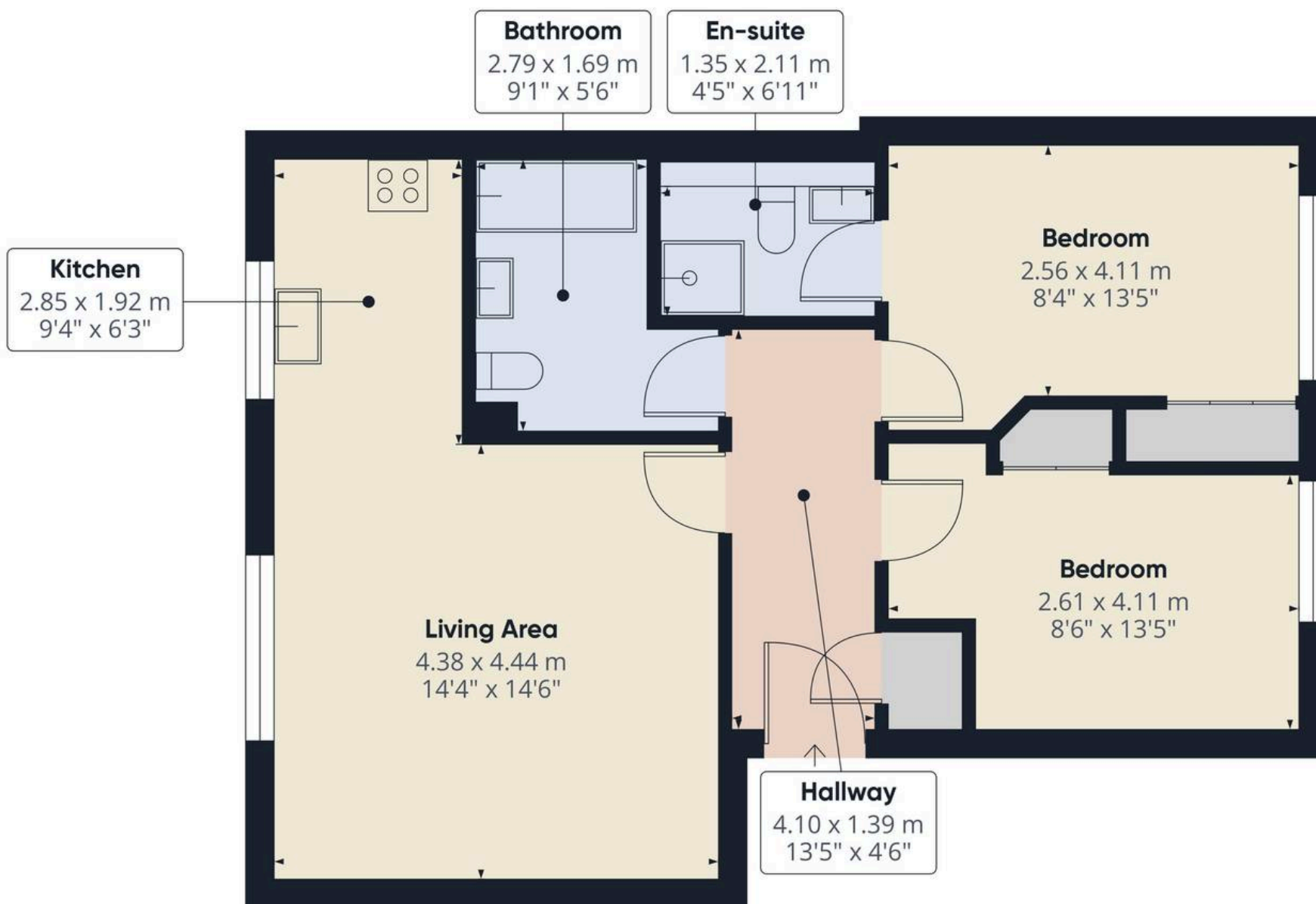
The property is entered via a secure door entry into a communal stairwell and has accommodation comprising, open plan lounge and well-appointed kitchen area, master bedroom with an en-suite shower room, second bedroom and a family bathroom.

Externally there is a communal garden and parking area. The property further benefits from gas fired central heating.



- Upper Flat
- Two Bedrooms
- En-suite
- Communal Garden
- Communal Parking
- Gas Fired Central Heating





Approximate total area⁽¹⁾

63.1 m²

679 ft²

(1) Excluding balconies and terraces

Calculations reference the RICS IPMS 3C standard. Measurements are approximate and not to scale. This floor plan is intended for illustration only.

GIRAFFE360



RE/MAX Clydesdale

Remax, 2 High Street - ML11 7EX

01555 666990

lanark@remax-scotland.homes

www.remax-scotland.homes/estate-agents/clydesdale

These particulars are prepared by us on the basis of information provided by our clients. We have not tested the electrical system, appliances or heating system. All sizes are recorded by laser to give an indicative, approximate size only. Prospective purchasers should make their own enquiries, no warranty is given or implied. This schedule is not intended to, and does not form any contract. Anti-Money Laundering Regulations - Purchasers will be asked to produce identification documentation at a later stage and we would ask for your co-operation in order that there will be no delay in agreeing the sale. NOTING INTEREST If you are interested in this property please ask your solicitor to notify us. This is referred to as "noting interest" and will ensure that you are informed of any