



£310,000

Stanworth Court, Church Road

Hounslow, TW5 0LB

PROPERTY SUMMARY

Share of Freehold

Recently refurbished, 2 bedroom first floor flat offers a spacious reception room, separate kitchen and two well-proportioned bedrooms and bathroom suite. Other benefits include, off street parking and own garage.

Stanworth Court, is situated on church road, in the heart of Heston Village, on the door step to excellent transport links and local amenities.

Lease remaining: 937 years (sold with a share of freehold)

Service Charge: £1800 p.a.

Ground Rent: NIL

2



1



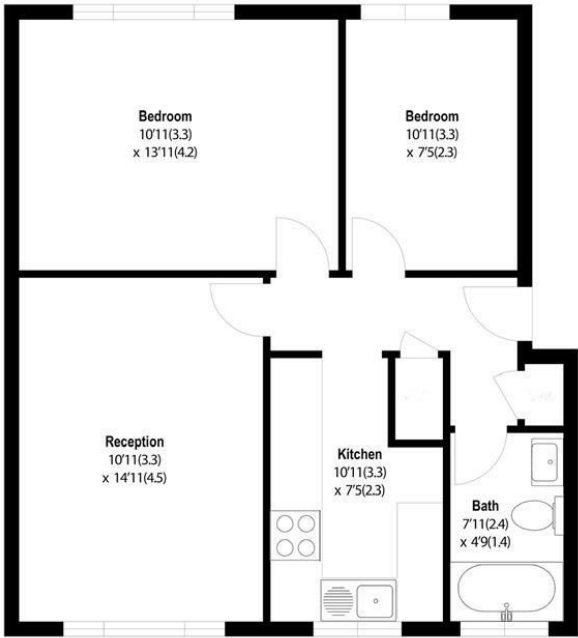
1





Stanworth Court-TW5

Approximate Gross Internal Area = 56 sq m/ 606 sq ft
Outside Buildings = 0 sq m/ 0 sq ft
Total = 56 sq m/ 606 sq ft
For identification only - Not to scale



First Floor

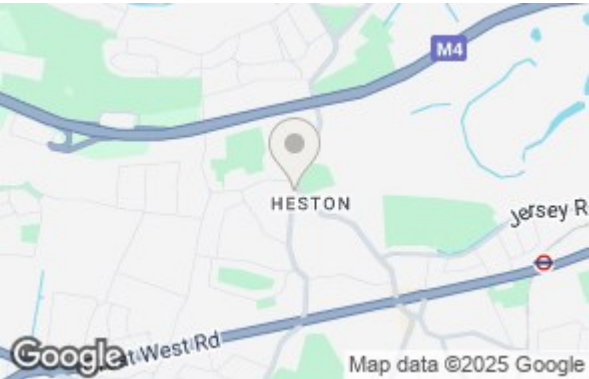
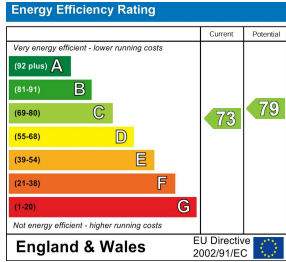
Floor plan produced in accordance with RICS Property Measurement Standards incorporating International Property Measurement Standards
Produced for Shaw & Co

LOCAL AUTHORITY
Hounslow

TENURE
Leasehold - Share of Freehold

COUNCIL TAX BAND
C

VIEWINGS
By prior appointment only



Agents Note: Whilst every care has been taken to prepare these particulars, they are for guidance purposes only. All measurements are approximate and are for general guidance purposes only and whilst every care has been taken to ensure their accuracy, they should not be relied upon and potential buyers/tenants are advised to recheck the measurements

Shaw
& Co
ESTATE
AGENTS

OFFICE ADDRESS
10 Central Parade
New Heston Road
Heston
Middlesex
TW5 0LJ

OFFICE DETAILS
0208 570 7258
heston@shawandcoestates.com