

**£680,000**

**Willow Gardens**

Hounslow, TW3 4JS



## PROPERTY SUMMARY

Immaculate 3-Bedroom Extended Semi-Detached Home - Willow Gardens, Hounslow.

This beautifully presented extended three-bedroom semi detached house in Willow Gardens, Hounslow offers modern living with no onward chain.

The property has been finished to a suave standard throughout and boasts an impressive open-plan ground floor living space with a bright lounge , dining area and a stylish new kitchen complete with integrated appliances. A convenient downstairs WC further enhances practicality.

Upstairs there are three generous bedrooms and a well-appointed family bathroom . The home also offers potential to extend further (STPP),making it ideal for growing families.

Outside you'll find a lovely private garden ,perfect for relaxing.

This property has excellent bus links and is close proximity to Hounslow West & Central Stations. There is also easy access to local shops, restaurants & amenities.

Viewings are highly recommended.

3



2



1









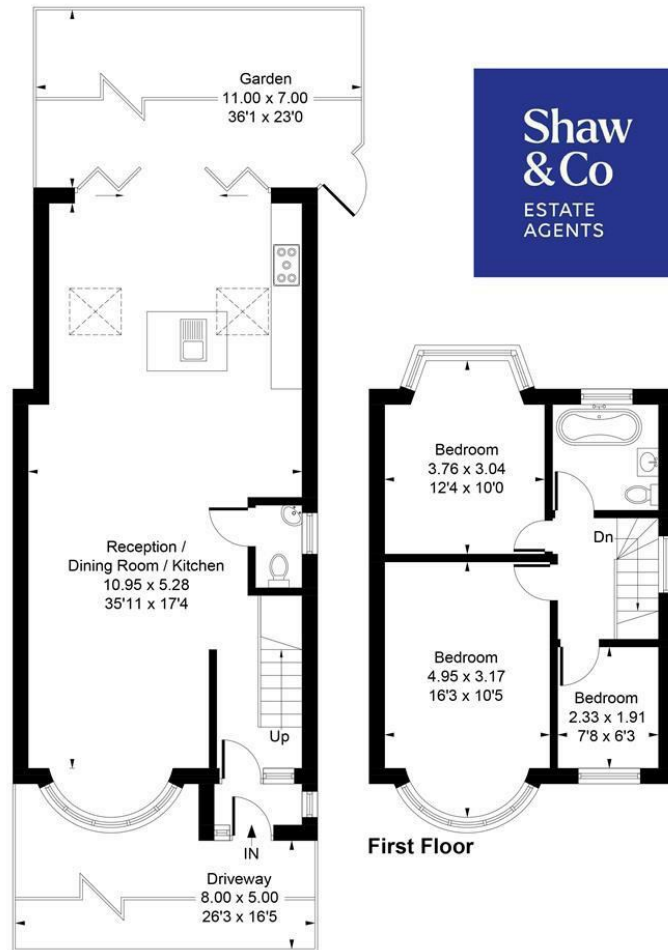








Approximate Gross Internal Area  
101.64 sq m / 1094 sq ft



#### Ground Floor

Whilst every attempt has been made to ensure the accuracy of the floor plan contained here, measurements of doors, windows, rooms and any other items are approximate and no responsibility is taken for any error, omission, or mis-statement.  
This plan is for illustrative purposes only and should be used as such by any prospective purchaser.  
© Vizion Property Marketing Produced for Shaw & Co.

#### LOCAL AUTHORITY

Hillingdon

#### TENURE

Freehold

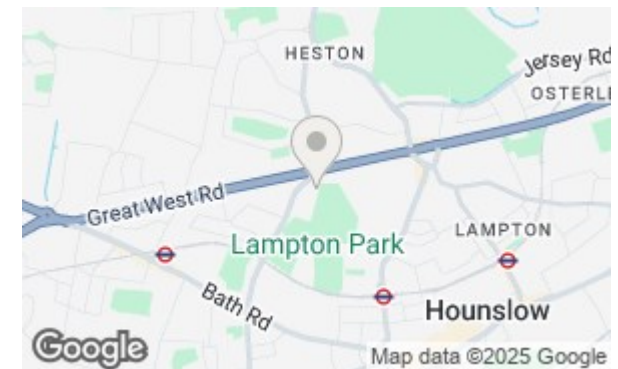
#### COUNCIL TAX BAND

D

#### VIEWINGS

By prior appointment only

Energy Efficiency Rating		
	Current	Potential
Very energy efficient - lower running costs		
(92 plus) A		
(81-91) B		
(69-80) C		
(55-68) D		
(39-54) E		
(21-38) F		
(1-20) G		
Not energy efficient - higher running costs		
England & Wales		EU Directive 2002/91/EC



Agents Note: Whilst every care has been taken to prepare these particulars, they are for guidance purposes only. All measurements are approximate and are for general guidance purposes only and whilst every care has been taken to ensure their accuracy, they should not be relied upon and potential buyers/tenants are advised to recheck the measurements

**Shaw  
& Co**  
ESTATE  
AGENTS

#### OFFICE ADDRESS

10 Central Parade  
New Heston Road  
Heston  
Middlesex  
TW5 0LH

#### OFFICE DETAILS

0208 570 7258  
heston@shawandcoestates.com