

£650,000

The Drive

Hounslow, TW3 1PW



PROPERTY SUMMARY

3-Bedroom Semi-Detached Home - The Drive, Hounslow

This well-presented three-bedroom semi-detached house is located on the highly sought-after The Drive Hounslow offering excellent space, convenience & future potential.

The property features three good sized bedrooms, Kitchen with integrated appliances, downstairs WC with shower, family bathroom upstairs, making it ideal for families. The home is in good condition throughout and ready to move into with no onward chain.

One of the key highlights of this property is the approved planning permission for a rear extension, providing an exciting opportunity to further enhance and increase the living space. Full details are available upon request.

Externally , there is a private rear garden and a driveway for off-street parking.

Situated close to local shops, excellent transport links and well regarded schools, this property offers both convenience and comfort in a fantastic location.

Contact our dedicated sales team for a viewing on the open day right away!

3



2

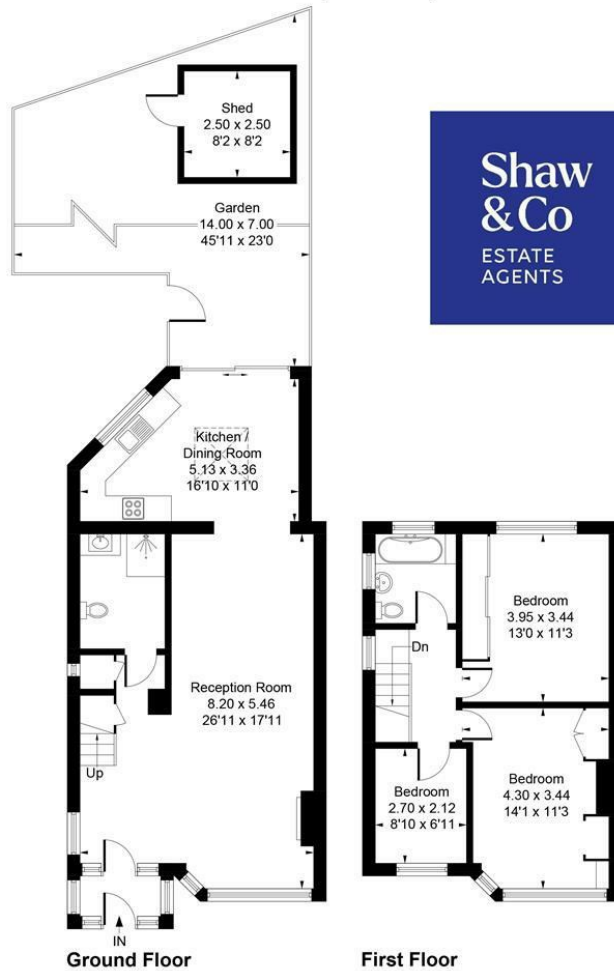


1





Approximate Gross Internal Area = 108.18 sq m / 1165 sq ft
 Shed = 6.25 sq m / 67 sq ft
 Total = 114.43 sq m / 1232 sq ft



Whilst every attempt has been made to ensure the accuracy of the floor plan contained here, measurements of doors, windows, rooms and any other items are approximate and no responsibility is taken for any error, omission, or mis-statement.
 This plan is for illustrative purposes only and should be used as such by any prospective purchaser.
 © Vizion Property Marketing Produced for Shaw & Co.

LOCAL AUTHORITY

Hounslow

TENURE

Freehold

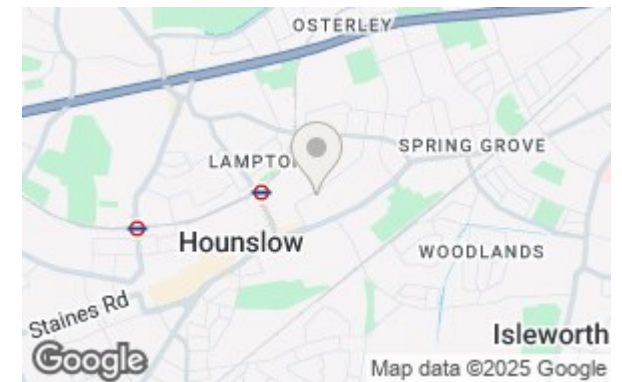
COUNCIL TAX BAND

E

VIEWINGS

By prior appointment only

Energy Efficiency Rating		
	Current	Potential
Very energy efficient - lower running costs		
(92 plus) A		
(81-91) B		85
(69-80) C	70	
(55-68) D		
(39-54) E		
(21-38) F		
(1-20) G		
Not energy efficient - higher running costs		
England & Wales	EU Directive 2002/91/EC	



Agents Note: Whilst every care has been taken to prepare these particulars, they are for guidance purposes only. All measurements are approximate and are for general guidance purposes only and whilst every care has been taken to ensure their accuracy, they should not be relied upon and potential buyers/tenants are advised to recheck the measurements

**Shaw
& Co**
ESTATE
AGENTS

OFFICE ADDRESS
 10 Central Parade
 New Heston Road
 Heston
 Middlesex
 TW5 0LJ

OFFICE DETAILS
 0208 570 7258
 heston@shawandcoestates.com