

**£474,950**

**East Road**

Feltham, TW14 8DG





## PROPERTY SUMMARY

**\*\*Planning Approved\*\***

In need of updating, this 2-Bedroom detached bungalow, has massive potential to extend/re-develop. The current owners have obtained planning consent to extend to the rear and add two first floor dormers. All planning approval notices are available up request.

The property internally consists of receptions room, two double bedrooms, bathroom, kitted kitchen leading through to an extended conservatory, large rear garden and front off street parking.

East Road is a quiet residential road within walking distance of excellent transport links. Bedfont Lakes Country Park, the Longford River and a variety of shops are also in close proximity.

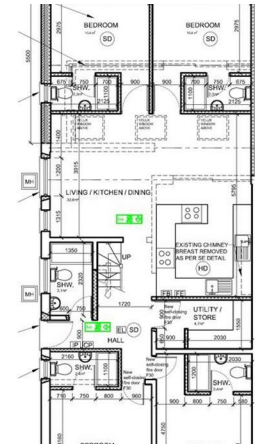
2

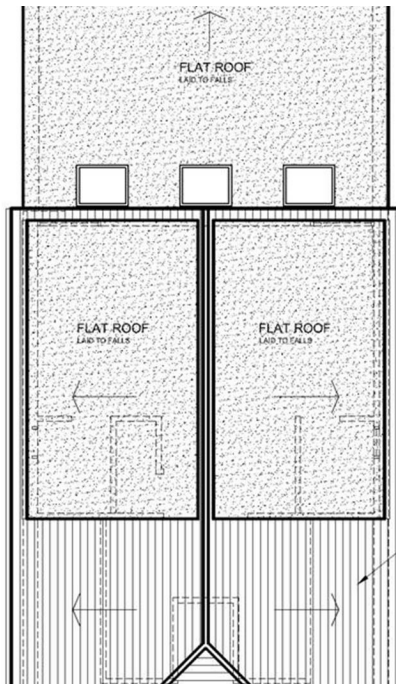


1



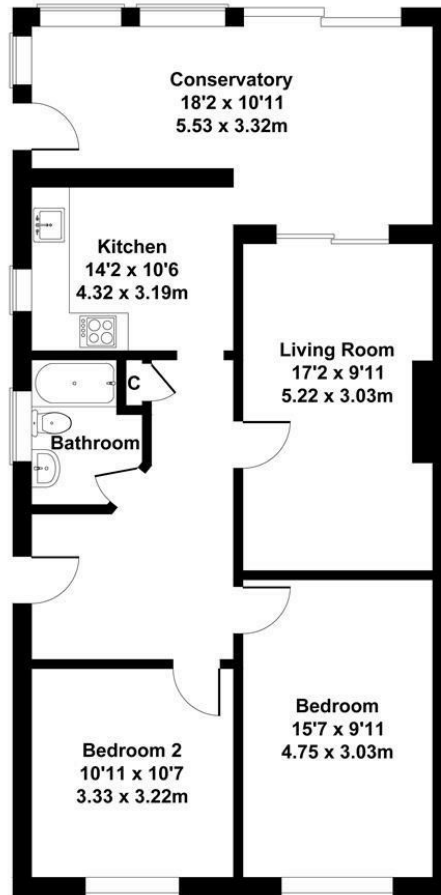
1





## East Road, Bedfont

Approximate Gross Internal Area  
936 sq ft - 87 sq m



Not to Scale. Produced by The Plan Portal 2023  
For Illustrative Purposes Only.



**LOCAL AUTHORITY**  
Hounslow London Borough Council

**TENURE**  
Freehold

**COUNCIL TAX BAND**  
D

**VIEWINGS**  
By prior appointment only

Energy Efficiency Rating		
	Current	Potential
Very energy efficient - lower running costs		
(92 plus) A		85
(81-91) B		
(69-80) C		
(55-68) D	55	
(39-54) E		
(21-38) F		
(1-20) G		
Not energy efficient - higher running costs		
England & Wales		EU Directive 2002/91/EC



Agents Note: Whilst every care has been taken to prepare these particulars, they are for guidance purposes only. All measurements are approximate and are for general guidance purposes only and whilst every care has been taken to ensure their accuracy, they should not be relied upon and potential buyers/tenants are advised to recheck the measurements

**Shaw  
& Co**  
ESTATE  
AGENTS

**OFFICE ADDRESS**  
10 Central Parade  
New Heston Road  
Heston  
Middlesex  
TW5 0LJ

**OFFICE DETAILS**  
0208 570 7258  
heston@shawandcoestates.com