



Shaw
& Co
ESTATE
AGENTS

OFFERS OVER

£386,999

Wheatlands

HOUNSLOW, TW5 0SD

Shaw
& Co

PROPERTY SUMMARY

Presented to the market is this delightful two-bedroom home, perfectly positioned in a peaceful corner of Heston. Boasting charming kerb appeal with a well-maintained front garden, the property opens into a bright and generously sized reception room—ideal for both relaxing and entertaining. The separate kitchen is thoughtfully laid out, featuring direct access to a beautifully landscaped rear garden, perfect for al fresco dining or unwinding outdoors.

Upstairs, you'll find two spacious double bedrooms along with a stylish and well-appointed family bathroom, offering both comfort and functionality.

Located on Wheatlands, this home benefits from excellent connectivity, with easy access to Hounslow, Osterley, and Southall, making it ideal for commuters and families alike.

Viewings are highly recommended, for further information please contact us.

2



1



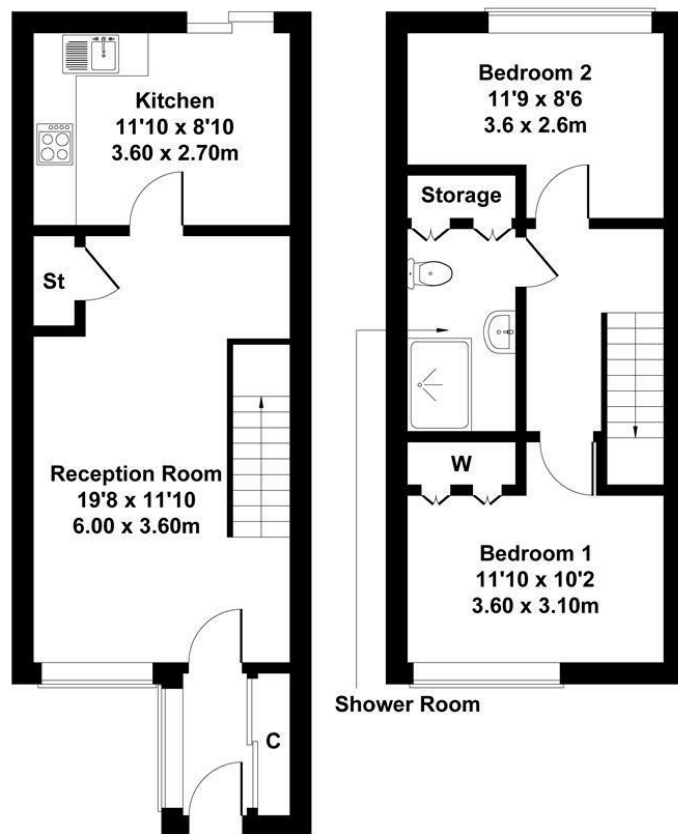
1





Wheatlands

Approximate Gross Internal Area
721 sq ft - 67 sq m



GROUND FLOOR

FIRST FLOOR

Not to Scale. Produced by The Plan Portal 2025
For Illustrative Purposes Only.

Shaw
& Co

LOCAL AUTHORITY

Hounslow

TENURE

Leasehold

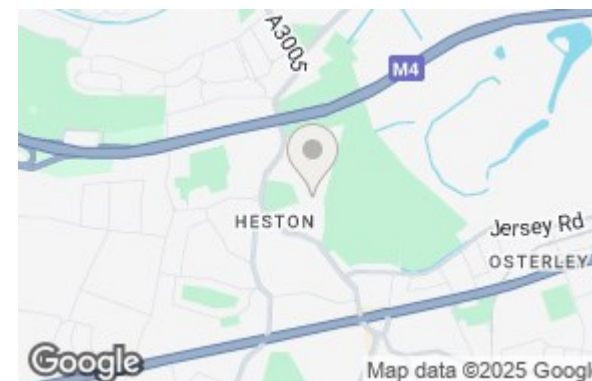
COUNCIL TAX BAND

C

VIEWINGS

By prior appointment only

Energy Efficiency Rating		
	Current	Potential
Very energy efficient - lower running costs		
(92 plus) A		
(81-91) B		88
(69-80) C		
(55-68) D	66	
(39-54) E		
(21-38) F		
(1-20) G		
Not energy efficient - higher running costs		
England & Wales	EU Directive 2002/91/EC	



Agents Note: Whilst every care has been taken to prepare these particulars, they are for guidance purposes only. All measurements are approximate and are for general guidance purposes only and whilst every care has been taken to ensure their accuracy, they should not be relied upon and potential buyers/tenants are advised to recheck the measurements

Shaw
& Co
ESTATE
AGENTS

OFFICE ADDRESS
10 Central Parade
New Heston Road
Heston
Middlesex
TW5 0LJ

OFFICE DETAILS
0208 570 7258
heston@shawandcoestates.com