

**Shaw
& Co**
ESTATE
AGENTS

OFFERS OVER

£700,000

Adelaide Road

Hounslow, TW5 9AG

**Shaw
& Co**

PROPERTY SUMMARY

Welcome to this charming property located on Adelaide Road in the sought after area of Heston. This delightful house boasts four/five bedrooms and three bathrooms, there is ample space for everyone in the household.

Spanning across 1,528 square feet, this property offers a generous living space for a growing family. The house features a unique layout with the fourth bedroom benefiting from an en suite, providing added convenience and privacy.

The spacious through lounge is ideal for hosting gatherings or enjoying quiet evenings in. The highlight of this home is the extended kitchen/dining area, designed to impress even the most discerning chef. Imagine preparing delicious meals in this stunning kitchen while enjoying the company of your loved ones in the adjacent dining space.

This property is in good condition throughout, ensuring that you can move in hassle-free and start creating unforgettable memories. Don't miss the opportunity to make this house your home and experience the comfort and elegance it has to offer.

5



3



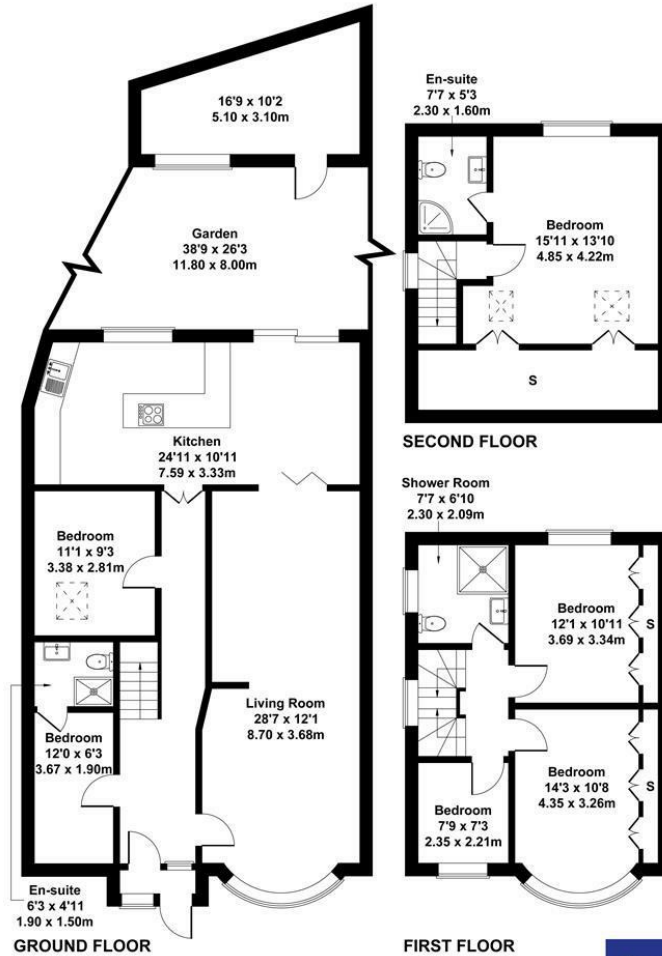
2





Adelaide Road, Hounslow

Approximate Gross Internal Area
1991 sq ft - 185 sq m



Not to Scale. Produced by The Plan Portal 2024
For Illustrative Purposes Only.

Shaw
& Co

LOCAL AUTHORITY

TENURE

Freehold

COUNCIL TAX BAND

VIEWINGS

By prior appointment only

Energy Efficiency Rating		
	Current	Potential
Very energy efficient - lower running costs		
(92 plus) A		
(81-91) B		
(69-80) C		
(55-68) D		
(39-54) E		
(21-38) F		
(1-20) G		
Not energy efficient - higher running costs		
England & Wales		
EU Directive 2002/91/EC		



Agents Note: Whilst every care has been taken to prepare these particulars, they are for guidance purposes only. All measurements are approximate and are for general guidance purposes only and whilst every care has been taken to ensure their accuracy, they should not be relied upon and potential buyers/tenants are advised to recheck the measurements

Shaw
& Co
ESTATE
AGENTS

OFFICE ADDRESS
10 Central Parade
New Heston Road
Heston
Middlesex
TW5 0LJ

OFFICE DETAILS
0208 570 7258
heston@shawandcoestates.com