



**Shaw
& Co**
ESTATE
AGENTS

£320,000

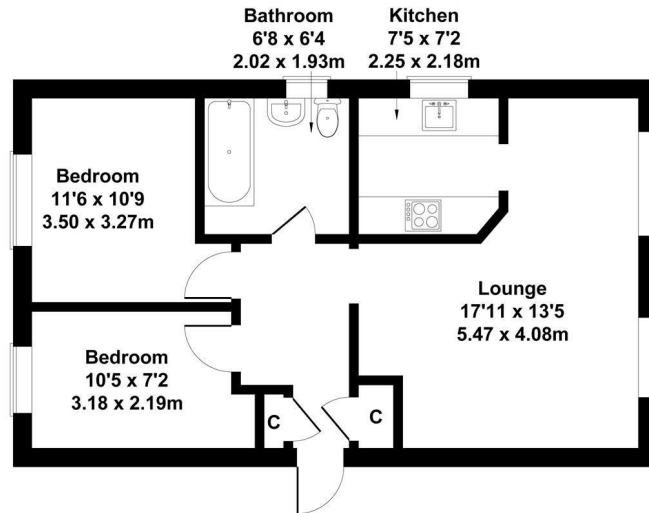
Nuffield Court, Old Park Mews

Hounslow, TW5 0QX

**Shaw
& Co**

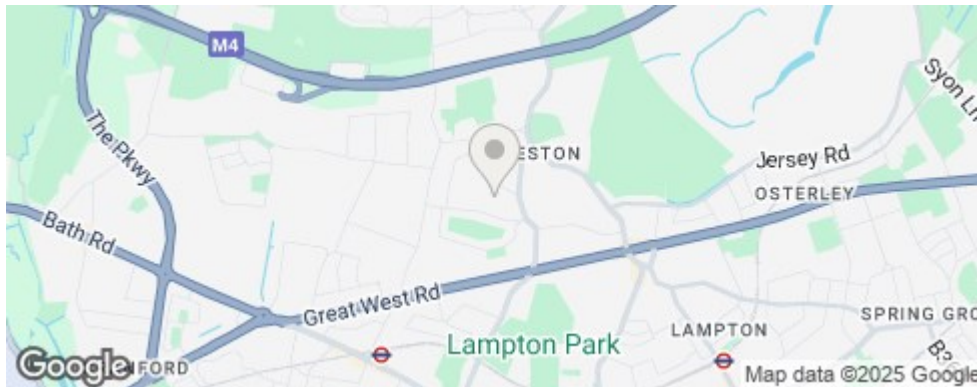
Nuffield Court, Heston

Approximate Gross Internal Area
592 sq ft - 55 sq m



Not to Scale. Produced by The Plan Portal 2025
For Illustrative Purposes Only.

Shaw
& Co



Energy Efficiency Rating		
	Current	Potential
Very energy efficient - lower running costs		
(92 plus) A		
(81-91) B		
(69-80) C		
(55-68) D		
(39-54) E		
(21-38) F		
(1-20) G		
Not energy efficient - higher running costs		
England & Wales	65	75
EU Directive 2002/91/EC		

Agents Note: Whilst every care has been taken to prepare these particulars, they are for guidance purposes only. All measurements are approximate and are for general guidance purposes only and whilst every care has been taken to ensure their accuracy, they should not be relied upon and potential buyers/tenants are advised to recheck the measurements

**Shaw
& Co**
ESTATE
AGENTS

OFFICE ADDRESS
10 Central Parade
New Heston Road
Heston
Middlesex
TW5 0LH

OFFICE DETAILS
0208 570 7258
heston@shawandcoestates.com