

**Shaw
& Co**
ESTATE
AGENTS



£299,995
Stanworth Court
Hounslow, TW5 0LB



**Shaw
& Co**

PROPERTY SUMMARY

Share of Freehold

Stanworth Court, is situated in the heart of Heston Village, on the door step to excellent transport links and local amenities. This spacious 2 bedroom first floor flat offers a spacious reception room, separate kitchen and two well-proportioned bedrooms and bathroom suite. Other benefits include, off street parking and own garage.

Lease remaining: 937 years (sold with a share of freehold)

Service Charge: £1800 p.a.

Ground Rent: NIL

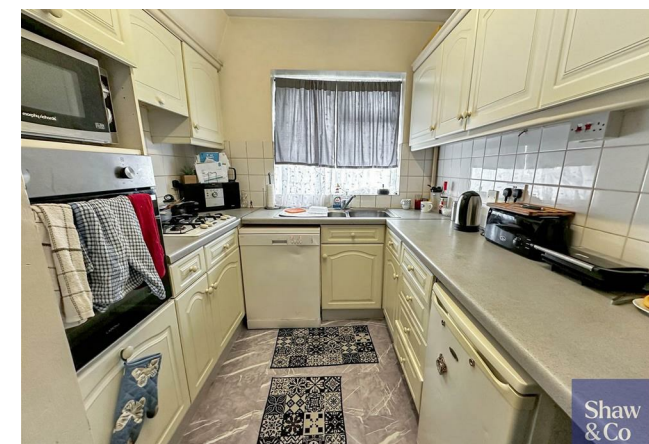
2



1



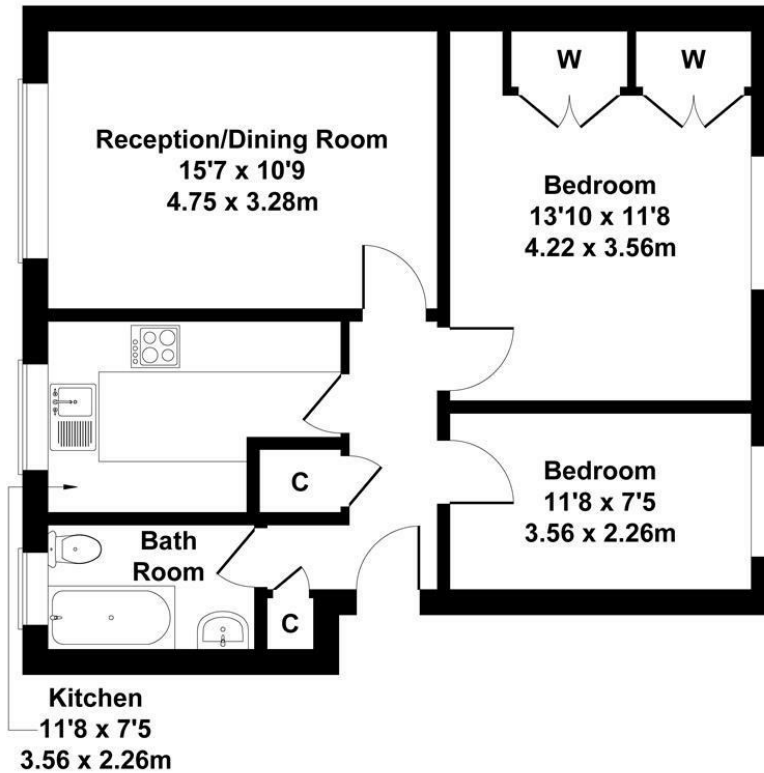
1





Stanworth Court, Heston

Approximate Gross Internal Area
614 sq ft - 57 sq m



Not to Scale. Produced by The Plan Portal 2025
For Illustrative Purposes Only.

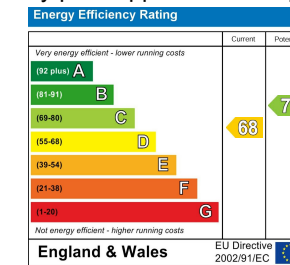
Shaw
& Co

LOCAL AUTHORITY
Hounslow London Borough Council

TENURE
Leasehold - Share of Freehold

COUNCIL TAX BAND
C

VIEWINGS
By prior appointment only



Agents Note: Whilst every care has been taken to prepare these particulars, they are for guidance purposes only. All measurements are approximate and are for general guidance purposes only and whilst every care has been taken to ensure their accuracy, they should not be relied upon and potential buyers/tenants are advised to recheck the measurements

**Shaw
& Co**
ESTATE
AGENTS

OFFICE ADDRESS
10 Central Parade
New Heston Road
Heston
Middlesex
TW5 0LJ

OFFICE DETAILS
0208 570 7258
heston@shawandcoestates.com