



**Shaw
& Co**
ESTATE
AGENTS

£270,000

Chrislea Close

Hounslow, TW5 0DD

PROPERTY SUMMARY

Welcome to Page House, located in the desirable area of Chrislea Close, Heston. This immaculate first-floor flat offers a perfect blend of comfort and modern living, making it an ideal choice for individuals or couples seeking a stylish home.

The flat comprises one generously sized bedroom, providing a peaceful retreat for rest and relaxation. The bathroom is thoughtfully designed, ensuring convenience and comfort. One of the standout features of this property is the delightful balcony, which offers a lovely outdoor space to enjoy fresh air and views.

For those with a vehicle, the property includes off street parking, adding to the convenience of urban living. Built after the year 2000, this flat benefits from 10 year building warranty, modern construction standards, ensuring a comfortable and energy-efficient environment.

Tenure: Leasehold Lease Years Remaining: 117

Service Charge: £963

Annual Ground Rent: £10

Council Tax Band: C

1



1



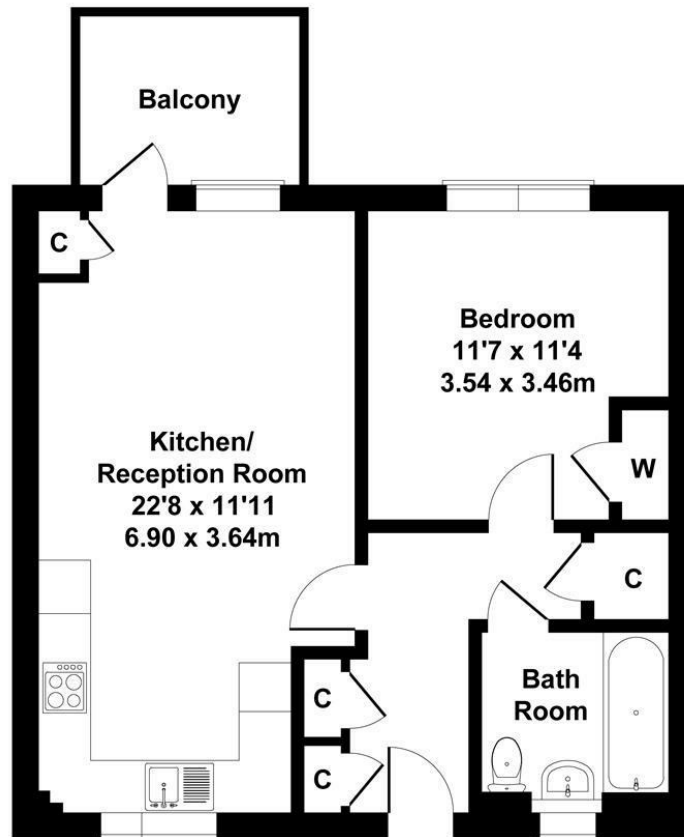
1





Chrislea Close, Heston

Approximate Gross Internal Area
541 sq ft - 50.22 sq m



Not to Scale. Produced by The Plan Portal 2025
For Illustrative Purposes Only.

Shaw
& Co

LOCAL AUTHORITY

Hounslow

TENURE

Leasehold

COUNCIL TAX BAND

C

VIEWINGS

By prior appointment only

Energy Efficiency Rating		
	Current	Potential
Very energy efficient - lower running costs		
(92 plus) A		
(81-91) B	83	83
(69-80) C		
(55-68) D		
(39-54) E		
(21-38) F		
(1-20) G		
Not energy efficient - higher running costs		
England & Wales	EU Directive 2002/91/EC	



Agents Note: Whilst every care has been taken to prepare these particulars, they are for guidance purposes only. All measurements are approximate and are for general guidance purposes only and whilst every care has been taken to ensure their accuracy, they should not be relied upon and potential buyers/tenants are advised to recheck the measurements

Shaw
& Co
ESTATE
AGENTS

OFFICE ADDRESS
10 Central Parade
New Heston Road
Heston
Middlesex
TW5 0LJ

OFFICE DETAILS
0208 570 7258
heston@shawandcoestates.com