

£125,000

Hibernia Road

Hounslow, TW3 3RY

P Resident
permit
holders
only **HTCS**
Mon - Fri
9.30 am - 6 pm
Saturday
9.30 am - 12.30 pm

PROPERTY SUMMARY

Shaw & Co present this studio apartment, located on the sought-after Hibernia Road in Hounslow, offers a living space. The second floor studio benefits from abundant natural light, creating a cosy and inviting atmosphere. The kitchen is thoughtfully designed and fully equipped, ensuring convenience and practicality. A well-maintained bathroom completes the layout. The property presents an excellent opportunity for first-time buyers or investors seeking a well-positioned home with great potential.

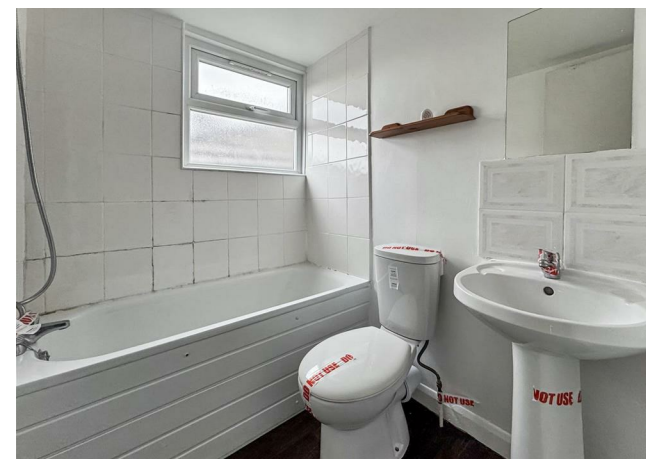
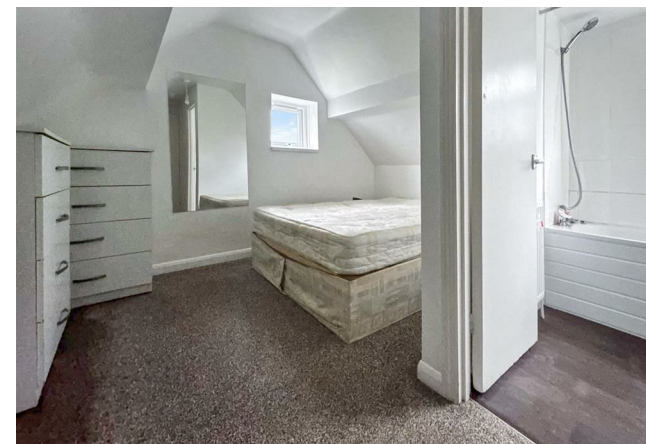
1



1



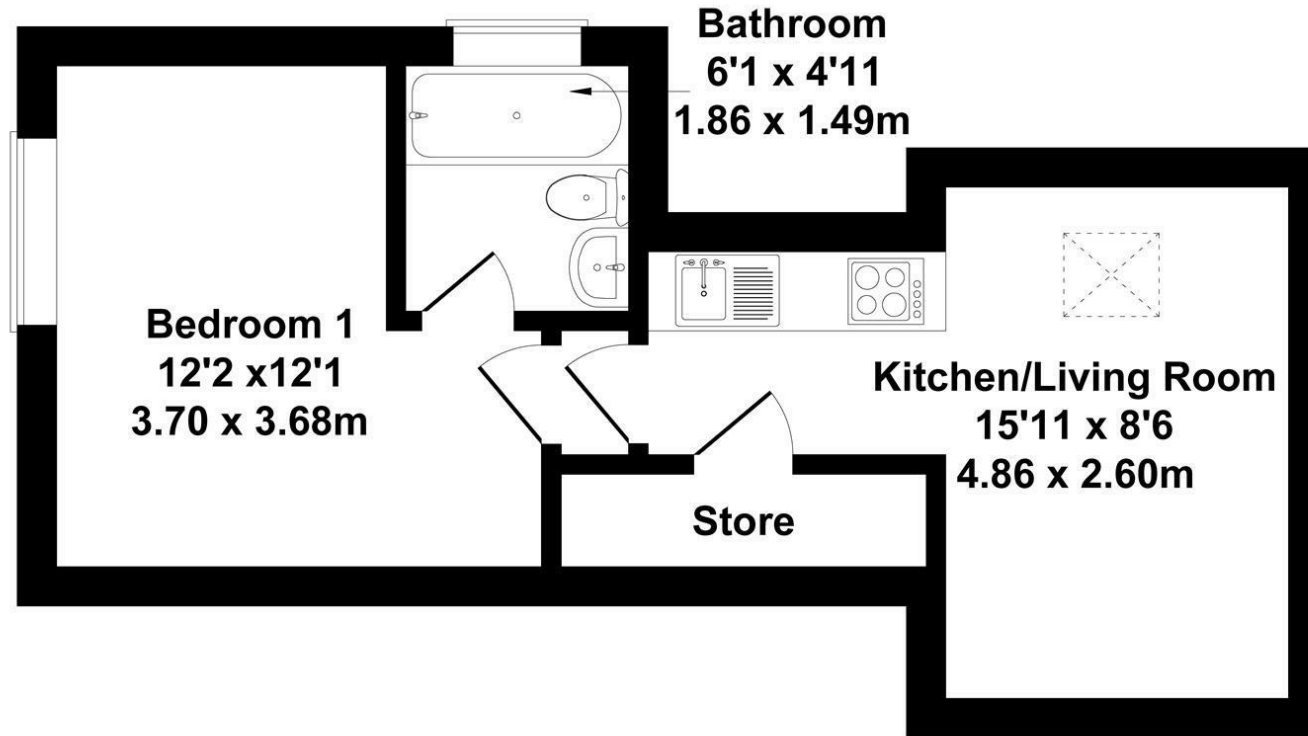
1





Hibernia Road

Approximate Gross Internal Area
344 sq ft - 32 sq m



Not to Scale. Produced by The Plan Portal 2025
For Illustrative Purposes Only.

**Shaw
& Co**

LOCAL AUTHORITY

Hounslow

TENURE

Leasehold

COUNCIL TAX BAND

Exempt

LEASE

106 Years Remaining

SERVICE CHARGE

TBC

GROUND RENT

TBC

Energy Efficiency Rating		
	Current	Potential
Very energy efficient - lower running costs		
(92 plus) A		
(81-91) B		
(69-80) C		
(55-68) D		
(39-54) E		
(21-38) F		
(1-20) G		
Not energy efficient - higher running costs		
England & Wales		
EU Directive 2002/91/EC		



Agents Note: Whilst every care has been taken to prepare these particulars, they are for guidance purposes only. All measurements are approximate and are for general guidance purposes only and whilst every care has been taken to ensure their accuracy, they should not be relied upon and potential buyers/tenants are advised to recheck the measurements

**Shaw
& Co**

ESTATE
AGENTS

OFFICE ADDRESS

10 Central Parade
New Heston Road
Heston
Middlesex
TW5 0LH

OFFICE DETAILS

0208 570 7258
heston@shawandcoestates.com