



**Shaw
& Co**
ESTATE
AGENTS

£674,950

Hunting Place

Hounslow, TW5 0NR

**Shaw
& Co**

PROPERTY SUMMARY

This impressive end terrace townhouse offers a perfect blend of modern living and convenience. Built in 2016, the property boasts a generous 1,270 square feet of well designed space, making it an ideal home for families or those seeking extra room to grow.

The residence features four spacious bedrooms, providing ample accommodation for family members or guests. Each room is filled with natural light, creating a warm and inviting atmosphere throughout the home. The property is in good condition, ensuring that you can move in with ease and enjoy your new surroundings from day one.

One of the standout features of this townhouse is the garage, offering secure parking and additional storage options. Furthermore, off street parking is available, providing added convenience for residents and visitors alike. The property is situated on a private road, enhancing the sense of peace and privacy that comes with living in this charming neighbourhood.

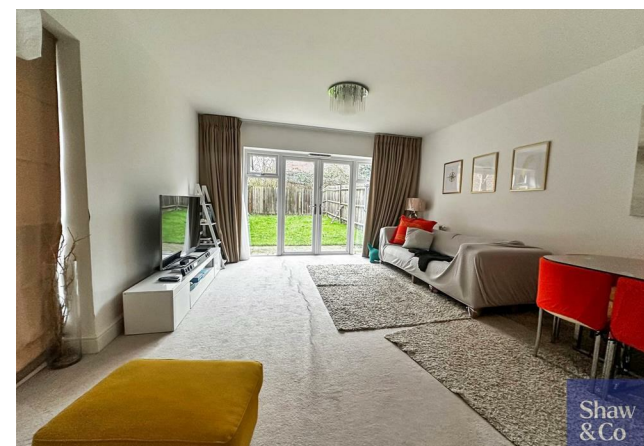
4



2



1





Shaw
& Co

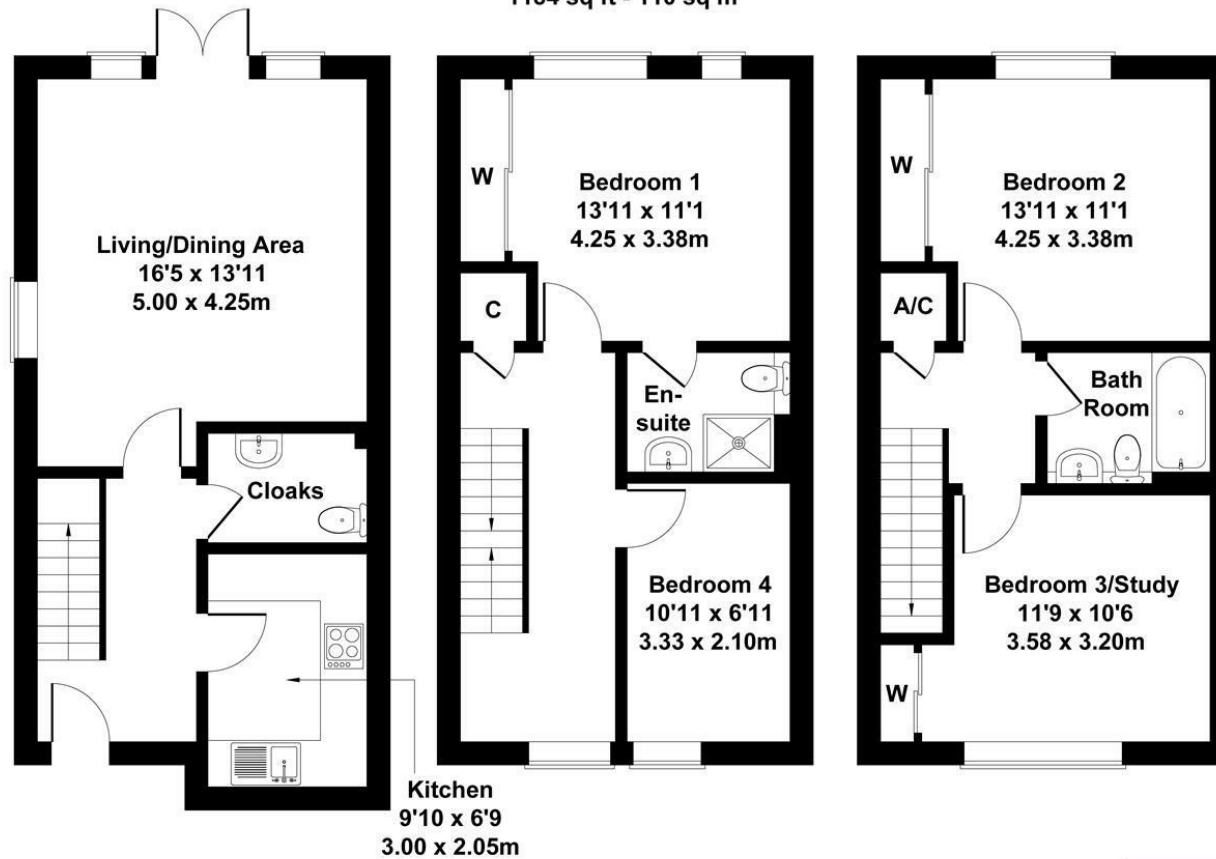




Shaw
& Co

Hunting Place, Heston

Approximate Gross Internal Area
1184 sq ft - 110 sq m



GROUND FLOOR

FIRST FLOOR

SECOND FLOOR

Not to Scale. Produced by The Plan Portal 2024
For Illustrative Purposes Only.



LOCAL AUTHORITY
Hounslow Borough

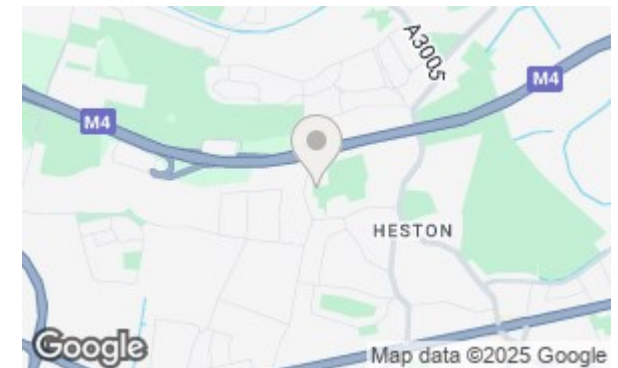
TENURE
Freehold

COUNCIL TAX BAND

VIEWINGS

By prior appointment only

Energy Efficiency Rating		
	Current	Potential
Very energy efficient - lower running costs		
(92 plus) A		
(81-91) B	89	90
(69-80) C		
(55-68) D		
(39-54) E		
(21-38) F		
(1-20) G		
Not energy efficient - higher running costs		
England & Wales	EU Directive 2002/91/EC	



Agents Note: Whilst every care has been taken to prepare these particulars, they are for guidance purposes only. All measurements are approximate and are for general guidance purposes only and whilst every care has been taken to ensure their accuracy, they should not be relied upon and potential buyers/tenants are advised to recheck the measurements

**Shaw
& Co**
ESTATE
AGENTS

OFFICE ADDRESS

10 Central Parade
New Heston Road
Heston
Middlesex
TW5 0LH

OFFICE DETAILS

0208 570 7258
heston@shawandcoestates.com