

**Shaw
& Co**
ESTATE
AGENTS

£669,950

Feltham Hill Road

Ashford, TW15 1LN

PROPERTY SUMMARY

This delightful house boasts a spacious 1,410 sq ft of living space. Built in 1955, this property exudes character and charm while offering modern comforts.

Step inside to discover two inviting reception rooms, perfect for entertaining guests or simply unwinding after a long day. With four generously sized bedrooms and three bathrooms, there is ample space for the whole family to enjoy.

Recently refurbished in 2022, this house is in stunning condition throughout, offering a fresh and contemporary feel. The potential to build an annex at the rear of the garden opens up exciting possibilities for additional living space or a private retreat.

Convenience is key with parking available for up to three cars, ensuring you never have to worry about finding a spot. Whether you're looking for a cosy family home or a stylish space to host gatherings, this property offers the perfect blend of comfort and potential. Don't miss the opportunity to make this house your own and create lasting memories in this wonderful abode.

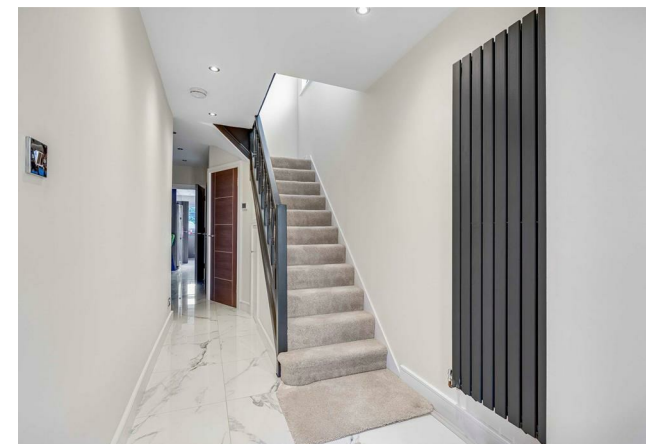
4



3



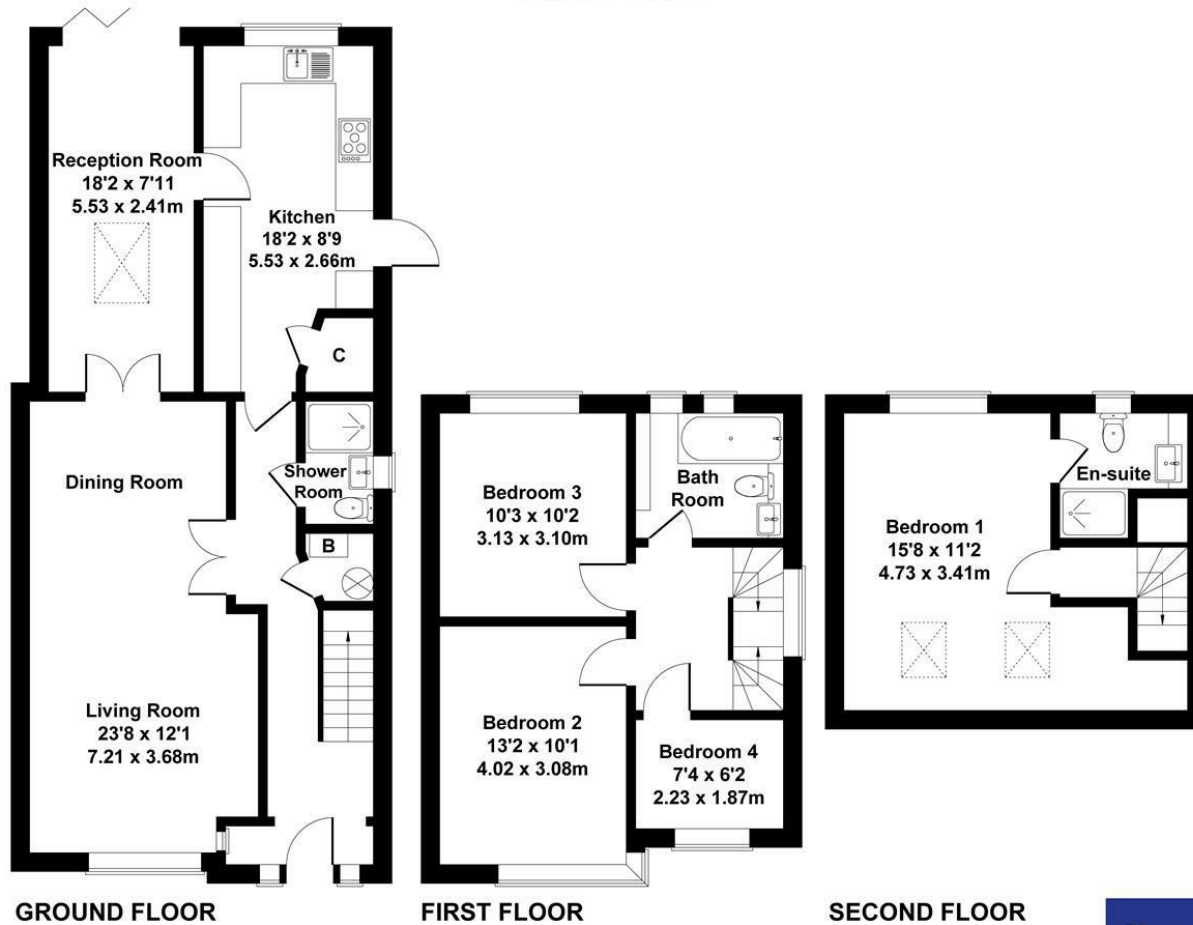
2





Feltham Hill Road, Ashford

Approximate Gross Internal Area
1442 sq ft - 134 sq m



Not to Scale. Produced by The Plan Portal 2024
For Illustrative Purposes Only.

Shaw
& Co

LOCAL AUTHORITY

TENURE

Freehold

COUNCIL TAX BAND

VIEWINGS

By prior appointment only

Energy Efficiency Rating		
	Current	Potential
Very energy efficient - lower running costs		
(92 plus) A		
(81-91) B		
(69-80) C		
(55-68) D		
(39-54) E		
(21-38) F		
(1-20) G		
Not energy efficient - higher running costs		
England & Wales	EU Directive 2002/91/EC	



Agents Note: Whilst every care has been taken to prepare these particulars, they are for guidance purposes only. All measurements are approximate and are for general guidance purposes only and whilst every care has been taken to ensure their accuracy, they should not be relied upon and potential buyers/tenants are advised to recheck the measurements

Shaw
& Co
ESTATE
AGENTS

OFFICE ADDRESS
10 Central Parade
New Heston Road
Heston
Middlesex
TW5 0LJ

OFFICE DETAILS
0208 570 7258
heston@shawandcoestates.com