



OFFERS IN EXCESS OF

£859,950

Blossom Way

Hounslow, TW5 9HB

PROPERTY SUMMARY

This delightful semi-detached house boasts a spacious layout with four/five bedrooms, perfect for a growing family or those in need of extra space.

As you step inside, you are greeted by two inviting reception rooms, ideal for entertaining guests or simply relaxing with your loved ones. The property features not just one, but two bathrooms one conveniently located downstairs and another upstairs for added convenience.

One of the highlights of this property is the outbuilding, currently set up as a gym. Imagine having your own private workout space just steps away from your front door the perfect way to stay active without ever leaving home.

The extended kitchen is a chef's dream, offering ample space for meal preparation and hosting dinner parties. Whether you enjoy cooking up a storm or simply appreciate a well designed kitchen, this space is sure to impress.

Don't miss the opportunity to make this house your home. With its generous living areas, multiple bedrooms, and convenient location in Heston, this property has all the makings of a wonderful family home. Contact us today to arrange a viewing and start envisioning your future in this lovely abode on Blossom Waye.

5



2



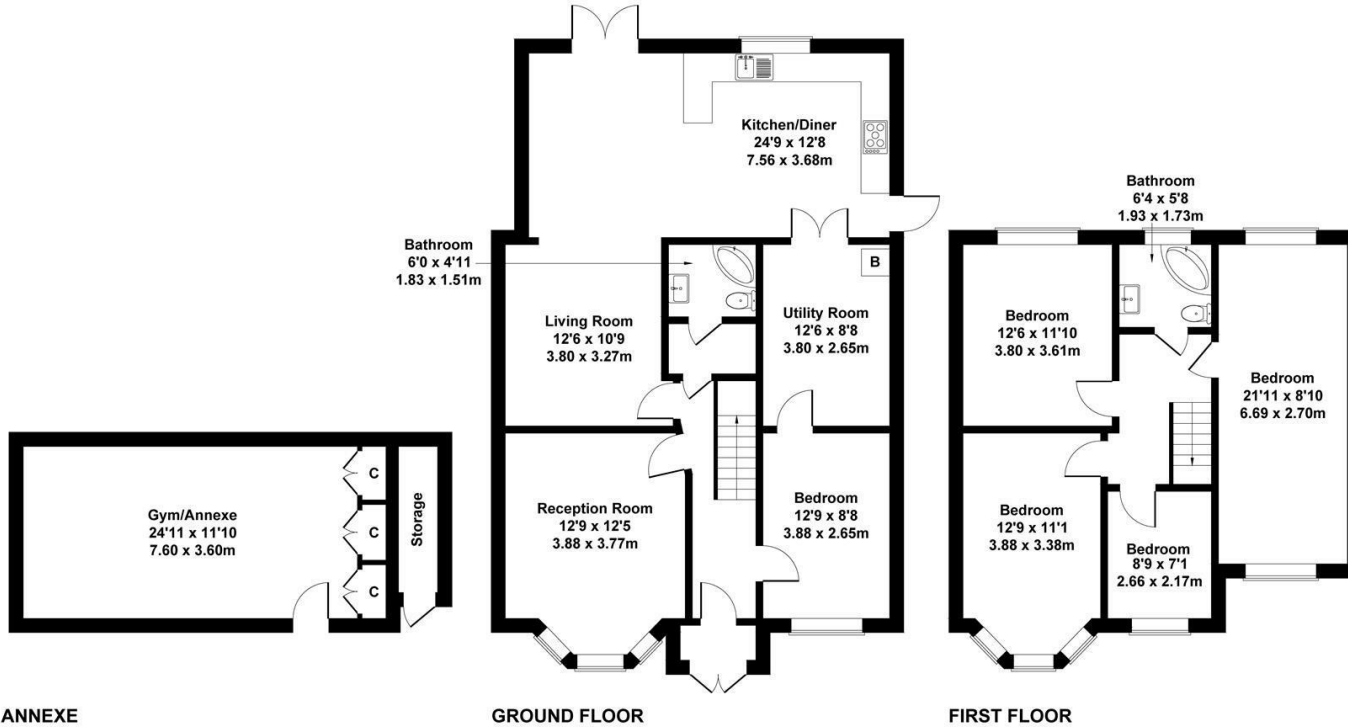
1





Blossom Waye, Heston

Approximate Gross Internal Area
2012 sq ft - 187 sq m



Not to Scale. Produced by The Plan Portal 2024
For Illustrative Purposes Only.

LOCAL AUTHORITY
Hounslow London Borough Council

TENURE
Freehold

COUNCIL TAX BAND
E

VIEWINGS
By prior appointment only

Energy Efficiency Rating		Current	Potential
Very energy efficient - lower running costs			
(92 plus) A			
(81-91) B			83
(69-80) C		70	
(55-68) D			
(39-54) E			
(21-38) F			
(1-20) G			
Not energy efficient - higher running costs			
England & Wales		EU Directive 2002/91/EC	



Agents Note: Whilst every care has been taken to prepare these particulars, they are for guidance purposes only. All measurements are approximate and are for general guidance purposes only and whilst every care has been taken to ensure their accuracy, they should not be relied upon and potential buyers/tenants are advised to recheck the measurements

Shaw & Co
ESTATE AGENTS

OFFICE ADDRESS
10 Central Parade
New Heston Road
Heston
Middlesex
TW5 0LJ

OFFICE DETAILS
0208 570 7258
heston@shawandcoestates.com