

**Shaw
& Co**
ESTATE
AGENTS

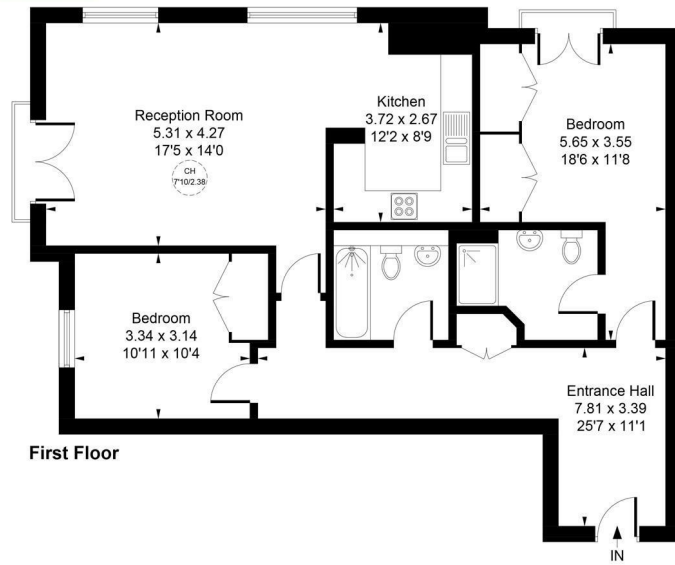
£438,500

Twickenham Road

Isleworth, TW7 7DL

Shaw & Co
ESTATE AGENTS

Approximate Gross Internal Area
91.12 sq m / 981 sq ft

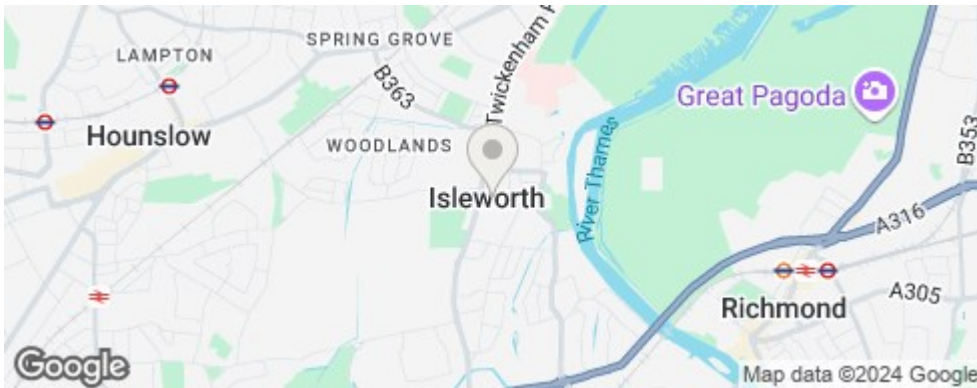


Whilst every attempt has been made to ensure the accuracy of the floor plan contained here, measurements of doors, windows, rooms and any other items are approximate and no responsibility is taken for any error, omission, or mis-statement. This plan is for illustrative purposes only and should be used as such by any prospective purchase.
© Vizion Property Marketing Produced for Shaw & Co.

2

2

1



Energy Efficiency Rating		Current	Potential
Very energy efficient - lower running costs			
(92 plus)	A		
(81-91)	B		
(69-80)	C		
(55-68)	D		
(39-54)	E		
(21-38)	F		
(1-20)	G		
Not energy efficient - higher running costs			
England & Wales		80	83
		EU Directive 2002/91/EC	

Agents Note: Whilst every care has been taken to prepare these particulars, they are for guidance purposes only. All measurements are approximate and are for general guidance purposes only and whilst every care has been taken to ensure their accuracy, they should not be relied upon and potential buyers/tenants are advised to recheck the measurements

	<p>OFFICE ADDRESS</p> <p>10 Central Parade New Heston Road Heston Middlesex TW5 0LH</p>	<p>OFFICE DETAILS</p> <p>0208 570 7258 heston@shawandcoestates.com</p>
	<p>© Vizion Property Marketing Produced for Shaw & Co.</p>	