



Shaw & Co
ESTATE AGENTS

£399,950

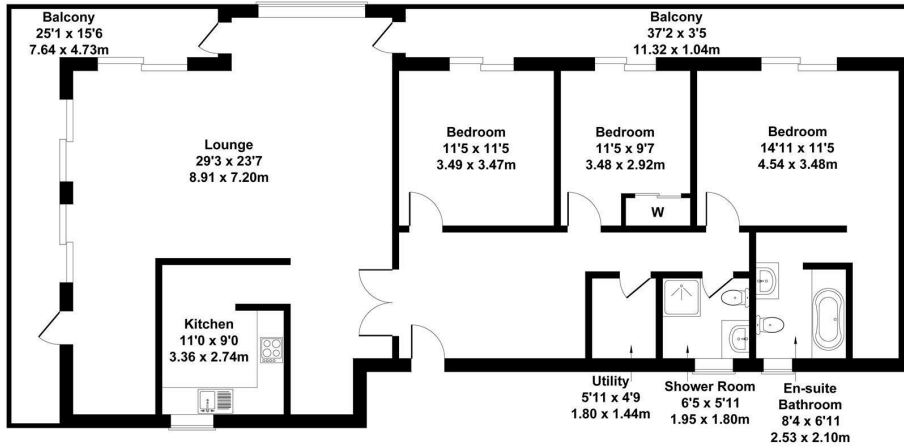
Wheatlands

Hounslow, TW5 0SL

Shaw & Co
ESTATE AGENTS

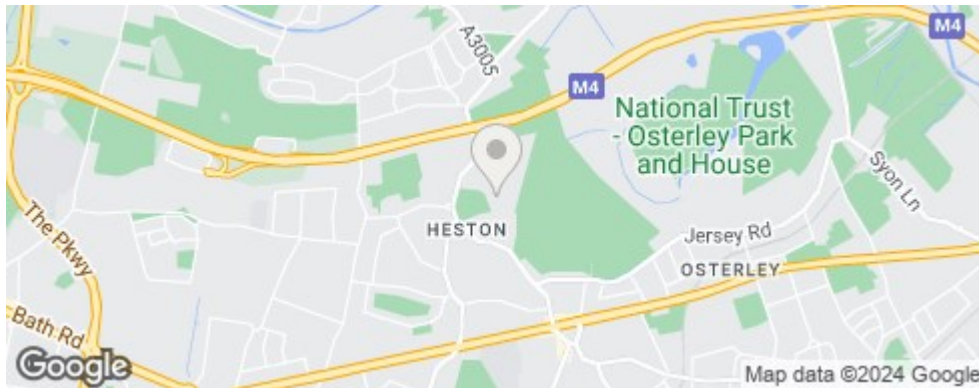
Westbourne House, Hounslow

Approximate Gross Internal Area
1421 sq ft - 132 sq m



Not to Scale. Produced by The Plan Portal 2024
For Illustrative Purposes Only.

Shaw & Co
ESTATE AGENTS



| Energy Efficiency Rating | | Current | Potential |
|---|---|-------------------------|-----------|
| Very energy efficient - lower running costs | | | |
| (92 plus) | A | | |
| (81-91) | B | | |
| (69-80) | C | | |
| (55-68) | D | | |
| (39-54) | E | | |
| (21-38) | F | | |
| (1-20) | G | | |
| Not energy efficient - higher running costs | | | |
| England & Wales | | 55 | 72 |
| | | EU Directive 2002/91/EC | |

Agents Note: Whilst every care has been taken to prepare these particulars, they are for guidance purposes only. All measurements are approximate and are for general guidance purposes only and whilst every care has been taken to ensure their accuracy, they should not be relied upon and potential buyers/tenants are advised to recheck the measurements

Shaw & Co
ESTATE AGENTS

OFFICE ADDRESS
10 Central Parade
New Heston Road
Heston
Middlesex
TW5 0LH

OFFICE DETAILS
0208 570 7258
heston@shawandcoestates.com