

Shaw & Co
ESTATE AGENTS

£494,950

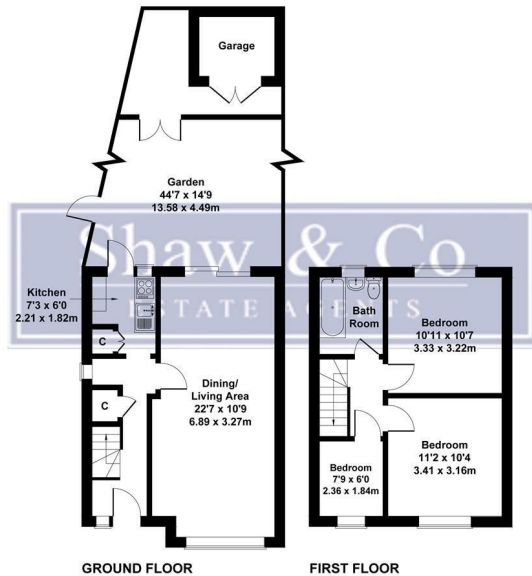
Kingsbridge Crescent

Southall, UB1 2DL

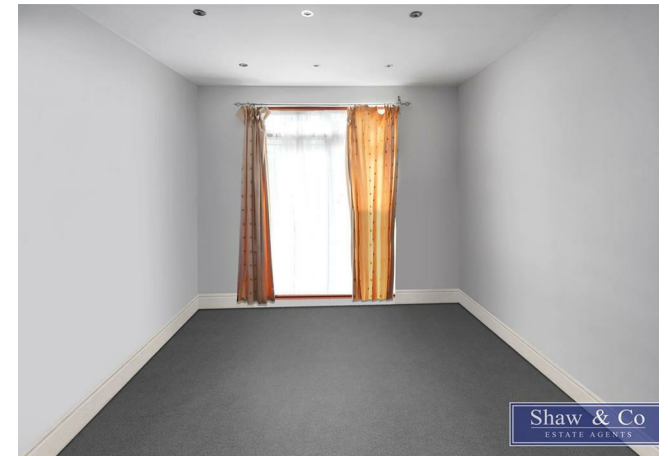
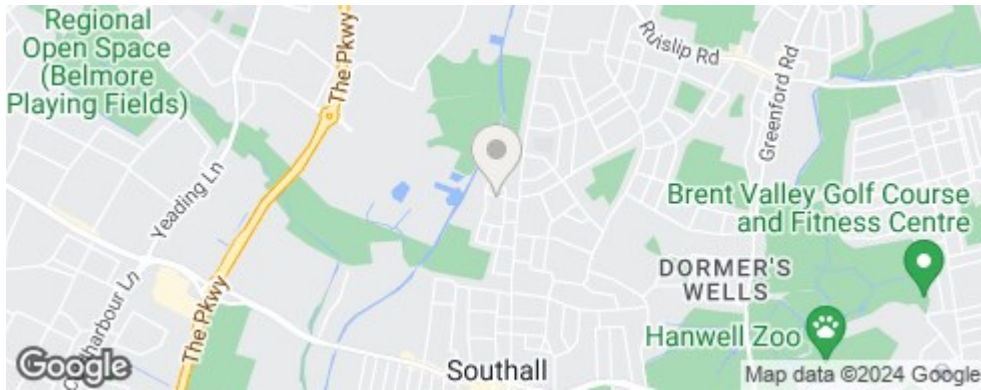
Shaw & Co
ESTATE AGENTS

Kingsbridge Crescent, Southall

Approximate Gross Internal Area
797 sq ft - 74 sq m



Not to Scale, Produced by The Plan Portal 2023
For Illustrative Purposes Only.



Energy Efficiency Rating		Current	Potential
Very energy efficient - lower running costs			
(92 plus)	A		87
(81-91)	B		
(69-80)	C		
(55-68)	D	58	
(39-54)	E		
(21-38)	F		
(1-20)	G		
Not energy efficient - higher running costs			
England & Wales		EU Directive 2002/91/EC	

Agents Note: Whilst every care has been taken to prepare these particulars, they are for guidance purposes only. All measurements are approximate and are for general guidance purposes only and whilst every care has been taken to ensure their accuracy, they should not be relied upon and potential buyers/tenants are advised to recheck the measurements

Shaw & Co
ESTATE AGENTS

OFFICE ADDRESS
10 Central Parade
New Heston Road
Heston
Middlesex
TW5 0LH

OFFICE DETAILS
0208 570 7258
heston@shawandcoestates.com