

**Shaw
& Co**
ESTATE
AGENTS

£574,950

Berkeley Waye

Hounslow, TW5 9HL

PROPERTY SUMMARY

Nestled in the sought after location comes this charming three bedroom extended semi-detached house awaits its new owners. Boasting two reception rooms, a downstairs shower room, and an upstairs bathroom, this property offers the perfect canvas for creating your dream family home.

Set off Cranford Lane, this residence provides a peaceful retreat from the hustle and bustle of everyday life while still being conveniently located near local amenities. Although in need of updating, this property presents an exciting opportunity to tailor the space to your personal taste and style.

With its generous living spaces and desirable location, this house is an ideal choice for those looking to establish roots in a welcoming community. Don't miss out on the chance to transform this property into a warm and inviting home for you and your loved ones.

3



2

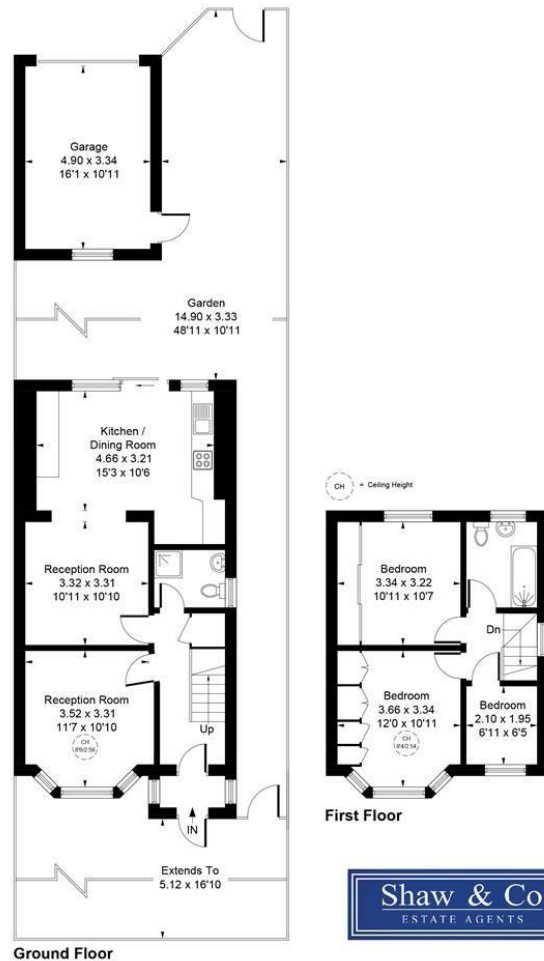


2





Approximate Gross Internal Area = 91.31 sq m / 983 sq ft
 Garage = 16.86 sq m / 181 sq ft
 Total = 108.17 sq m / 1164 sq ft



Ground Floor

First Floor



Whilst every attempt has been made to ensure the accuracy of the floor plan contained here, measurements of doors, windows, rooms and any other items are approximate and no responsibility is taken for any error, omission, or mis-statement.
 This plan is for illustrative purposes only and should be used as such by any prospective purchaser.
 © Vizion Property Marketing Produced for Shaw & Co.

LOCAL AUTHORITY

Hounslow

TENURE

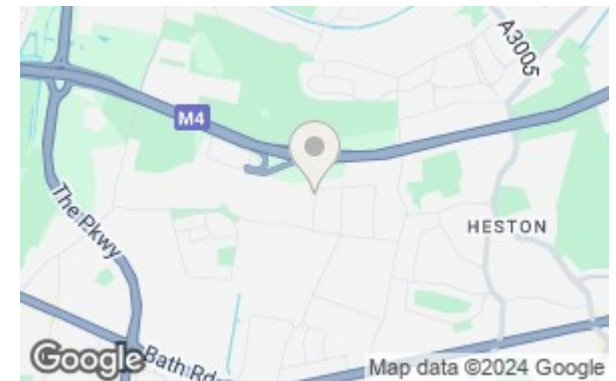
Freehold

COUNCIL TAX BAND

VIEWINGS

By prior appointment only

Energy Efficiency Rating		Current	Potential
Very energy efficient - lower running costs			
(92 plus) A			88
(81-91) B			
(69-80) C		67	
(55-68) D			
(39-54) E			
(21-38) F			
(1-20) G			
Not energy efficient - higher running costs			
England & Wales		EU Directive 2002/91/EC	



Agents Note: Whilst every care has been taken to prepare these particulars, they are for guidance purposes only. All measurements are approximate and are for general guidance purposes only and whilst every care has been taken to ensure their accuracy, they should not be relied upon and potential buyers/tenants are advised to recheck the measurements

**Shaw
& Co**
ESTATE
AGENTS

OFFICE ADDRESS
 10 Central Parade
 New Heston Road
 Heston
 Middlesex
 TW5 0LJ

OFFICE DETAILS
 0208 570 7258
 heston@shawandcoestates.com