

**Shaw
& Co**
ESTATE
AGENTS

£525,000

The Crossways

Hounslow, TW5 0JL

Shaw & Co
ESTATE AGENTS

PROPERTY SUMMARY

This property is currently under offer at £525,000.

Anyone wishing to make an offer over and above this amount should contact the selling agents Shaw and Co on 02085 707 258 prior to the exchange of contracts.

Nestled in the sought after road in Heston, comes this charming 1930s semi detached house on The Crossways. Offering a fantastic opportunity for those with a vision for transformation, boasting two reception rooms, three bedrooms, and a bathroom, this property is brimming with potential.

In need of complete modernisation, this property provides a blank canvas for you to create the home of your dreams. With the added bonus of an outhouse at the rear of the garden currently housing tenants, there is also an opportunity for rental income or additional living space.

The spacious layout of this house offers a good size for comfortable living, and with the potential to extend, the possibilities are endless. Whether you're looking to create a stunning family home or a lucrative investment property, this house is sure to capture your imagination.

3



1



2





The Crossways, Heston

Approximate Gross Internal Area
1550 sq ft - 144 sq m

LOCAL AUTHORITY

Hounslow

TENURE

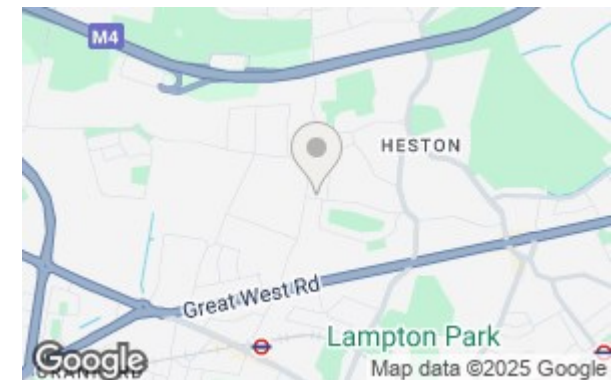
Freehold

COUNCIL TAX BAND

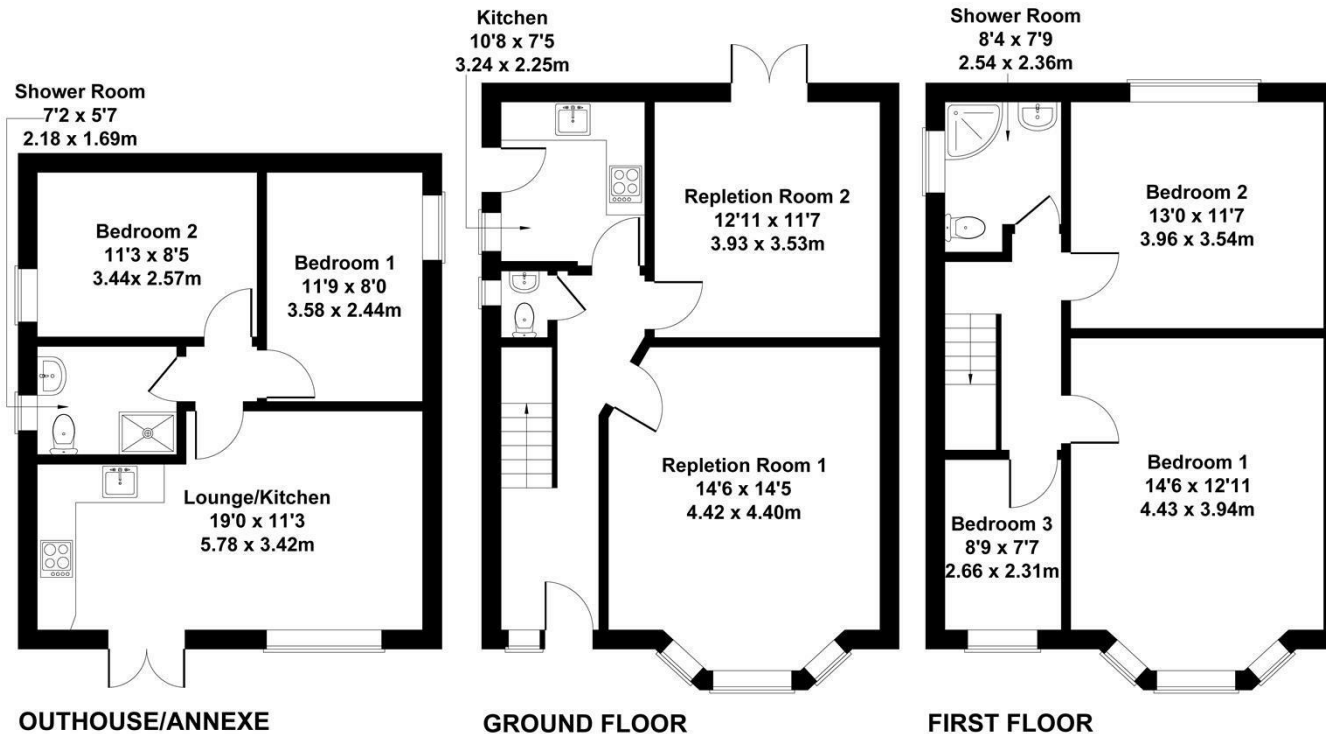
VIEWINGS

By prior appointment only

Energy Efficiency Rating		
	Current	Potential
Very energy efficient - lower running costs		
(92 plus) A		84
(81-91) B		
(69-80) C		60
(55-68) D		
(39-54) E		
(21-38) F		1-20
(1-20) G		
Not energy efficient - higher running costs		
England & Wales		EU Directive 2002/91/EC



Agents Note: Whilst every care has been taken to prepare these particulars, they are for guidance purposes only. All measurements are approximate and are for general guidance purposes only and whilst every care has been taken to ensure their accuracy, they should not be relied upon and potential buyers/tenants are advised to recheck the measurements



Not to Scale. Produced by The Plan Portal 2024
For Illustrative Purposes Only.

Shaw & Co
ESTATE AGENTS

Shaw
& Co
ESTATE
AGENTS

OFFICE ADDRESS

10 Central Parade
New Heston Road
Heston
Middlesex
TW5 0LJ

OFFICE DETAILS

0208 570 7258
heston@shawandcoestates.com