

**Shaw
& Co**
ESTATE
AGENTS

Shaw & Co
ESTATE AGENTS
For Sale
0208 570 7255
www.shawandco.com

£835,000

Thornclyffe Road

Southall, UB2 5RJ

Shaw & Co
ESTATE AGENTS

PROPERTY SUMMARY

This delightful semi detached house boasts not only a prime location on a sought-after road in Norwood Green but also offers ample space with its four bedrooms and two bathrooms.

Built in the 1930s, this property exudes character and history, making it a truly unique find. The extended kitchen/dining area is perfect for hosting family gatherings or entertaining guests, providing a warm and inviting atmosphere for all.

One of the standout features of this property is the parking space available for up to four vehicles, ensuring that you and your guests will never have to worry about finding a spot to park. Additionally, the proximity to reputable schools makes this home ideal for families looking to provide their children with a quality education.

With no chain involved, the process of making this house your home is made even smoother. Don't miss out on the opportunity to own a piece of history in a fantastic location - book a viewing today and let Thornclyffe Road steal your heart!

4



2



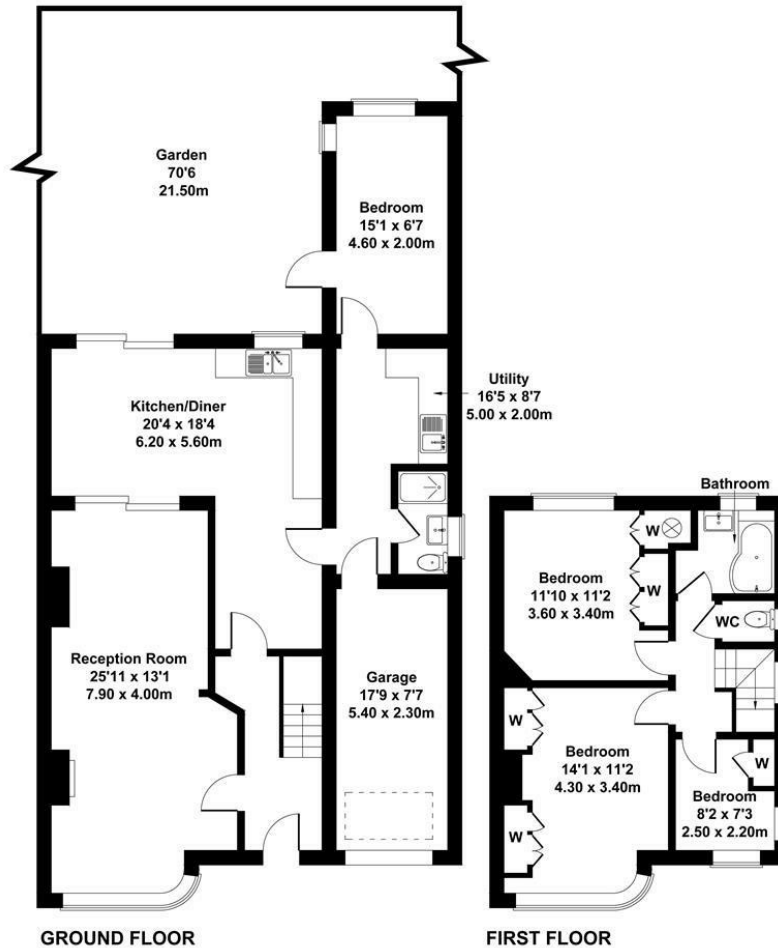
1





Thornccliffe Road, Norwood Green

Approximate Gross Internal Area
1507 sq ft - 140 sq m



GROUND FLOOR

FIRST FLOOR

Not to Scale. Produced by The Plan Portal 2024
For Illustrative Purposes Only.



LOCAL AUTHORITY
Ealing London Borough Council

TENURE
Freehold

COUNCIL TAX BAND

VIEWINGS

By prior appointment only

Energy Efficiency Rating		Current	Potential
Very energy efficient - lower running costs			
(92 plus) A			
(81-91) B			80
(69-80) C			
(55-68) D		55	
(39-54) E			
(21-38) F			
(1-20) G			
Not energy efficient - higher running costs			
England & Wales		EU Directive 2002/91/EC	



Agents Note: Whilst every care has been taken to prepare these particulars, they are for guidance purposes only. All measurements are approximate and are for general guidance purposes only and whilst every care has been taken to ensure their accuracy, they should not be relied upon and potential buyers/tenants are advised to recheck the measurements

Shaw & Co
ESTATE AGENTS

OFFICE ADDRESS
10 Central Parade
New Heston Road
Heston
Middlesex
TW5 0LJ

OFFICE DETAILS
0208 570 7258
heston@shawandcoestates.com