

**Shaw
& Co**
ESTATE
AGENTS

£535,000

Chatsworth Crescent

Hounslow, TW3 2PE

**Shaw
& Co**

PROPERTY SUMMARY

This delightful house boasts two reception rooms, three bedrooms, and a well-appointed bathroom, offering ample space for comfortable living.

With a generous 1,119 sq ft of living space, this three-bedroom semi-detached house provides a perfect setting for families looking to settle down in a vibrant community. The property's proximity to Chatsworth Primary School makes it an ideal choice for those with young children, ensuring a convenient and stress free school run.

Further benefits include a long rear garden, offering a tranquil outdoor space where you can relax and entertain guests during the warmer months. The garden also presents an exciting opportunity for those with a green thumb or a vision for expansion, as there is great potential to extend the property and create further living space.

Located in a sought-after location, this property not only offers a comfortable and spacious interior but also provides easy access to local amenities, transport links, and green spaces.

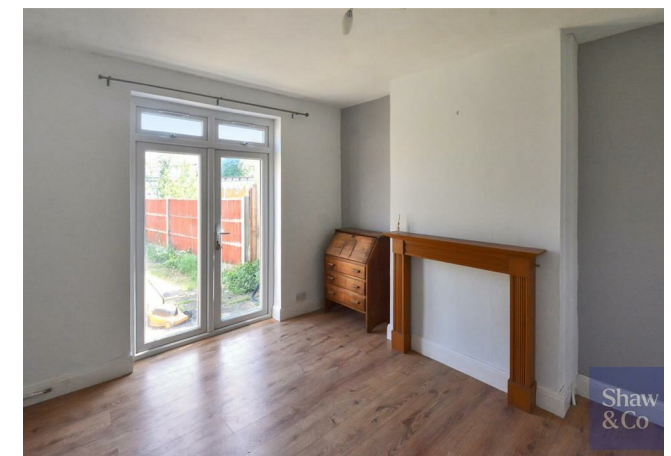
3



1



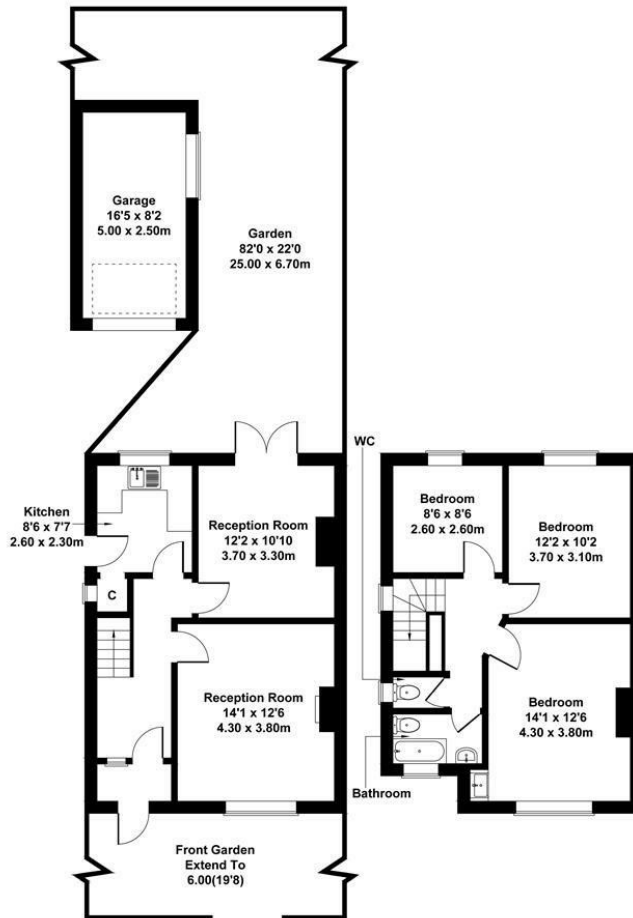
2





Chatsworth Crescent, Hounslow

Approximate Gross Internal Area
1130 sq ft - 105 sq m



GROUND FLOOR

FIRST FLOOR

Not to Scale. Produced by The Plan Portal 2024
For Illustrative Purposes Only.



LOCAL AUTHORITY

Hounslow

TENURE

Freehold

COUNCIL TAX BAND

VIEWINGS

By prior appointment only

Energy Efficiency Rating		Current	Potential
Very energy efficient - lower running costs			
(92 plus) A			86
(81-91) B			
(69-80) C			
(55-68) D		59	
(39-54) E			
(21-38) F			
(1-20) G			
Not energy efficient - higher running costs			
England & Wales		EU Directive 2002/91/EC	



Agents Note: Whilst every care has been taken to prepare these particulars, they are for guidance purposes only. All measurements are approximate and are for general guidance purposes only and whilst every care has been taken to ensure their accuracy, they should not be relied upon and potential buyers/tenants are advised to recheck the measurements

**Shaw
& Co**
ESTATE
AGENTS

OFFICE ADDRESS
10 Central Parade
New Heston Road
Heston
Middlesex
TW5 0LJ

OFFICE DETAILS
0208 570 7258
heston@shawandcoestates.com