

Shaw & Co
ESTATE AGENTS

£379,950

Primrose Place

Isleworth, TW7 5BA

Shaw & Co
ESTATE AGENTS

PROPERTY SUMMARY

Welcome to Primrose Place, Isleworth - a charming property that offers the perfect blend of comfort and convenience. This delightful flat boasts a spacious reception room, kitchen, two cosy bedrooms and two modern bathrooms, including an en suite, this property provides ample space for a small family or professionals looking for a comfortable living space.

Built in 2004, this house features a well-designed layout across 850 sq ft, offering a cosy yet functional living environment. The highlight of this property is the lovely balcony, where you can enjoy your morning coffee or unwind in the evening while taking in the surrounding views.

Located within walking distance to Isleworth Station, this property ensures easy access to transportation links, making your daily commute a breeze. Whether you're looking to explore the city or enjoy the local amenities, this house's prime location makes it a desirable choice for those seeking both convenience and tranquillity.

2



2



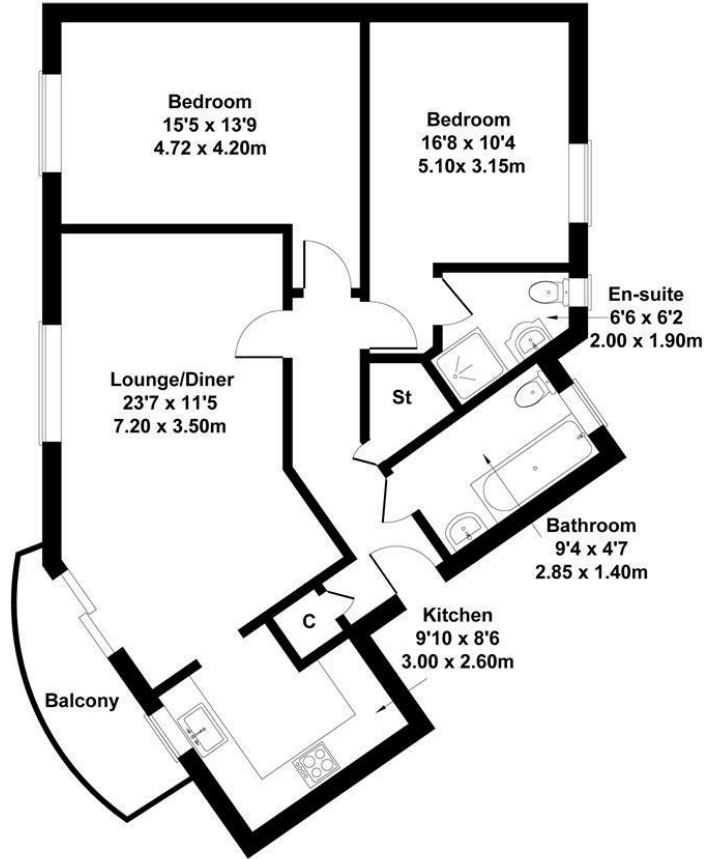
1





Primrose Place, Isleworth

Approximate Gross Internal Area
871 sq ft - 81 sq m



SECOND FLOOR

Not to Scale. Produced by The Plan Portal 2024
For Illustrative Purposes Only.



LOCAL AUTHORITY

Hounslow

TENURE

Leasehold

COUNCIL TAX BAND

VIEWINGS

By prior appointment only

Energy Efficiency Rating		Current	Potential
Very energy efficient - lower running costs			
(92 plus) A			
(81-91) B			
(69-80) C		76	82
(55-68) D			
(39-54) E			
(21-38) F			
(1-20) G			
Not energy efficient - higher running costs			
England & Wales		EU Directive 2002/91/EC	



Agents Note: Whilst every care has been taken to prepare these particulars, they are for guidance purposes only. All measurements are approximate and are for general guidance purposes only and whilst every care has been taken to ensure their accuracy, they should not be relied upon and potential buyers/tenants are advised to recheck the measurements

Shaw & Co
ESTATE AGENTS

OFFICE ADDRESS

10 Central Parade
New Heston Road
Heston
Middlesex
TW5 0LJ

OFFICE DETAILS

0208 570 7258
heston@shawandcoestates.com