

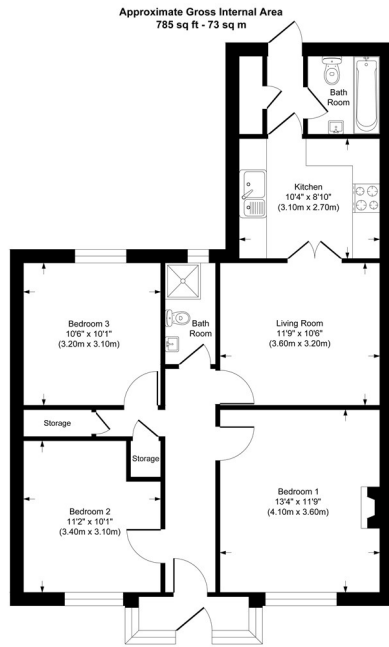
**Shaw & Co**  
ESTATE AGENTS



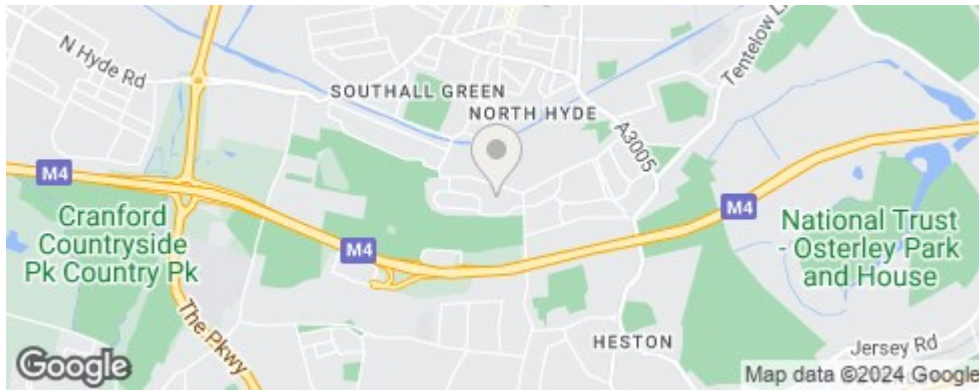
**£399,950**

**Rostrevor Gardens**  
SOUTHALL, UB2 5SD

**Shaw &**  
ESTATE AGENTS



Although every attempt has been made to ensure accuracy, all measurements are approximate. This floorplan is for illustrative purposes only and not to scale. Measured in accordance with RICS Standards.



Agents Note: Whilst every care has been taken to prepare these particulars, they are for guidance purposes only. All measurements are approximate and are for general guidance purposes only and whilst every care has been taken to ensure their accuracy, they should not be relied upon and potential buyers/tenants are advised to recheck the measurements

Energy Efficiency Rating		Current	Potential
Very energy efficient - lower running costs			
(92 plus)	A		
(81-91)	B		
(69-80)	C		
(55-68)	D		
(39-54)	E		
(21-38)	F		
(1-20)	G		
Not energy efficient - higher running costs			
<b>England &amp; Wales</b>		EU Directive 2002/91/EC	

## Shaw & Co

ESTATE AGENTS

**OFFICE ADDRESS**

10 Central Parade  
New Heston Road  
Heston  
Middlesex  
TW5 0LH

**OFFICE DETAILS**

0208 570 7258  
heston@shawandcoestates.com