



2 Croft Cottages , Compton, Chichester PO18 9EX



RURAL FLINT COTTAGE WITH COUNTRYSIDE VIEWS - NO FORWARD CHAIN - Charming, Flint Cottage in the desirable village of Compton, set in the West Sussex downland, and within the South Downs National Park. Compton Square is a moment's walk down the road with its village store/café & pub. There is also a local primary school and a park/recreation ground nearby.

This Semi-Detached Cottage with its countryside views to the front and rear, is set in a substantial plot with large gardens to the front, side & rear, and is on mains drainage. The Rear Garden backs onto fields and the Downs, there is a Driveway to the front/side. On the ground floor there are Two Reception Rooms, Kitchen, Utility Room, Cloakroom & a Bathroom, with Three Bedroom and a Family Bathroom upstairs. All three bedrooms have wonderful rural views of the South Downs. This delightful property is now worthy of modernisation and with no forward chain – must be seen, book a viewing now!

- SEMI DETACHED FLINT COTTAGE
- SET IN SOUTH DOWNS
NATIONAL PARK AREA
- THREE BEDROOMS & TWO
BATHROOMS
- RURAL VIEWS FRONT & REAR
- MAINS DRAINAGE
- OFF ROAD PARKING
- LARGE GARDEN TO SIDE & REAR
- NO FORWARD CHAIN

Asking Price
£750,000
Freehold





ACCOMMODATION

Ground Floor:

- Entrance lobby
- Dining Room with fireplace
- Sitting Room with fireplace & door through to kitchen
- Kitchen with door through to Utility
- Utility Room with doors opening to rear garden
- Cloakroom/WC
- Bathroom



First Floor:

- Bedroom 1 }
- Bedroom 2 } All with
- Bedroom 3 } rural views
- Family Bathroom }

Exterior:

- Driveway
- Substantial Plot
- Large Wrap-around Garden to rear/side/ front with lawn, hedging, shrubs & small trees





LOCATION

The village of Compton lies in the heart of the South Downs within the National Park area. It has a village store & café, pub and recreation ground. There is a local primary school.

Compton is a village & parish in the Chichester district of West Sussex. The parish also includes the nearby villages of West Marden & Up Marden. It is located on the B2146 road, to the southeast of Petersfield, Hampshire and northwest of Chichester.

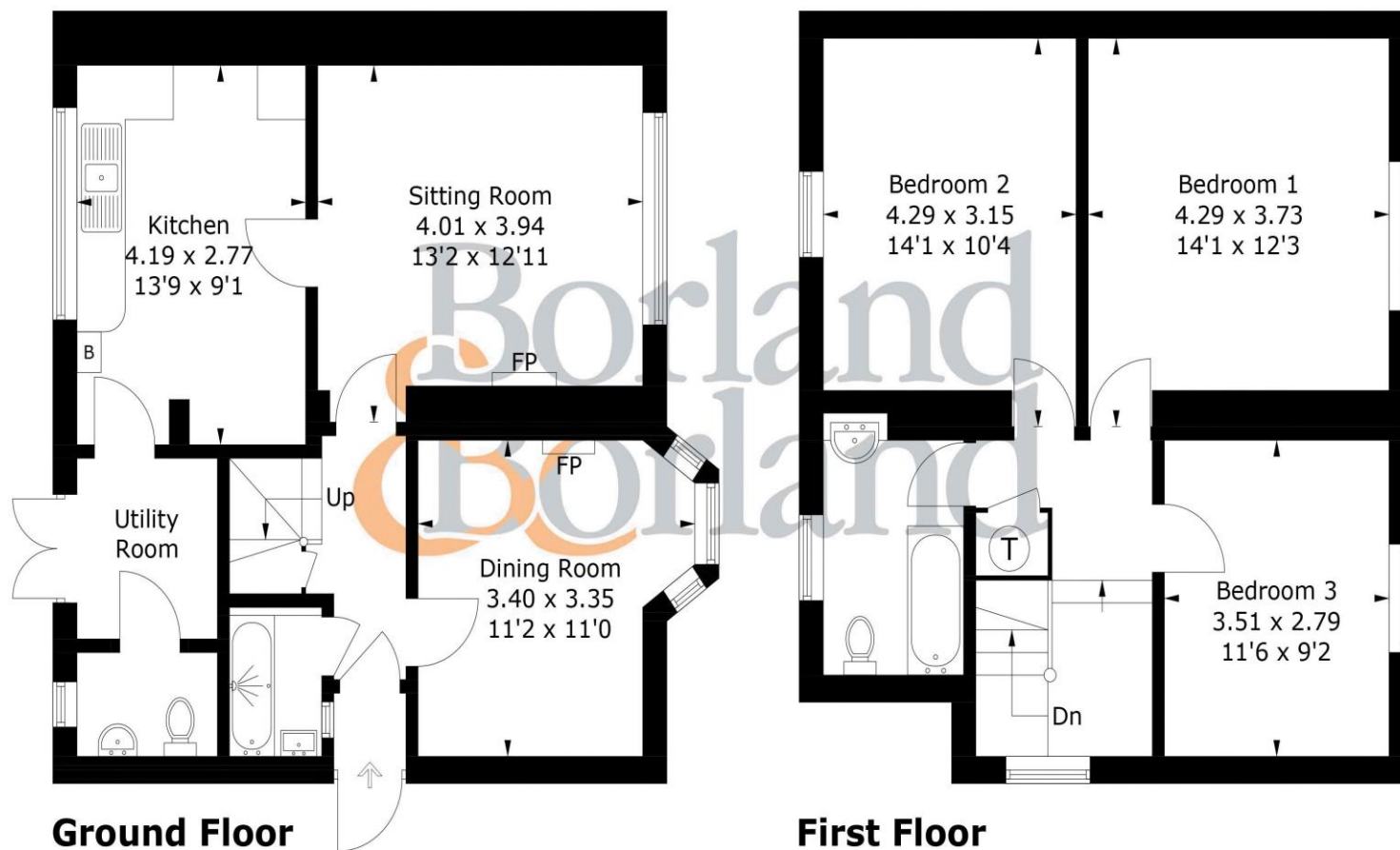
Compton is popular with hikers, walkers, dogs and cyclists - the village store & café. It is also an ancient & picturesque village with several listed buildings dating back to the 15-18th Centuries including the local church and inn.





2, Croft Cottage, PO18 9EX

Approximate Gross Internal Area = 109.5 sq m / 1179 sq ft



Directions
SAT NAV: PO18 9EX

PRODUCED FOR BORLAND & BORLAND ESTATE AGENTS

Whilst every attempt has been made to ensure the accuracy of the floorplan, measurements of doors, windows and rooms are approximate. These plans are for representation purposes only as defined by RICS Code of Measuring Practice and used as such by any prospective purchaser. (ID1185094)

‘IMPORTANT NOTICE Borland & Borland gives notice that: 1. These particulars do not constitute an offer or contract or part thereof. 2. All descriptions, photographs and plans are for guidance only and should not be relied upon as statements or representations of fact. All measurements are approximate and not necessarily to scale. Any prospective purchaser must satisfy themselves of the correctness of the information with the particulars by inspection or otherwise. 3. Borland & Borland does not have any authority to give any representations or warranties whatsoever in relation to this property (including but not limited to planning/building regulations), nor can it enter into any contract on behalf of the Vendor. 4. Borland & Borland does not accept responsibility for any expenses incurred by prospective purchasers in inspecting properties which have been sold, let or withdrawn. 5. If there is anything of particular importance to you, please contact this office and Borland & Borland will try to have the information checked for you.

9a High Street, Emsworth, Hampshire PO10 7AQ

Tel: 01243 377655

property@borlandandborland.co.uk

www.borlandandborland.co.uk

rightmove

naea | propertymark
PROTECTED