



Alton Cottage, North Street, Westbourne PO10 8SN



PRIME LOCATION for this Semi-Detached Family home situated in the much requested West Sussex Village of Westbourne. Offering well planned accommodation over three floors. There is a delightful architect designed extension which provides a stunning open-plan Family Living/Dining Room with bi-fold doors opening onto the garden. Adjacent to which is a fitted kitchen with Aga. In addition, a comfortable Sitting Room with open log fire compliments this room. On the first floor are Two Bedrooms and a Bathroom. On the second floor is the Principal Bedroom with countryside views and an ensuite Shower Room. Outside the property has Off-road Parking to the front, and an attached Garage with electrically operated door with a useful internal storage area for bikes etc The rear garden is fully enclosed with terrace/Pergola area, well stocked flower and shrub beds with steps down to a terrace beside the stream. VIEWING ESSENTIAL

- SEMI-DETACHED BRICK & FLINT COTTAGE
- SPACIOUS EXTENDED LIVING ACCOMMODATION
- THREE BEDROOMS TWO BATHROOMS
- GAS HEATING
- COUNTRYSIDE VIEWS TO REAR
- GARAGE AND OFF ROAD PARKING
- WELL STOCKED MATURE GARDENS WITH RIVERSIDE TERRACE

Asking Price

£685,000

Freehold





ACCOMMODATION

Ground Floor

- Entrance Hall
- Sitting Room
- Kitchen/Dining/Family Room
- Garage



First Floor

- Bedroom Two
- Bedroom Three
- Bathroom

Second Floor

- Bedroom One with Shower En-Suite





LOCATION

Westbourne is a popular downland village location, with access to Local School, Shops including Post Office, Doctors Surgery, Public Houses, Restaurant, Bakery and Garage.

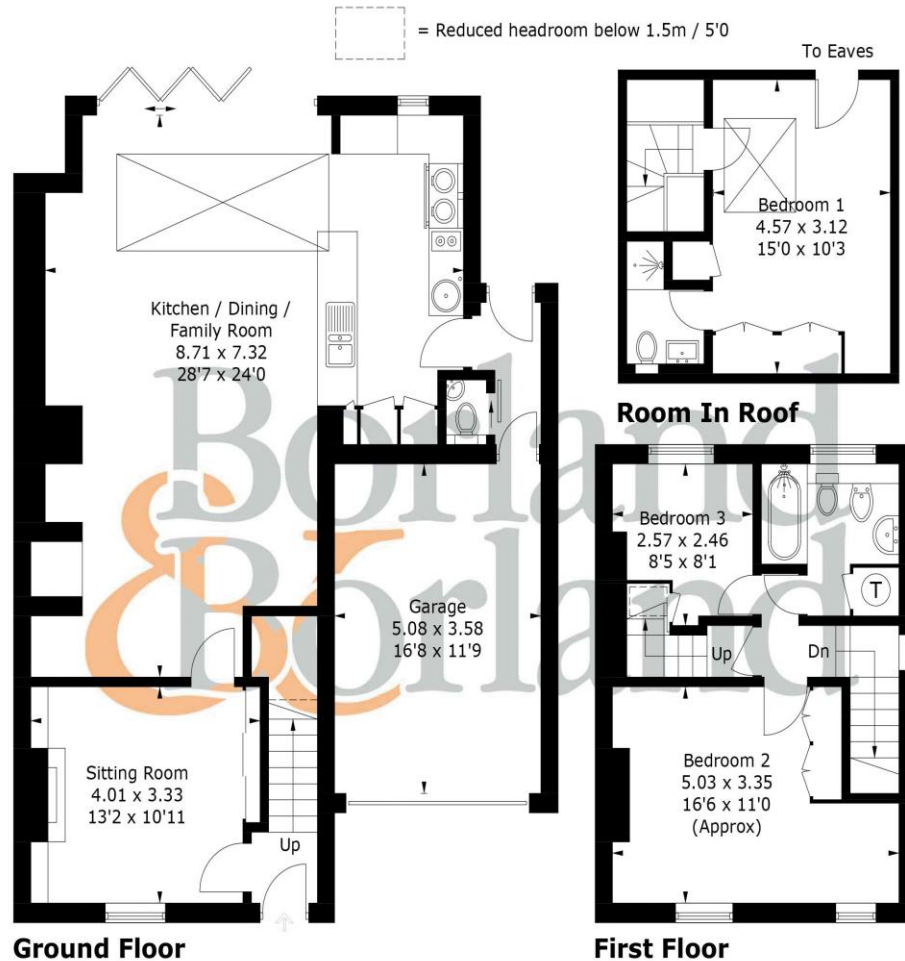
There is easy access to the South Downs National Park, the Cathedral city of Chichester, and Chichester Harbour ANOB at nearby Emsworth. Major road and rail links to London and Brighton are close to hand. ..





Alton Cottage, North Street, PO10 8SP

Approximate Gross Internal Area = 151.4 sq m / 1630 sq ft
(Including Garage)



PRODUCED FOR BORLAND & BORLAND ESTATE AGENTS

Whilst every attempt has been made to ensure the accuracy of the floorplan, measurements of doors, windows and rooms are approximate. These plans are for representation purposes only as defined by RICS Code of Measuring Practice and used as such by any prospective purchaser. (ID1054732)



Directions

9a High Street, Emsworth, Hampshire PO10 7AQ

Tel: 01243 377655

property@borlandandborland.co.uk

www.borlandandborland.co.uk

‘IMPORTANT NOTICE Borland & Borland gives notice that: 1. These particulars do not constitute an offer or contract or part thereof. 2. All descriptions, photographs and plans are for guidance only and should not be relied upon as statements or representations of fact. All measurements are approximate and not necessarily to scale. Any prospective purchaser must satisfy themselves of the correctness of the information with the particulars by inspection or otherwise. 3. Borland & Borland does not have any authority to give any representations or warranties whatsoever in relation to this property (including but not limited to planning/building regulations), nor can it enter into any contract on behalf of the Vendor. 4. Borland & Borland does not accept responsibility for any expenses incurred by prospective purchasers in inspecting properties which have been sold, let or withdrawn. 5. If there is anything of particular importance to you, please contact this office and Borland & Borland will try to have the information checked for you.

rightmove

naea | propertymark
PROTECTED