



1A School Lane,
Emsworth PO10 7ED



OFFERED WITH NO FORWARD CHAIN.... Located in the centre of Emsworth, this spacious Semi-Detached home is just moments from Emsworth Mill Pond. Situated in the heart of Emsworth's Conservation Area, within 100 yards of Emsworth Town centre making this an ideal location for those wishing to benefit from a short walk to local shops, restaurants, pubs and sailing clubs.

The property comprises: Entrance Hall, Sitting/Dining Room, Kitchen, Cloakroom, Utility/Conservatory. The Accommodation upstairs spans the Garage space below and offers Three good-sized Bedrooms and a Family Bathroom. The property benefits from Gas central heating & Double Glazing. There is a single Garage with doors front and rear with paved parking in front and hard standing to the rear, an enclosed low maintenance Garden with pedestrian access to the rear.

- CENTRAL LOCATION
- SEMI-DETACHED
- THREE BEDROOMS
- SITTING/DINING ROOM & CONSERVATORY
- BATHROOM
- GAS HEATING & DOUBLE GLAZING
- OFF ROAD PARKING LEADING TO GARAGE
- NO FORWARD CHAIN

Asking Price
£450,000
Freehold





ACCOMMODATION

Ground floor:

- Entrance Hall
- Sitting/Dining Room
- Kitchen
- Conservatory
- Cloakroom



First Floor:

- Landing with airing and linen cupboard. Hatch to partially boarded loft space
- Large Master Bedroom
- Bedroom 2
- Bedroom 3/ Study
- Family Bathroom

Exterior:

- Off road parking
- Single garage with doors to front and rear with hard standing behind, ideal for those wishing store a small boat through the winter
- Enclosed rear courtyard garden





LOCATION

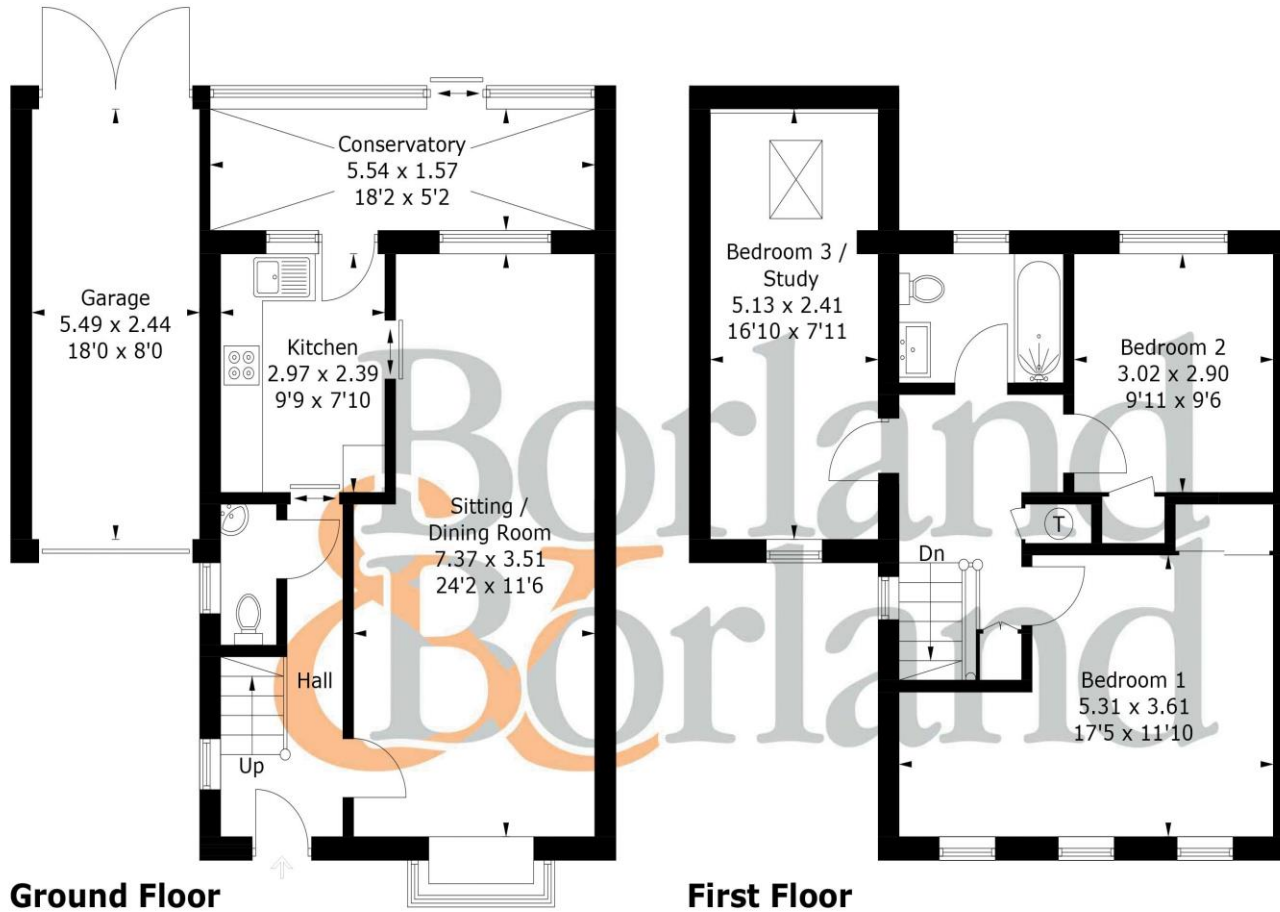
Placed within a few minutes walk of Emsworth high street with its range of shops including convenience store, post office, greengrocers, doctor & dental surgeries and cafes/public houses.

Moments from the harbour foreshore and Emsworth's two sailing clubs for those enjoying waterside walks & pursuits. Excellent road, rail & ferry transport links with easy access to the A27 and A3 for London, Portsmouth and Brighton.



1A, School Lane, PO10 7ED

Approximate Gross Internal Area = 104.4 sq m / 1124 sq ft
Garage = 13.2 sq m / 142 sq ft
Total = 117.6 sq m / 1266 sq ft



Directions

SAT NAV: PO10 7ED

PRODUCED FOR BORLAND & BORLAND ESTATE AGENTS

Whilst every attempt has been made to ensure the accuracy of the floorplan, measurements of doors, windows and rooms are approximate. These plans are for representation purposes only as defined by RICS Code of Measuring Practice and used as such by any prospective purchaser. (ID957767)

‘IMPORTANT NOTICE Borland & Borland gives notice that: 1. These particulars do not constitute an offer or contract or part thereof. 2. All descriptions, photographs and plans are for guidance only and should not be relied upon as statements or representations of fact. All measurements are approximate and not necessarily to scale. Any prospective purchaser must satisfy themselves of the correctness of the information with the particulars by inspection or otherwise. 3. Borland & Borland does not have any authority to give any representations or warranties whatsoever in relation to this property (including but not limited to planning/building regulations), nor can it enter into any contract on behalf of the Vendor. 4. Borland & Borland does not accept responsibility for any expenses incurred by prospective purchasers in inspecting properties which have been sold, let or withdrawn. 5. If there is anything of particular importance to you, please contact this office and Borland & Borland will try to have the information checked for you.

9a High Street, Emsworth, Hampshire PO10 7AQ

Tel: 01243 377655

property@borlandandborland.co.uk

www.borlandandborland.co.uk

rightmove

naea | propertymark
PROTECTED