

Fleetyke Drive, Lowestoft

£380,000

- DESIRABLE ROAD
- ENTRANCE PORCH
- KITCHEN / BREAKFAST ROOM
- DETACHED HOME
- HALLWAY WITH CLOAKROOM / WC
- BATHROOM
- 4 BEDROOMS
- 2 SEPARATE RECEPTIONS
- GARDENS / DRIVEWAY & GARAGE

DETACHED 4 bed HOME has modern style with rustic charm & OPPORTUNITY.

Set on a POPULAR road, just a short distance from schooling, shops & conveniently located for a variety of needs & public transport to the nearby towns & City of Norwich...

PORCH

Handy place to leave your outdoor wear; part brick with uPVC double glazed windows, tiled flooring and double glazed door to...

HALLWAY

Tiled flooring with under floor heating, radiator, power points and stairs up to the first floor. Doors to the lounge and the...

CLOAKROOM / WC

Suite comprises a wash basin and WC. Tiled flooring and uPVC double glazed window.

LOUNGE 4.51m x 4.02m (14'9" x 13'2")

Overlooking the front garden through the large uPVC double glazed window the lounge features tiled flooring with underfloor heating, radiator, TV and power points. Feature fireplace with ambient lighting and opening into...

DINING ROOM 3.35m x 2.89m (10'11" x 9'5")

With French double doors out to the rear garden and internal door to the kitchen; tiled flooring with under floor heating, radiator and power points.

KITCHEN / BREAKFAST ROOM 4.60m x 3.84m (15'1" x 12'7")

High gloss wall and base units with worktop, inset sink / drainer, extractor fan and space / plumbing for your chosen appliances. Tiled flooring, uPVC double glazed window, radiator, TV and power points; part uPVC double glazed door out to the rear garden.

FIRST FLOOR - LANDING

Carpeted stairs up to the first floor and doors to all bedrooms, bathroom and the airing cupboard houses the gas central heating / domestic hot water combination boiler.

BEDROOM 1 3.63m x 3.48m (11'10" x 11'5")

Double bedroom at the front of the home; fitted carpet, uPVC double glazed window, radiator, TV, power points and built-in wardrobe.

BEDROOM 2 3.36m x 2.76m (11'0" x 9'0")

Another double bedroom; laminate flooring, uPVC double glazed window, radiator, power points and built-in wardrobe.

BEDROOM 3 4.04m x 2.84m (13'3" x 9'3")

Double bedroom has laminate flooring, uPVC double glazed window, radiator and power points.

BEDROOM 4 3.92m x 1.75m (12'10" x 5'8")

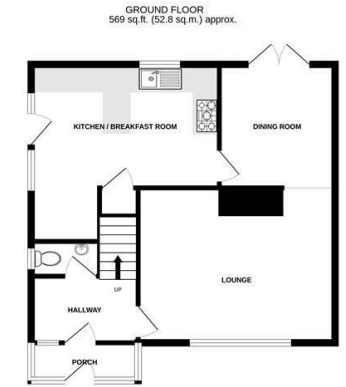
Currently a hair dressing salon, vinyl flooring, uPVC double glazed windows, radiator and power points; water and drainage in situ.

BATHROOM

White suite comprises a vanity unit with inset basin, WC and bath with shower and screen. Vinyl flooring, opaque uPVC double glazed window and radiator.

OUTSIDE 5.44m x 2.72m (17'10" x 8'11")

Attractive low maintenance front provides plenty of off road parking and side driveway. GARAGE 5.46m x 2.74m (17'10" x 8'11") Single brick garage with vehicular up and over door, light, power points, window and door out to the laid to lawn West facing rear garden. Borders filled with an array of plants and shrubs, seating areas enjoy the sun and shade. Outside lighting, water tap and summer house.



FLEETDYKE DRIVE, LOWESTOFT, NR33 9HD
TOTAL FLOOR AREA: 1122 sq.ft. (104.2 sq.m.) approx.
While every attempt has been made to ensure the accuracy of the floorplan contained herein, measurements of doors, windows, rooms and any other items are approximate and no responsibility is taken for any error, omission or mis-statement. This plan is for illustrative purposes only and should be used as such by any prospective purchaser. The services, systems and appliances shown have not been tested and no guarantee as to their operability or efficiency can be given.
Made with Metropax ©2024

FREEHOLD TENURE

EAST SUFFOLK COUNCIL - TAX BAND D

ENERGY PERFORMANCE - RATING C