



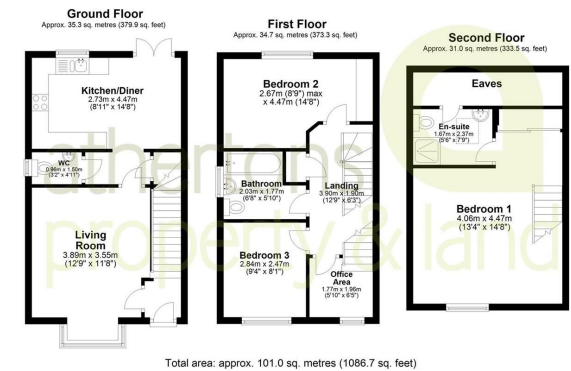
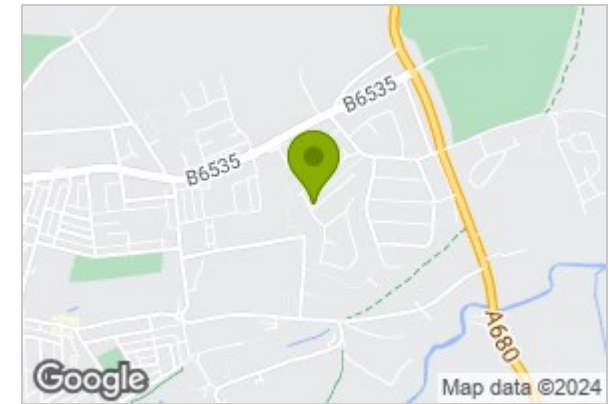
athertons
property & land

6 Haydock Fields Close, Blackburn, BB6 7FP
£235,000



6 Haydock Fields Close, Blackburn, BB6 7FP

Athertons Property & Land are pleased to offer this beautiful three semi-bedroom detached property to the market, situated on the new build estate in Great Harwood, close to local amenities and transport links. This beautiful home has been upgraded and lovingly refurbished over the years boasting a beautifully landscaped, large South West-Facing garden. Briefly comprising of entrance hall, large living room, kitchen/diner, downstairs W.C, two double bedrooms, office area and family bathroom to the first floor and principal bedroom to the second floor with en-suite bathroom, large back garden, double driveway and driveway parking. This property is ready to move into and would be ideal for a family looking to take their next step.



Energy Efficiency Rating		Environmental Impact (CO ₂) Rating	
Current	Potential	Current	Potential
Very energy efficient - lower running costs		Very environmentally friendly - lower CO ₂ emissions	
(92 plus) A	85	(92 plus) A	
(81-91) B		(81-91) B	
(69-80) C		(69-80) C	
(55-68) D		(55-68) D	
(39-54) E		(39-54) E	
(21-38) F		(21-38) F	
(1-20) G		(1-20) G	
Not energy efficient - higher running costs		Not environmentally friendly - higher CO ₂ emissions	
EU Directive 2002/91/EC		EU Directive 2002/91/EC	
England & Wales		England & Wales	

These particulars, whilst believed to be accurate are set out as a general outline only for guidance and do not constitute any part of an offer or contract. Intending purchasers should not rely on them as statements of representation of fact, but must satisfy themselves by inspection or otherwise as to their accuracy. No person in this firm's employment has the authority to make or give any representation or warranty in respect of the property.