



HIGH RIDINGS

Mill Lane | Strensham | Worcestershire | WR8 9LB

HUGHES **HS** SEALEY

Welcome to... HIGH RIDINGS

Welcome to High Ridings, a wonderful five-bedroom family home situated in this highly secluded location, enjoying wonderful open views over the River. Set within grounds of ½ acre, which boast a wealth of maturity and colour, there is also your very own private swimming pool with decked terrace. In addition to the private grounds the home enjoys, the property further benefits from its own river mooring, perfect for those with a boat or those harbouring ambitions of owning one.

Add in that the property enjoys an abundance of space across the two floors, this wonderful family home really can only be fully appreciated by a viewing so this is highly recommended.

Internally the property enjoys a welcoming entrance hall which gives direct access to the cloakroom and games room. The games room enjoys triple

aspect windows so enjoying plenty of natural light and is a wonderful space for children/adults to entertain, particularly as within the room is your own private bar.

Returning to the entrance hall, a set of steps lead to the next level where one will find the spacious living room, dining room and modern kitchen/breakfast room. The living room has a central fireplace, providing a focal point whilst sliding doors, also found in the dining room, lead directly onto the raised terrace, where one can enjoy views over the river and the boats which are moored up.

The kitchen/breakfast room is modern and boasts a wealth of fitted units which sit alongside a host of integrated appliances. A window faces onto the front driveway and the kitchen is completed by granite worktops and

a tiled floor.

On the upper level are five wonderful bedrooms. The principal bedroom is a lovely size and enjoys plenty of natural light from the large picture window to the rear elevation, again ensuring one maximises on the enjoyment of the views the home affords. Furthermore, the room features a wealth of fitted bedroom furniture and an en suite bathroom.

The guest bedroom also has a large picture window to the rear elevation so flooding the room with plenty of light. The room is a good-sized double room and has the benefit of its own dressing room. Of the remaining bedrooms, there are two further double rooms, one located to the front of the house, the other to the rear, a single bedroom and finally a modern, three-piece family shower room.















Explore outside... HIGH RIDINGS

Externally the property features a large driveway, perfect for those with several vehicles, whilst the remainder is predominantly laid to lawn. Within the garden is a raised vegetable garden and garden shed, a wealth of mature plants, trees and shrubs and of course the raised terrace, located directly behind the living and dining room. Completing the property is the swimming pool. A lovely size with steps leading into the pool, which also comes with a roll back cover. The pool sits centrally to a decked seating area, with the pool encased by walling or fencing which allows a high degree of privacy.

LOCATION

Strensham is one of Worcestershire's most sought-after villages and is situated within easy reach of the M5 motorway, which links to both the north and south. The village boasts an active village hall committee, with many varied activities taking place, and is within easy reach of the surrounding towns of Upton-upon-Severn, Tewkesbury and Pershore.

Upton-upon-Severn, located approximately 3 miles away, is a historic town situated on the banks of the River Severn. Here can be found a varied range of shops for everyday needs, a post office, medical centre, library, various churches, primary school and senior school (ages 11 to 18) at Hanley Castle. There is also a marina and numerous clubs and societies for all ages, and the town enjoys many annual music festivals, such as jazz, folk and blues.



It is an active town, yet it retains its charm and character. The surrounding countryside offers delightful walks, in particular the Malvern Hills, and many interesting and historic villages and towns. Slightly further afield are the Cotswolds, with their own appeal. There are rugby, football, and cricket teams in Upton; golf courses at Malvern, Tewkesbury and Worcester; plus further sporting facilities are available in these towns as well as Pershore.

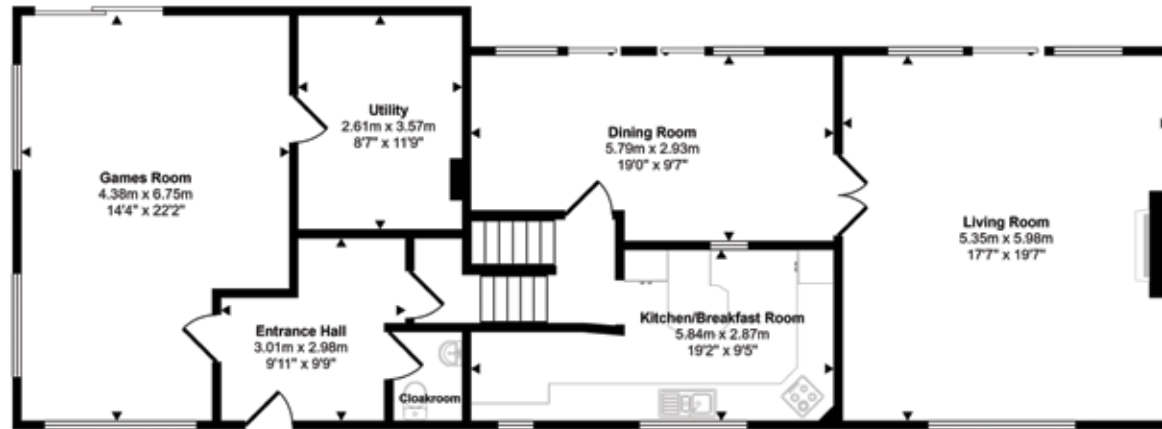
KEY FEATURES

- A wonderful five-bedroom detached family home located in this highly secluded setting
- Sat within mature ground of 1/2 acre, the property further enjoys a riverside mooring
- Within the garden is a large outdoor swimming pool and decked terrace seating area
- Internally the home enjoys two spacious reception rooms: the living room and dining room
- Both reception rooms lead onto a sizeable rear terrace, where one can enjoy the views
- Modern kitchen/breakfast room, entrance hall, games room and utility complete the ground floor
- Large principal bedroom with fitted bedroom furniture and en suite bathroom
- Three further double bedrooms, one single bedroom and family shower room
- Driveway parking for multiple vehicles
- A property that comes with a high recommendation to view



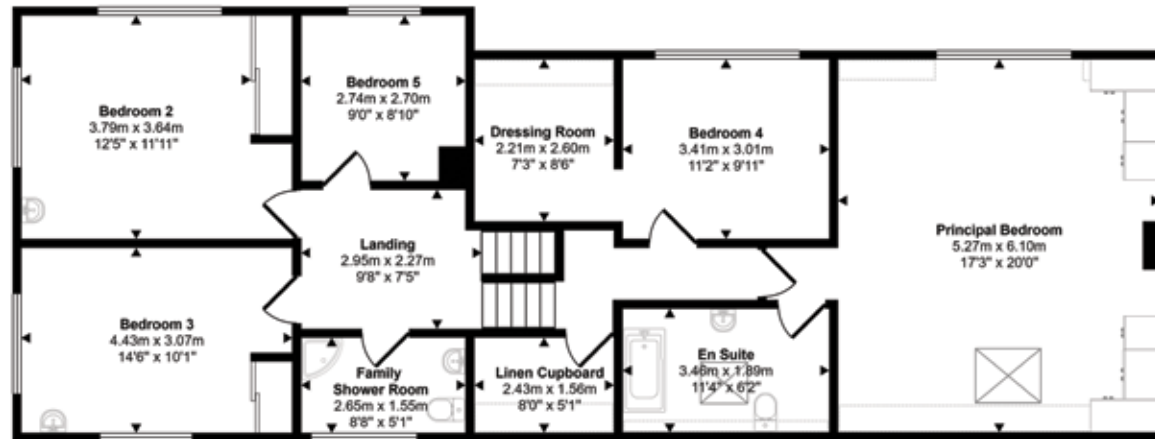


Approx Gross Internal Area
237 sq m / 2549 sq ft



Ground Floor

Approx 117 sq m / 1257 sq ft



First Floor

Approx 120 sq m / 1292 sq ft

 Denotes head height below 1.5m

This floorplan is only for illustrative purposes and is not to scale. Measurements of rooms, doors, windows, and any items are approximate and no responsibility is taken for any error, omission or mis-statement. Icons of items such as bathroom suites are representations only and may not look like the real items. Made with Made Snappy 360.

Agents notes: All measurements are approximate and for general guidance only and whilst every attempt has been made to ensure accuracy, they must not be relied on. The fixtures, fittings and appliances referred to have not been tested and therefore no guarantee can be given that they are in working order. Internal photographs are reproduced for general information and it must not be inferred that an item shown is included with the property. For a free valuation, contact 01242 220080. Copyright © Hughes Sealey. Registered in England and Wales. Company Reg No. 11126899
Registered Office: CDH Estates Ltd, Miramar, Cheltenham Road, Kinsham, Tewkesbury, GL20 8HP.



HUGHES **HS** SEALEY



HUGHES SEALEY

Email: cheltenham@hughessealey.co.uk

Tel: +44 (0)1242 220080

HUGHES **HS** SEALEY