



Onslow Square  
South Kensington, SW7

CHESTERTONS









A well-proportioned two bedroom, two bathroom apartment situated on the fourth floor of a well maintained Art Deco style building on South Kensington's prestigious Onslow Square.

The property offers a functional layout with spacious, clearly defined living areas and excellent storage throughout. A generous west-facing reception room enjoys direct access to a private balcony with views towards the communal gardens, allowing for good natural light throughout the day. Both double bedrooms are well sized and open onto a second private balcony. The separate kitchen is practical in design and provides ample space for day to day use.

There are two bathrooms, and parquet flooring runs through the main areas. In addition to excellent built in storage, the flat benefits from a private storage room located on the lower ground floor. The building is professionally managed and benefits from a lift, care taker and residents can enjoy access to the communal gardens STA

Onslow Square is one of South Kensington's most desirable addresses, positioned moments from the area's shops, restaurants and world class museums, with South Kensington Underground Station (District, Circle and Piccadilly lines) just a short walk away. Access to the communal garden square is available by separate arrangement.

- Two double bedrooms, two bathrooms
- Two balconies and communal gardens access (STA)
- Lift access and caretaker
- Close to shops and transport links

**Asking Price £1,150,000**

Score	Energy rating	Current	Potential
92+	A		
81-91	B		
69-80	C	75 C	75 C
55-68	D		
39-54	E		
21-38	F		
1-20	G		

**Tenure:** Leasehold 96 years remaining

**Service Charge:** £9,248 p.a. approx.

**Ground Rent:** Peppercorn

**Local Authority:** Royal Borough of Kensington & Chelsea

**Council Tax Band:** G

**Chestertons South Kensington Sales**

44-48 Old Brompton Road

London

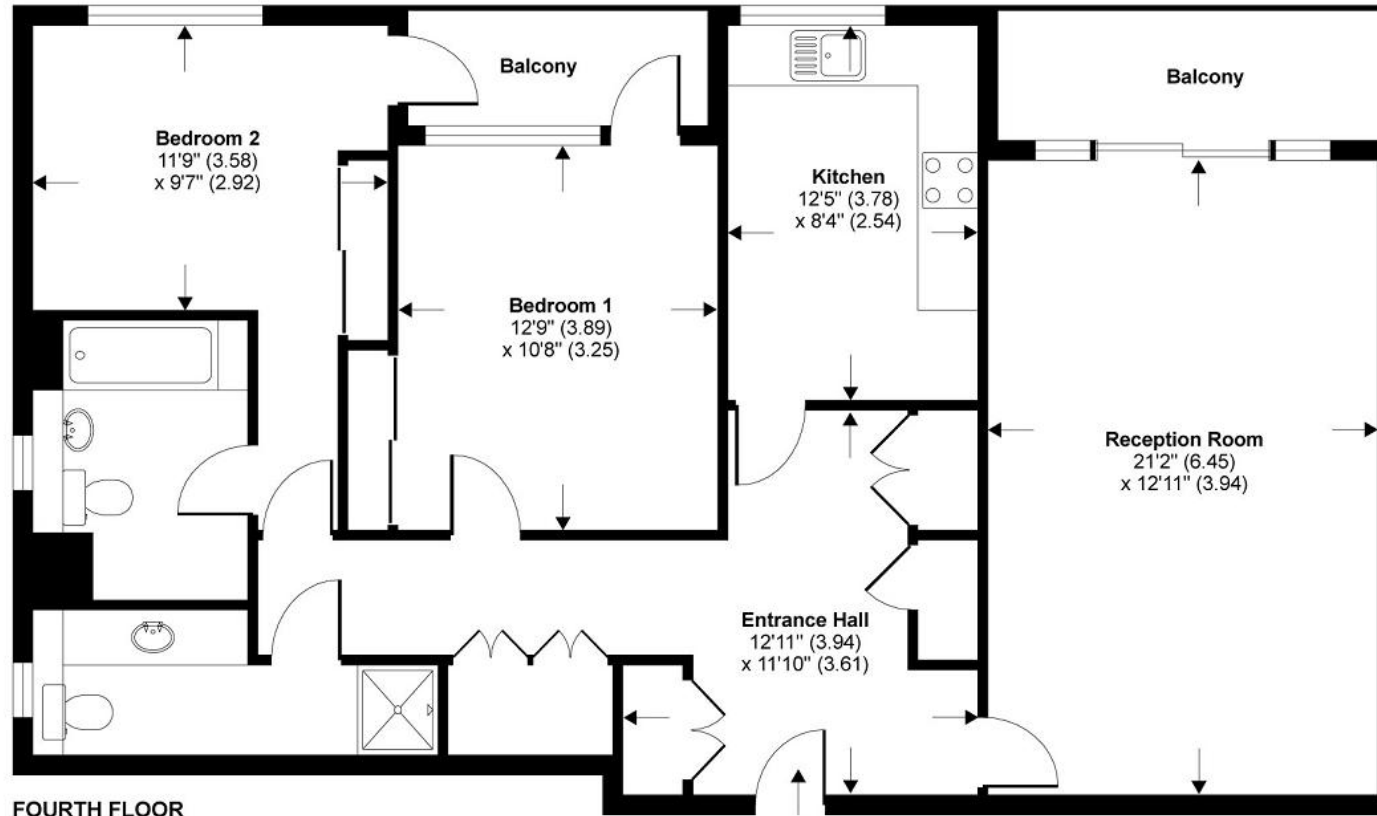
SW7 3DY

southkensington@chestertons.co.uk

020 7589 1234

chestertons.co.uk

# Onslow Square, South Kensington, London, SW7



**TOTAL GROSS INTERNAL FLOOR AREA 1019 SQ FT 94.6 SQ METRES**

Whilst every attempt has been made to ensure the accuracy of the floor plan contained here, measurements of doors, windows and rooms are approximate and no responsibility is taken for any error, omission or misstatement. These plans are for representation purposes only as defined by RICS Code of Measuring Practice and should be used as such by any prospective purchaser. Specifically no guarantee is given on the total square footage of the property if quoted on this plan. Any figure given is for initial guidance only and should not be relied on as a basis of valuation.

Copyright nichecom.co.uk 2012 Produced for Chesterton Humberts REF : 320516

Chesterton UK Services Limited trading as Chestertons for themselves and for the vendor of this property whose agents they are, give notice that (i) these particulars do not constitute any part of an offer or contract, (ii) all statements contained within these particulars are made without responsibility on the part of Chestertons or the vendor, (iii) whilst made in good faith, none of the statements contained within these particulars are to be relied upon as a statement or representation of fact, (iv) any intending purchasers must satisfy themselves by inspection or otherwise as to the correctness of each of the statements contained within these particulars, (v) the vendor does not make or give either Chestertons or any person in their employment any authority to make or give representation or warranty whatsoever in relation to this property. Wide angle lenses may be used. ©Copyright Chestertons | Chesterton UK Services Limited | Registered Office 40 Connaught Street, Hyde Park, London W2 2AB Registered Company Number 05334580.



This paper is  
100% recyclable