



Coleridge Gardens
Chelsea, SW10





An incredible four bedroom penthouse apartment arranged over the fifth and sixth floors of a well maintained building set within the beautiful grounds of the highly regarded King's Chelsea development.

This spacious and well balanced property comprises a vast living room with dining area and a sleek and modern open plan kitchen complete with island. There are three sets of double doors opening onto the top balcony. Below are four exceptionally generous double bedrooms each with built in storage and smart ensuite bathrooms. The master boasts his and hers walk in wardrobes and all rooms have doors opening onto the second wrap around balcony.

This rare and elegant apartment boasts an abundance of natural light, stunning roof top views from every angle and two underground car parking spaces. In addition there 24 hour concierge and security and access to the developments residents only gym, indoor swimming pool, steam room & sauna, tennis court and stunning communal gardens.

Kings Chelsea is positioned between Fulham Road to the North and Kings Road to the South and gives easy access to the areas many shops, restaurants, cafes and transport links including tube, bus and river boat

- A secure gated development set amongst beautiful grounds spanning 7.5 acres
- Four bedrooms
- Two wrap around balconies
- Allocated Secure Underground Car Parking for two cars
- Lift access
- Air-conditioning

Asking Price £5,250,000

Energy Efficiency Rating		
	Current	Potential
Very energy efficient - lower running costs		
90-100 A		
81-89 B		
72-80 C	70	70
63-71 D		
54-62 E		
45-53 F		
35-44 G		
Not energy efficient - higher running costs		
EU Directive 2002/91/EC		

Tenure: Leasehold, 974 years

Service Charge: £35331.93 includes car park and storage unit

Ground Rent: £350

Local Authority: Kensington and Chelsea

Council Tax Band: H

Chestertons South Kensington Sales

44-48 Old Brompton Road

London

SW7 3DY

southkensington@chestertons.co.uk

020 7589 1234

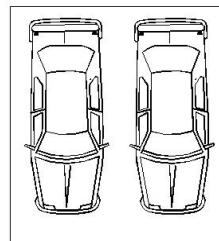
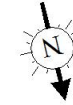
chestertons.co.uk

Benham House, SW10

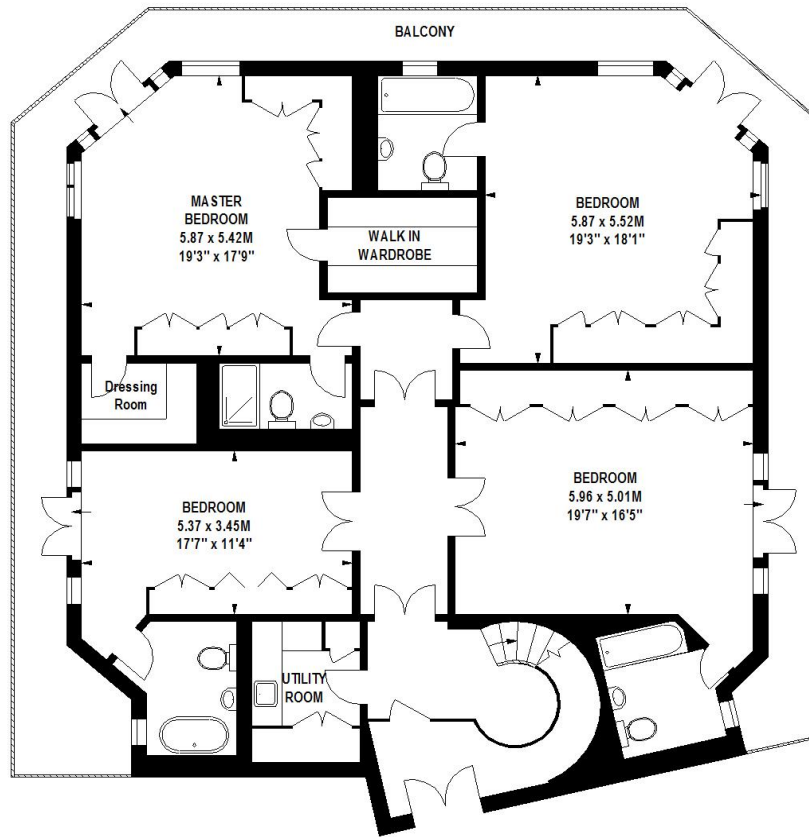
Approximate gross internal area

3429 sq ft / 318.55 sq m

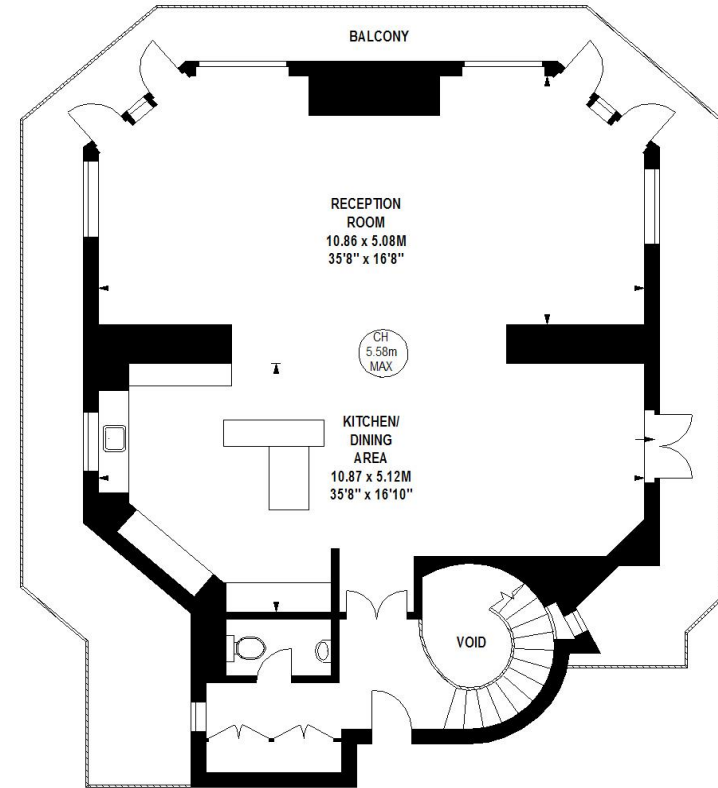
Key :
CH - Ceiling Height



DOUBLE
PARKING
SPACE
4.84 x 4.26M
15'11" x 14'0"



Lower Ground Floor



Fifth Floor

Sixth Floor

The floor plan is not to scale and measurements and areas shown are approximate and therefore should be used for illustrative purposes only. The plan has been prepared in accordance with the RICS code of Measuring Practice and whilst we have confidence in the information produced, it must not be relied on. If there is any aspect of particular importance, you should carry out or commission your own inspection of the property.
Copyright of FeaturePRO.

Chesterton UK Services Limited trading as Chestertons for themselves and for the vendor of this property whose agents they are, give notice that (i) these particulars do not constitute any part of an offer or contract, (ii) all statements contained within these particulars are made without responsibility on the part of Chestertons or the vendor, (iii) whilst made in good faith, none of the statements contained within these particulars are to be relied upon as a statement or representation of fact, (iv) any intending purchasers must satisfy themselves by inspection or otherwise as to the correctness of each of the statements contained within these particulars, (v) the vendor does not make or give either Chestertons or any person in their employment any authority to make or give representation or warranty whatsoever in relation to this property. Wide angle lenses may be used. ©Copyright Chestertons | Chesterton UK Services Limited | Registered Office 40 Connaught Street, Hyde Park, London W2 2AB Registered Company Number 05334580.



This paper is
100% recyclable