



Coleherne Mansions  
228-230 Old Brompton Road, SW5





A very well presented and well proportioned second floor flat (with lift access) set within Coleherne Mansions, a handsome period mansion block on Old Brompton Road.

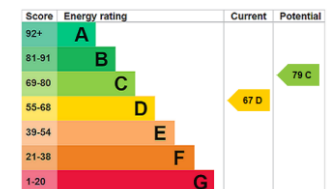
This bright south facing apartment benefits from an abundance of natural light, enhanced by high ceilings, large sash windows, and elegant wooden flooring throughout. The accommodation comprises two double bedrooms with fitted cupboards, a generous reception room, a well appointed kitchen, a stylish en suite shower room to the master bedroom, and a separate family bathroom.

Ideally located for the vibrant amenities of Old Brompton Road and Earls Court Road, the flat is within easy reach of Gloucester Road and Earl's Court underground stations (Piccadilly, Circle, and District Lines), as well as West Brompton overground station.

Coleherne Mansions is a well managed building, offering both period charm and modern convenience in the heart of Earls Court

- Two bedrooms, two bathrooms
- Second floor with lift access
- Generous reception room
- No onward chain

Asking Price £824,000



**Tenure:** Leasehold 948 years  
**Service Charge:** £3629  
**Ground Rent:** £25  
**Local Authority:** Royal borough of Kensington and Chelsea  
**Council Tax Band:** F

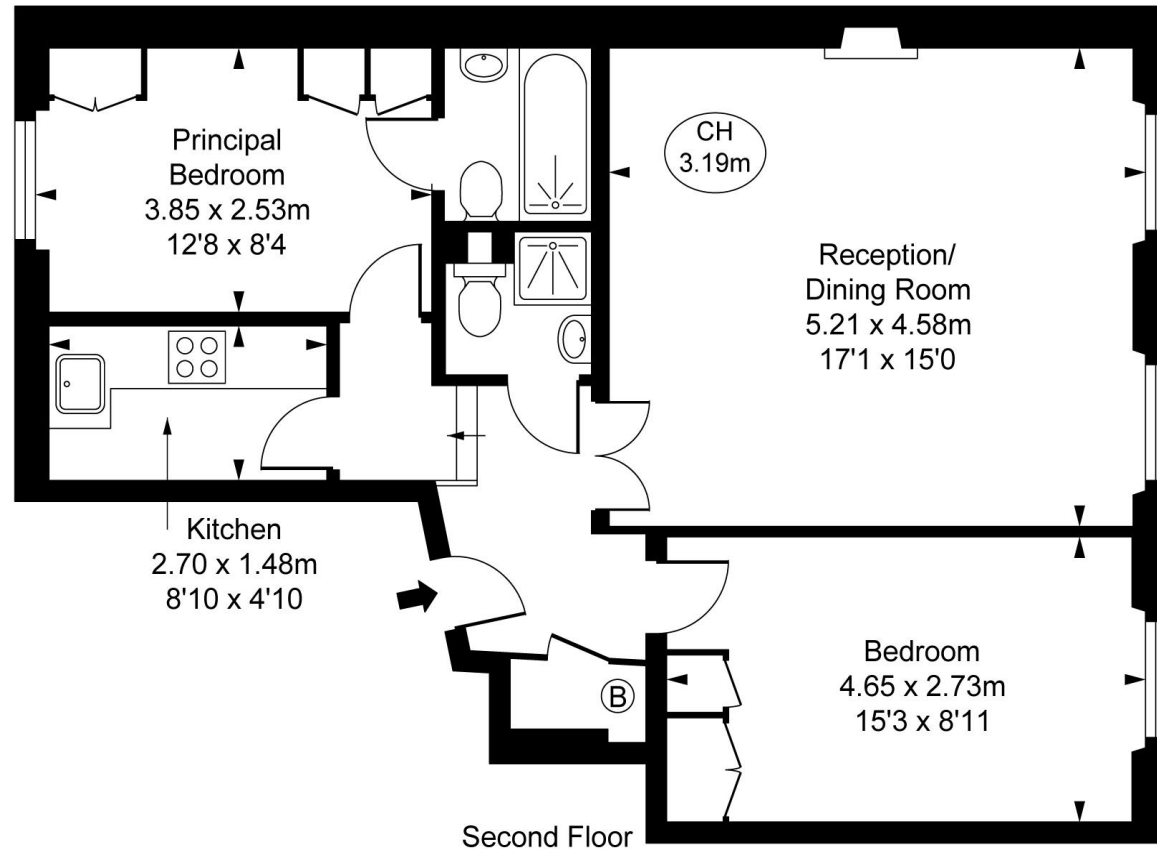
**Chestertons South Kensington Sales**

44-48 Old Brompton Road  
 London  
 SW7 3DY

southkensington@chestertons.co.uk  
 020 7589 1234  
[chestertons.co.uk](http://chestertons.co.uk)

## Coleherne Mansions, SW5

Approximate Gross Internal Area  
**63.66 sq m / 685 sq ft**  
 ( CH = Ceiling Heights )



**FULHAM PERFORMANCE**  
 PRECISION YOU CAN TRUST

This plan is not to a given scale. A detailed layout plan with dimensions is available on request. All quoted measurements and areas are within 1% tolerance and have been prepared in accordance with industry standards as defined in the RICS Code of Measuring Practice © Fulham Performance

Chesterton UK Services Limited trading as Chestertons for themselves and for the vendor of this property whose agents they are, give notice that (i) these particulars do not constitute any part of an offer or contract, (ii) all statements contained within these particulars are made without responsibility on the part of Chestertons or the vendor, (iii) whilst made in good faith, none of the statements contained within these particulars are to be relied upon as a statement or representation of fact, (iv) any intending purchasers must satisfy themselves by inspection or otherwise as to the correctness of each of the statements contained within these particulars, (v) the vendor does not make or give either Chestertons or any person in their employment any authority to make or give representation or warranty whatsoever in relation to this property. Wide angle lenses may be used. ©Copyright Chestertons | Chesterton UK Services Limited | Registered Office 40 Connaught Street, Hyde Park, London W2 2AB Registered Company Number 05334580.



This paper is  
 100% recyclable