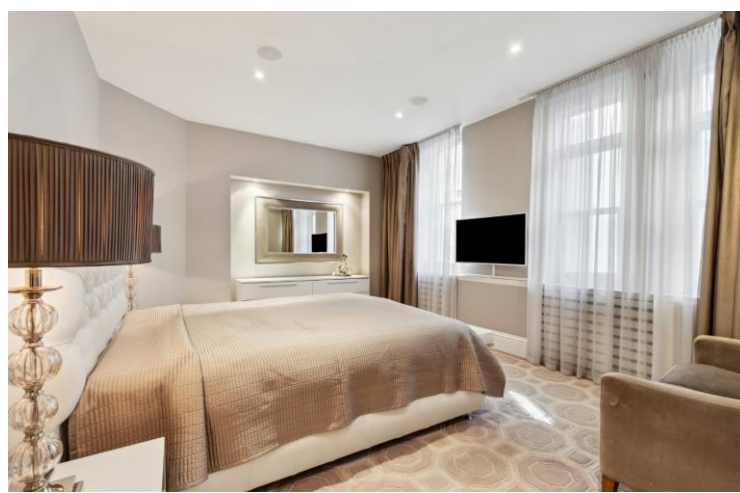




Richmond Mansions
Old Brompton Road, SW5

CHESTERTONS





A beautifully presented grand mansion apartment, offering wonderful proportions, high ceilings, and over 2,000 sqft of internal living space.

Situated on the raised ground floor of an impressive red brick mansion block in the heart of Earls Court, this immaculate property is accessed via a large entrance hall with a clever layout that clearly defines the entering space from the bedroom areas. The reception room is spacious, featuring a large bay window and a fireplace. Adjacent to this is the fourth bedrooms, currently being used as a formal dining room, perfect for entertaining.

The apartment also boasts an eat-in kitchen with Miele appliances, a master bedroom with its own en-suite bathroom and walk-in wardrobe, two further double bedrooms, two bathrooms, and a guest toilet. Underfloor heating is provided in both the kitchen and bathrooms, and there is excellent storage throughout.

Located in a well-run red brick mansion block, the property is ideally situated just moments from Earls Court Station and the numerous shops, bars, and restaurants the area has to offer. Gloucester Road and South Kensington are also within easy reach.

- Refurbished to a high standard
- Four bedrooms, three bathrooms + guest WC
- Underfloor heating in the kitchen and bathrooms
- Close to amenities and green spaces
- Chain free

Asking Price £2,500,000

Energy Efficiency Rating		
Energy efficient - lower running costs	Current	Potential
90-100 A		
81-90 B		
71-80 C		
61-70 D		
51-60 E		
41-50 F		
31-40 G		
Not energy efficient - higher running costs		
England, Scotland & Wales		
EU Directive 2002/91/EC		

Tenure: Share of Freehold 972 years
Service Charge: £8936
Ground Rent: £0
Local Authority: Kensington and Chelsea
Council Tax Band: G

Chestertons South Kensington Sales

44-48 Old Brompton Road
 London
 SW7 3DY

southkensington@chestertons.co.uk
 020 7589 1234
 chestertons.co.uk

Richmond Mansions, SW5

Approximate gross internal area

2038 sq ft / 189.33 sq m



Raised Ground Floor

The floor plan is not to scale and measurements and areas shown are approximate and therefore should be used for illustrative purposes only. The plan has been prepared in accordance with the RICS code of Measuring Practice and whilst we have confidence in the information produced, it must not be relied on. If there is any aspect of particular importance, you should carry out or commission your own inspection of the property.
Copyright of FeaturePRO.

Chesterton UK Services Limited trading as Chestertons for themselves and for the vendor of this property whose agents they are, give notice that (i) these particulars do not constitute any part of an offer or contract, (ii) all statements contained within these particulars are made without responsibility on the part of Chestertons or the vendor, (iii) whilst made in good faith, none of the statements contained within these particulars are to be relied upon as a statement or representation of fact, (iv) any intending purchasers must satisfy themselves by inspection or otherwise as to the correctness of each of the statements contained within these particulars, (v) the vendor does not make or give either Chestertons or any person in their employment any authority to make or give representation or warranty whatsoever in relation to this property. Wide angle lenses may be used. ©Copyright Chestertons | Chesterton UK Services Limited | Registered Office 40 Connaught Street, Hyde Park, London W2 2AB Registered Company Number 05334580.

