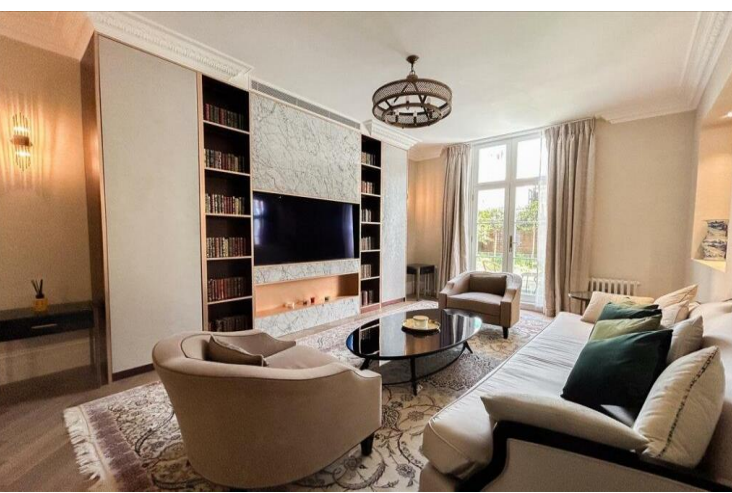




Thurloe Place
London, SW7





A beautifully refurbished five-bedroom home, presented in exceptional condition throughout, offering well-proportioned accommodation throughout.

The property features a spacious double reception room with high ceilings and access to a terrace overlooking the rear garden. The custom-designed eat in kitchen is fitted with luxury appliances, while a separate dining room/family room provides versatile living space, ideal for both entertaining and everyday family life. The five bedrooms include three with en-suite facilities, complemented by a further shower room and two guest WCs.

Set back from the road, the house benefits from private front and rear gardens, along with a terrace off the drawing room, offering excellent outdoor space. A central air conditioning system ensures year-round comfort.

Thurloe Place is superbly located in the heart of South Kensington, surrounded by world-class shopping, dining, and cultural landmarks, including renowned museums. South Kensington and Knightsbridge stations provide excellent transport links, offering easy access to the City, West End, Canary Wharf, and major international transport hubs.

- Five bedrooms
- Excellent entertaining space
- Air conditioning
- Front and rear gardens
- Beautifully refurbished throughout

Asking Price £7,350,000

Energy Efficiency Rating		Current	Potential
Very energy efficient - lower running costs	A		
89-92	A		
81-88	B		
69-80	C		
55-68	D	65	72
49-54	E		
41-48	F		
35-40	G		
Not energy efficient - higher running costs			
EU Directive 2002/91/EC			
England, Scotland & Wales			

Tenure: Freehold
Service Charge: N/A
Ground Rent: N/A
Local Authority: Royal Borough of Kensington & Chelsea
Council Tax Band: H

Chestertons South Kensington Sales

44-48 Old Brompton Road
 London
 SW7 3DY

southkensington@chestertons.co.uk

020 7589 1234

chestertons.co.uk

Thurloe Place

Approx Gross Internal Area
 Lower Ground Floor = 97.6 Sq m / 1051 Sq Ft
 Ground Floor = 70.5 Sq m / 759 Sq Ft
 First Floor = 69.2 Sq m / 745 Sq Ft
 Second Floor = 80.2 Sq m / 863 Sq Ft
 Third Floor = 32.1 Sq m / 345 Sq Ft
 Total = 349.6 Sq m / 3763 Sq Ft



Viewmedia @ 2024
 Viewmedia.co.uk

Whilst every attempt has been made to ensure the accuracy of this floor plan, measurements of doors, windows and rooms are approximate and no responsibility is taken for any error or omission. This illustration is for identification purpose only. Not drawn to scale, unless stated. Dimensions shown are to the nearest 3" and are to the points indicated by the arrowheads.

Chesterton UK Services Limited trading as Chestertons for themselves and for the vendor of this property whose agents they are, give notice that (i) these particulars do not constitute any part of an offer or contract, (ii) all statements contained within these particulars are made without responsibility on the part of Chestertons or the vendor, (iii) whilst made in good faith, none of the statements contained within these particulars are to be relied upon as a statement or representation of fact, (iv) any intending purchasers must satisfy themselves by inspection or otherwise as to the correctness of each of the statements contained within these particulars, (v) the vendor does not make or give either Chestertons or any person in their employment any authority to make or give representation or warranty whatsoever in relation to this property. Wide angle lenses may be used. ©Copyright Chestertons | Chesterton UK Services Limited | Registered Office 40 Connaught Street, Hyde Park, London W2 2AB Registered Company Number 05334580.



This paper is
 100% recyclable