



South Kensington
South Kensington, SW7

CHESTERTONS





A beautiful three bedroom mews house set over two levels with private terrace, balcony and garage.

The ground floor is given over to a wonderful reception room with two large windows, fireplace and ample space for dining and a modern kitchen/ breakfast room with integrated appliances which is flooded with natural light owing to the large skylight. On the first floor are two spacious double bedrooms, each with fitted wardrobes and master with ensuite bathroom and balcony access, an additional third bedroom/ home office and family bathroom. In addition, the house boasts a wonderful private roof terrace, plenty of storage and garage measuring 16'5" x 9'2". The house is ideally positioned at the widest point of this pretty cobbled mews allowing for the best possible natural light in a peaceful setting,

Onslow Mews is West is ideally located in the heart of South Kensington just moments from a number of boutiques, coffee shops and the transport links of South Kensington and Gloucester Road.

*please note the garage is on a separate short lease. That subject to extension has the provision to be extended by 20 years.

Asking Price £2,500,000

| Energy Efficiency Rating | | |
|---|---------|-----------|
| Very energy efficient - lower running costs | Current | Potential |
| 90-100 A | | |
| 81-90 B | | |
| 71-80 C | | 75 |
| 61-70 D | 66 | |
| 51-60 E | | |
| 41-50 F | | |
| 31-40 G | | |
| Not energy efficient - higher running costs | | |
| EU Directive 2002/91/EC | | |

Tenure: Leasehold - 114 years remaining
Service Charge: £1,200 p.a.
Ground Rent: One peppercorn
Local Authority: Kensington and Chelsea
Council Tax Band: H

Chestertons South Kensington Sales

44-48 Old Brompton Road
 London
 SW7 3DY

southkensington@chestertons.co.uk

020 7589 1234

chestertons.co.uk

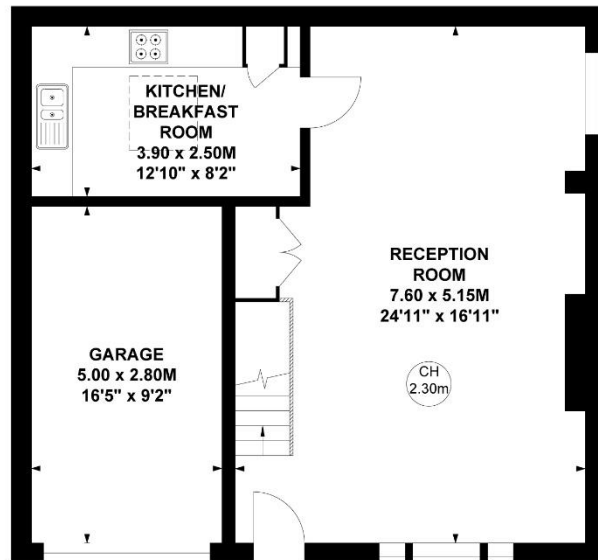
Onslow Mews West South Kensington, SW7

Approximate Total Area
113.5 sq m / 1222 sq ft
(Including Garage)

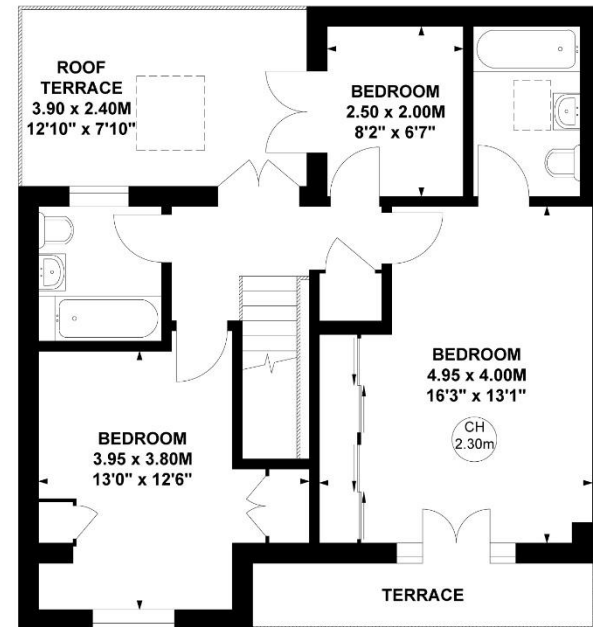
Approximate Gross Internal Area
99.6 sq m / 1072 sq ft



Key :
CH - Ceiling Height



Ground Floor



First Floor

**Not to scale, for guidance only and must not be relied upon as a statement of fact.
All measurements and areas are approximate only**