



Redcliffe Gardens  
Chelsea, SW10

CHESTERTONS





A stunning two double bedroom apartment boasting high ceilings and beautiful period features throughout.

Set on the raised ground floor of an imposing period building the apartment comprises a grand reception room with 3.7m high ceilings, large south-west facing bay window, fireplace and wooden flooring and a sleek and a stylish semi open plan kitchen. To the rear of the property are two double bedrooms (master with ensuite bathroom and walk in wardrobe) which over look well maintained gardens and a smart family bathroom. Access to the balcony can be gained via the second bedroom.

The property is conveniently located between Old Brompton Road and Fulham Road, giving easy access to the many shops, cafes and restaurants of both Earls Court and Chelsea and the public gardens of Redcliffe Square are just moments away. The nearest underground station can be found at Earls Court.

- Grand reception room with 3.7m ceilings
- Two double bedrooms, two bathrooms
- Period features
- Close to shops and restaurants
- Chain free

**Asking Price £1,375,000**

Energy Efficiency Rating		Current	Potential
92-100	A		
81-91	B		
69-80	C	71	77
55-68	D		
39-54	E		
21-38	F		
1-20	G		

Not energy efficient - higher running costs

England, Scotland & Wales EU Directive 2002/91/EC

**Tenure:** Leasehold with a share of freehold - 974 years remaining  
**Service Charge:** £3,000 per annum  
**Ground Rent:** One peppercorn  
**Local Authority:** Royal Borough of Kensington & Chelsea  
**Council Tax Band:** F

*Chestertons South Kensington Sales*

44-48 Old Brompton Road  
London  
SW7 3DY

southkensington@chestertons.co.uk

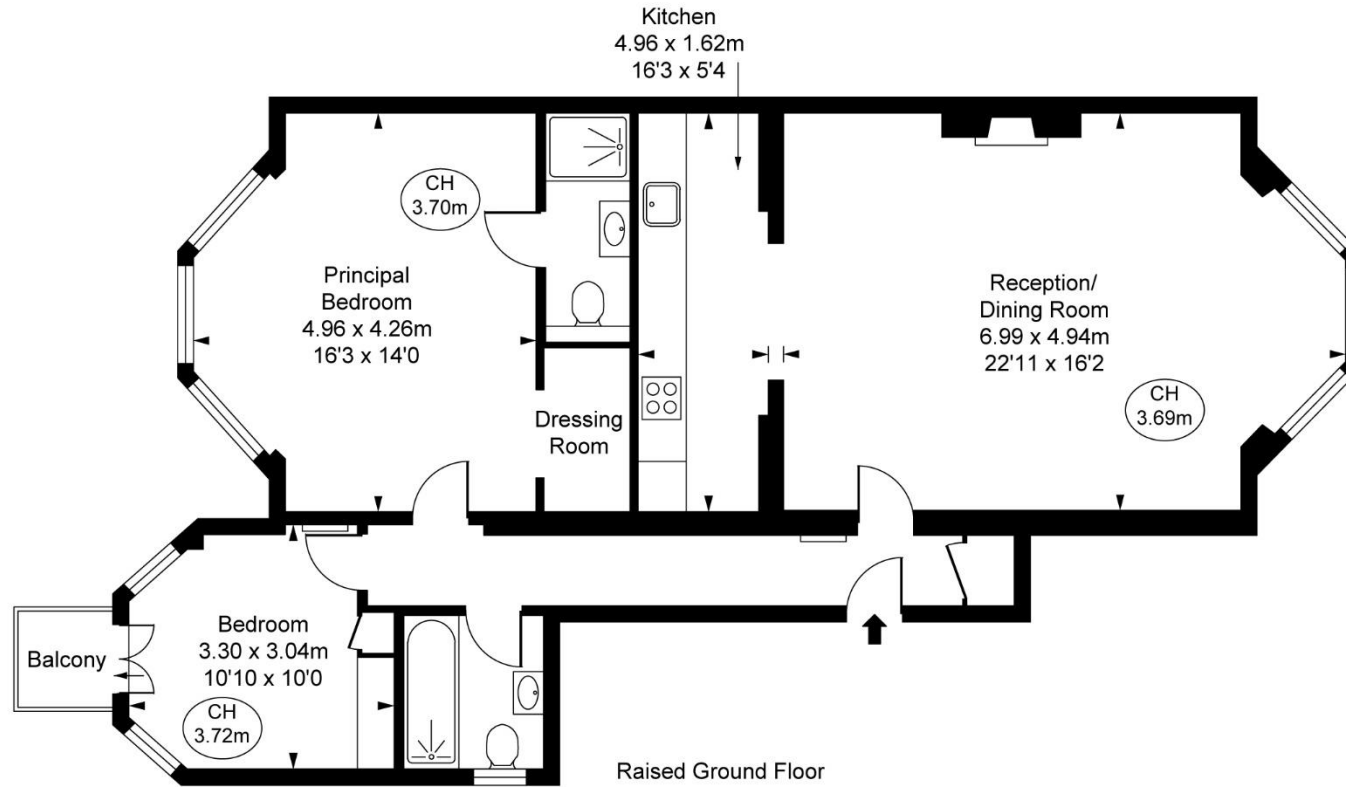
020 7589 1234

chestertons.co.uk

# Redcliffe Gardens, SW10

Approximate Gross Internal Area  
87.29 sq m / 940 sq ft

( CH = Ceiling Heights )



This plan is not to scale. It is for guidance and not for valuation purposes.  
All measurements and areas are approximate only, and have been prepared in accordance with the current edition of the RICS Code of Measuring Practice.  
© Fulham Performance

Chesterton UK Services Limited trading as Chestertons for themselves and for the vendor of this property whose agents they are, give notice that (i) these particulars do not constitute any part of an offer or contract, (ii) all statements contained within these particulars are made without responsibility on the part of Chestertons or the vendor, (iii) whilst made in good faith, none of the statements contained within these particulars are to be relied upon as a statement or representation of fact, (iv) any intending purchasers must satisfy themselves by inspection or otherwise as to the correctness of each of the statements contained within these particulars, (v) the vendor does not make or give either Chestertons or any person in their employment any authority to make or give representation or warranty whatsoever in relation to this property. Wide angle lenses may be used. ©Copyright Chestertons | Chesterton UK Services Limited | Registered Office 40 Connaught Street, Hyde Park, London W2 2AB Registered Company Number 05334580.



This paper is  
100% recyclable